



**May 1994**  
**The Labour Force**  
**New South Wales and**  
**Australian Capital Territory**

**Catalogue No. 6201.1**

At the bottom of the page, there are two thick, black, horizontal bars that taper at their ends, mirroring the design of the bars at the top. They are positioned below the catalogue number.



## CONTENTS

	<i>Page</i>
<b>Summary of findings—</b>	
.. New South Wales	1
.. Australian Capital Territory	4
<b>Graphs</b>	
.. <i>Unemployment rate, New South Wales and Australia, May 1994</i>	1
.. <i>Monthly change in number of persons employed, New South Wales and Australia, May 1982 – May 1994</i>	1
.. <i>Unemployment rate, New South Wales and Australia, May 1982 – May 1994</i>	1
.. <i>Unemployment rate by age, Regions of New South Wales, May 1994</i>	2
.. <i>Average duration of unemployment, New South Wales, May 1992 – May 1994</i>	3
.. <i>Employed persons, Australian Capital Territory, May 1982 – May 1994</i>	4
.. <i>Unemployment rate, Australian Capital Territory and Australia, May 1982 – May 1994</i>	4
.. <i>Unemployment rate by age, Australian Capital Territory, May 1992 – May 1994</i>	4
.. <i>Average duration of unemployment, Australian Capital Territory, May 1992 – May 1994</i>	5

### NEW SOUTH WALES

#### LABOUR FORCE STATUS

<i>Table</i>		
	<b>Labour force status, New South Wales—</b>	
1.	Original series	7
2.	Seasonally adjusted and trend series	8
3.	Age	10
4.	Aged 15–24 (single years) by full-time educational attendance	11
5.	Family status	12

#### *Graphs*

	<b><i>Trend series, New South Wales, May 1982 – May 1994—</i></b>	
..	<i>Employed males</i>	9
..	<i>Employed females</i>	9
..	<i>Unemployed males</i>	9
..	<i>Unemployed females</i>	9
..	<i>Male unemployment rate</i>	9
..	<i>Female unemployment rate</i>	9
..	<i>Male participation rate</i>	9
..	<i>Female participation rate</i>	9
	<b><i>Persons aged 15–19 in the labour force, New South Wales: Full-time attendance at school or a tertiary educational institution, May 1992 – May 1994—</i></b>	
..	<i>Employed</i>	10
..	<i>Unemployed</i>	10

#### EMPLOYED PERSONS

<i>Table</i>		
	<b>Employed persons, New South Wales—</b>	
6.	Status of worker	12
7.	Age	13
8.	Industry	14
9.	Occupation	16

#### *Graphs*

	<b><i>Annual change in employment, New South Wales, May 1993 – May 1994—</i></b>	
..	<i>Age</i>	13
..	<i>Industry division</i>	15
..	<i>Occupation group</i>	17

CONTENTS—continued

		<i>Page</i>
	<b>UNEMPLOYED PERSONS</b>	
<i>Table</i>	<b>Unemployed persons, New South Wales—</b>	
10.	Age	18
11.	Unemployment rate by age	18
12.	Industry and occupation of last full-time job	19
13.	Duration of unemployment	20
14.	Unemployment rate by birthplace and period of arrival	20
15.	Duration of unemployment by age	21
<i>Graphs</i>		
..	<i>Unemployment rate by age, New South Wales, May 1992 – May 1994</i>	19
..	<i>Unemployment rate by period of arrival of overseas born, New South Wales, May 1994</i>	20
	<b>REGIONAL DATA</b>	
<i>Table</i>	<b>Labour force status—</b>	
16.	Sydney Major Statistical Region	22
17.	Balance of New South Wales Major Statistical Region	23
18.	Regions of New South Wales	24
	<b>Employed persons—</b>	
19.	Age, regions of New South Wales	32
20.	Industry and occupation, Sydney Major Statistical Region and Balance of New South Wales Major Statistical Region	33
	<b>Unemployed persons—</b>	
21.	Unemployment rate by age, regions of New South Wales	34
	<b>AUSTRALIAN CAPITAL TERRITORY</b>	
	<b>LABOUR FORCE STATUS</b>	
<i>Table</i>	<b>Labour force status, Australian Capital Territory—</b>	
22.	Original series	35
23.	Trend series	36
24.	Age	38
25.	Non-institutionalised persons: Birthplace and year of arrival	38
<i>Graphs</i>		
..	<i>Trend series, Australian Capital Territory, May 1982 – May 1994—</i>	
..	<i>Employed males</i>	37
..	<i>Employed females</i>	37
..	<i>Unemployed males</i>	37
..	<i>Unemployed females</i>	37
..	<i>Male unemployment rate</i>	37
..	<i>Female unemployment rate</i>	37
..	<i>Male participation rate</i>	37
..	<i>Female participation rate</i>	37

**EMBARGOED UNTIL 11.30 A.M. 28 JULY 1994**

**THE LABOUR FORCE  
NEW SOUTH WALES AND  
AUSTRALIAN CAPITAL TERRITORY  
MAY 1994**

**GREG BRAY**  
Deputy Commonwealth Statistician

© Commonwealth of Australia 1994

CONTENTS—*continued*

		<i>Page</i>
<b>EMPLOYED PERSONS</b>		
<i>Table</i>		
26.	Employed persons, industry and occupation, Australian Capital Territory	39
<i>Graphs</i>		
	<i>Annual change in employment, Australian Capital Territory, May 1993 – May 1994—</i>	
..	<i>Industry</i>	39
..	<i>Occupation</i>	39
<b>UNEMPLOYED PERSONS</b>		
<i>Table</i>		
27.	Long-term unemployment, Australian Capital Territory	40
<i>Graph</i>		
..	<i>Long-term unemployed as a proportion of total unemployed, Australian Capital Territory, May 1992 – May 1994</i>	40
..	<b>Labour force supplementary topics</b>	<b>41</b>
..	<b>Explanatory notes</b>	<b>42</b>
..	<b>Technical note on data reliability</b>	<b>45</b>
..	<b>Appendix</b>	
..	<b>Regions of New South Wales and their statistical local areas</b>	<b>50</b>
<i>Maps</i>		
..	<i>Regions of New South Wales</i>	52
..	<i>Regions of Sydney Major Statistical Region</i>	52

---

**INQUIRIES**

- *for further information about statistics in this publication and the availability of related unpublished statistics, contact the following—*  
     ABS NSW office — Elizabeth Scrivener on Sydney (02) 268 4212  
     ABS ACT office — Bill Syms on Canberra (06) 207 0285
- *for information about other ABS statistics and services please refer to the back cover of this publication.*

---





## SUMMARY OF FINDINGS New South Wales

### Seasonally adjusted estimates

In May 1994 there were 2,630,400 people **employed** in NSW. An increase has been recorded in most months since May 1993 resulting in an increase of 84,800 people in the 12 months to May 1994.

The overall **unemployment rate** was 9.7%, with a rate of 10.6% for males and 8.5% for females. These rates are the lowest recorded during the last year. When compared with the Australian figures, the NSW rates for persons and females were both slightly lower, while the rate for males was higher.

The number of **unemployed** people was estimated at 283,000 in May 1994. This was slightly lower than in April 1994 and significantly lower than in May 1993 when the number was 302,600. Males represented 62.9% of the unemployed, compared with 63.5% in May 1993.

The **participation rate** stood at 61.5% overall, with a rate of 72.1% for males and 51.3% for females.

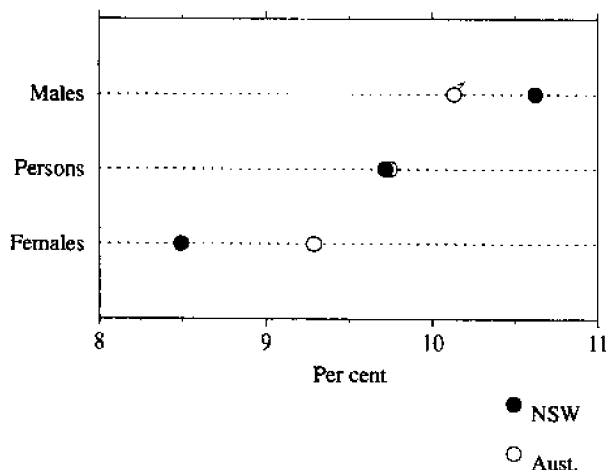
In May 1994 the size of the **labour force** was estimated at 2,913,400 people. This was an increase of 65,200 since May 1993.

LABOUR FORCE, NSW  
(Seasonally adjusted)

	Labour force		Unemp- loyment rate (per cent)	Partici- pation rate (per cent)
	Employed ('000)	Unemp- loyed ('000)		
1993—				
May	2,545.6	302.6	10.6	60.7
1994—				
March	2,628.4	293.9	10.1	61.8
April	2,624.4	291.1	10.0	61.6
May	2,630.4	283.0	9.7	61.5
Annual change (a)	3.3%	-6.5%	-0.9	0.8

(a) For rates, the annual change is expressed as the difference in percentage points.

UNEMPLOYMENT RATE, MAY 1994



### Trend series estimates

The number of **employed** people in NSW was 2,630,300 in May 1994. The trend estimate of employed people has increased each month since March 1993.

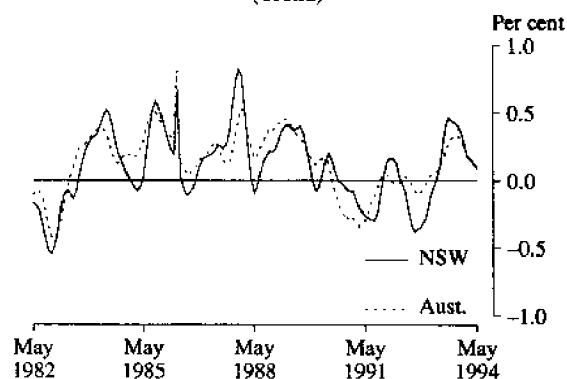
The overall trend **unemployment rate** was 9.8%, as compared to 10.8% in May 1993. A downward movement has occurred each month since November 1993 following a period of five months when the rate remained steady.

The trend estimate of **unemployed** people in May 1994 was 286,200. There has been a decrease in each month since November 1993 and a total decrease of 20,600 in the number of unemployed people since May 1993.

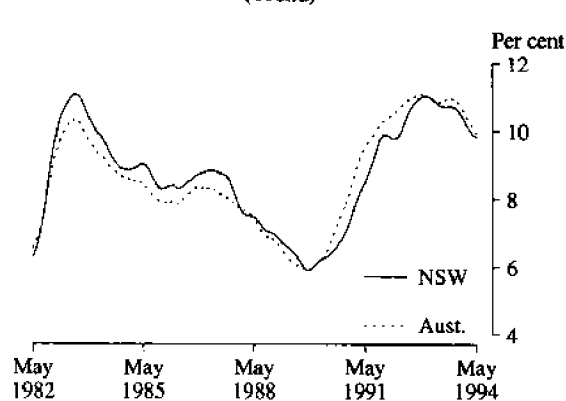
The trend series **participation rate** was 61.6% in May 1994 and has been at or slightly above this rate for the last seven months. In the 12 months since May 1993 the overall rate has risen from 60.7%. The rate for males has risen 0.3 percentage points, while the rate for females has risen 1.5 percentage points.

In May 1994 the trend estimate of the **labour force** stood at 2,916,500. This was a significant increase on the estimate of 2,846,200 for May 1993.

MONTHLY CHANGE IN NUMBER OF PERSONS EMPLOYED  
(Trend)



UNEMPLOYMENT RATE  
(Trend)



Source: The Labour Force, Australia (6203.0)

## Regions of NSW

*Note: Estimates for regions of the state are subject to high sampling variability. Caution should be used when analysing these estimates and their movements. See Technical Note, page 45.*

### Sydney

In May 1994 the estimate of the number of people employed in the Sydney Major Statistical Region (MSR) was 1,752,800. This was an increase of 84,900 in the 12 months since May 1993. During this period, the number of part-time workers has increased from 21.1% to 22.5% of employed people.

In May 1994 the unemployment rate was 8.5%, a decrease from 9.6% in May 1993. The rate for people aged 15–24 years was 14.2%.

The unemployment rates within Sydney (MSR) varied between 18.9% in Fairfield–Liverpool Statistical Region (SR) and 4.1% in Northern Beaches (SR).

The participation rate for Sydney (MSR) stood at 64.1% compared with 62.3% in May 1993. The rate for males was 73.8% and for females 54.8%. Gosford–Wyong (SR) recorded the lowest participation rate of 58.0% while the highest rate was 68.4% in Northern Beaches (SR).

### Balance of NSW

In May 1994 the number of employed people in this area of NSW was 892,600 and was almost the same as the estimate for May 1993. In this 12 month period, the proportion of part-time workers has decreased from 25.1% to 24.3%.

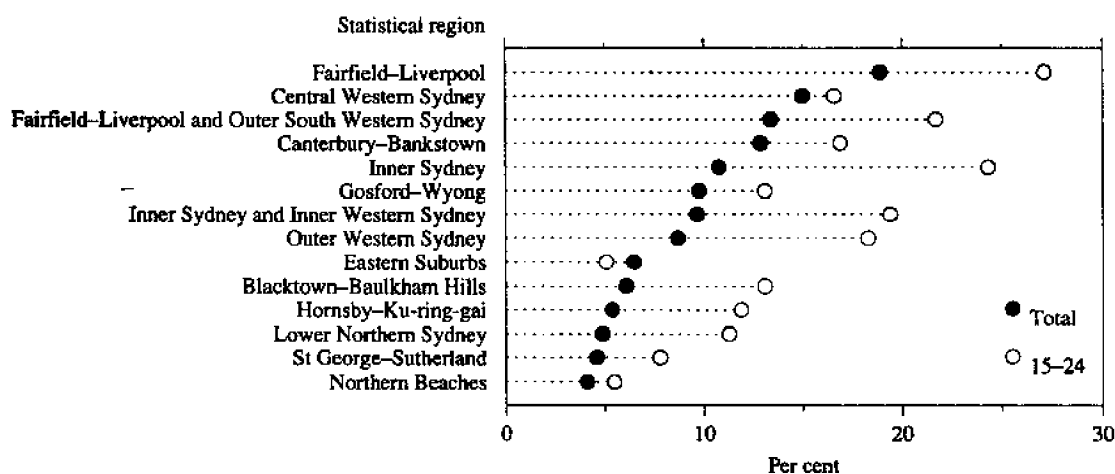
In May 1994 the unemployment rate was 11.2%, a decrease of 0.5 percentage points since May 1993. The rate for people aged 15–24 years was 20.8%.

Overall the unemployment rate varied from 6.8% in Northern, Far West–North Western and Central West (SRs) to 16.4% in Richmond–Tweed and Mid-North Coast (SRs).

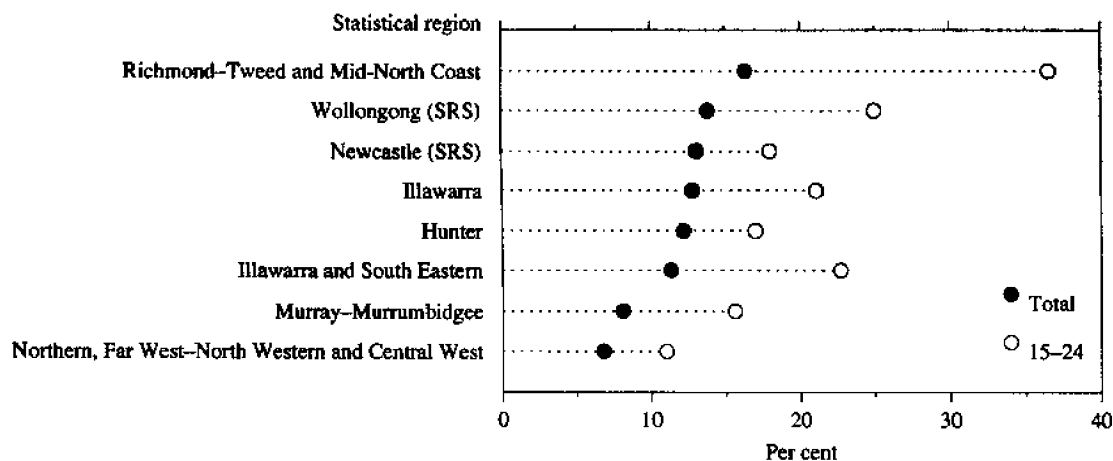
The participation rate for the Balance of NSW (MSR) was 57.4%. Unlike Sydney (MSR), the rate has decreased in the 12 months since May 1993, when it stood at 58.3%. The rate for males was 69.1% and for females 46.0%.

## UNEMPLOYMENT RATE BY AGE, REGIONS OF NSW, MAY 1994

### Sydney (MSR)



### Balance of NSW (MSR)



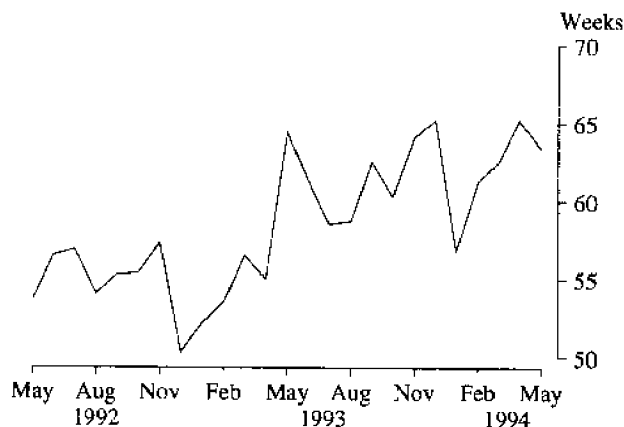
### Duration of unemployment

In May 1994 the **long term unemployed** (52 weeks and over) represented 38.7% of the total unemployed. This compares with 41.5% in May 1993.

The average duration of unemployment was 63.4 weeks, a decrease from the May 1993 average of 64.3 weeks.

Average duration of unemployment increased with age reaching an average of 104.2 weeks for people aged 45 years and over.

AVERAGE DURATION OF UNEMPLOYMENT, NSW



### Age

Between May 1993 and May 1994, an increase in the estimated number of people employed was recorded by all age groups except 35–44 year olds.

Part-time workers represented an estimated 23.1% of all employed people in May 1994, but this proportion varied between the age groups. The highest levels were among those aged 15–19 years with 60.8% and those aged 65 years and over with 42.7%. The lowest level was 17.5% of employed people aged 25–34 years.

Estimated unemployment rates have decreased for all age groups except those aged 15–19 years, in the 12 months since May 1993. Although the current rate for 15–19 year olds (21.4%) is higher than in May 1993 there has been a downward movement in recent months. Thirty per cent of this group were looking for part-time work.

Participation rates also vary with age. The highest levels (between 78% and 82%) occur among the four age groups between 20 and 54 years of age. The lowest level was among those 65 years and over. Among the 45.2% of 15–19 year olds not in the labour force, just over 9 out of 10 were attending school or a tertiary institution full-time.

### Industry and occupation

In the 12 months to May 1994 movements in the estimated level of employment within industry divisions varied between a decrease of 19.4% in *Mining* to an increase of 13.0% in *Communication*.

In actual numbers the largest movement in the number of people employed was an estimated increase of 54,400 people employed in *Community services*. This was followed by *Finance, property and business services* with an increase of 23,700 (7.6%). The largest decrease was 5,600 people in *Mining*.

Wholesale and retail trade continue to employ the largest number of people in both Sydney (MSR) and Balance of NSW (MSR) (21.8% and 20.8% respectively).

Between May 1993 and May 1994 most occupation groups recorded a rise in the estimated number of people employed. The exceptions were *Managers and administrators* and *Tradespersons*. Among *Tradespersons* there was a decrease of 22,000 people (5.9%). The largest increase was an estimated 26,500 people employed as *Labourers and related workers*.

In Sydney (MSR) *Tradespersons* was the only occupation group to record a decrease. However, in the Balance of NSW (MSR) the movements were evenly divided, with four occupation groups recording rises and four groups recording falls.

## SUMMARY OF FINDINGS

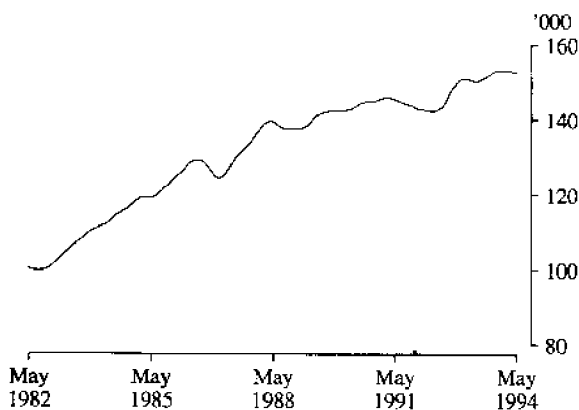
### Australian Capital Territory

Note: Seasonally adjusted estimates are not available for the ACT.

#### Trend series

The trend estimate of the number of **employed** people in ACT in May 1994 was 152,900. This was an increase of 2,600 people since May 1993. During this 12 month period the estimate rose each month to reach a peak of 153,200 in both December and January, but has since gradually declined.

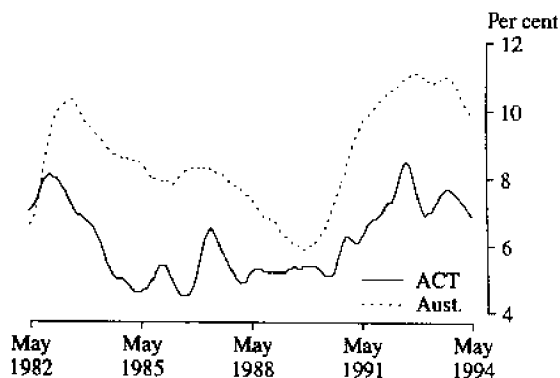
EMPLOYED PERSONS, ACT  
(Trend)



The trend **unemployment rate** was 6.9% in May 1994. The rates for males and females were similar at 6.9% and 6.8% respectively. The overall unemployment rate rose between May 1993, when it stood at 7.2%, and October 1993, after which it commenced a downward movement.

In May 1994 the trend estimate of the number of **unemployed** people in the ACT was 11,300, slightly less than in May 1993. In the last 12 months the number of unemployed people reached the highest level in October 1993.

UNEMPLOYMENT RATE  
(Trend)



The **participation rate** in May 1994 was 72.1% and was 0.3 percentage points lower than in May 1993. The rate was 80.3% for males and 64.1% for females.

The **ACT labour force** was estimated at 164,100 and is higher than May 1993 when it was estimated at 161,900 people.

#### Age

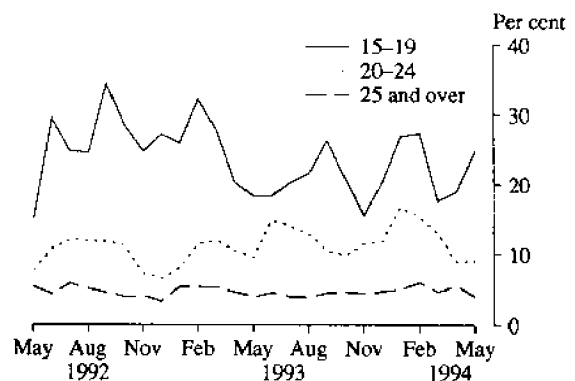
In May 1994 the unemployment rate in the ACT decreased with age, with the highest rate (24.8%) among people aged 15–19 years. The rate was 9.1% for people aged 20–24 years and 4.0% for those aged 25 years and over. These rates were all lower than those recorded in February 1993.

The proportion of employed people who work full-time increased with age. In May 1994, 27.1% of 15–19 year olds work full-time compared with 67.8% of 20–24 year olds and 83.2% of people aged 25 and over. This pattern is reflected in average weekly hours worked of 18.9, 31.0 and 37.6 respectively.

Among unemployed people looking for full-time work the proportions vary from 42.9% of 15–19 year olds to 72.5% of people 25 years and over in May 1994.

The highest participation rate was 84.0% for those aged 20–24 years, followed by 72.6% for those aged 25 and over 58.1% for 15–19 year olds. Amongst 15–19 year olds who were not in the labour force 73.5% are attending school.

UNEMPLOYMENT RATE BY AGE, ACT



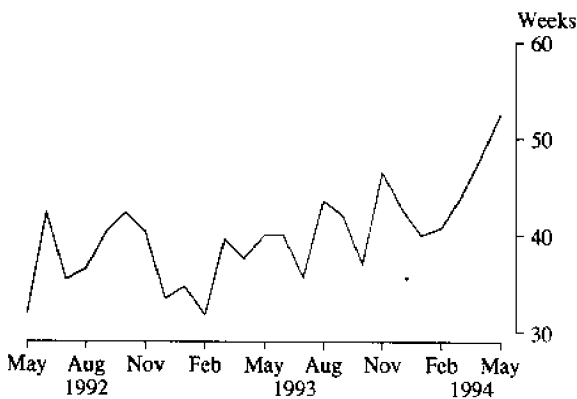
### Duration of unemployment

In May 1994 average duration of unemployment in the ACT was 52.6 weeks. The average varies between 23.9 weeks for those aged 15–19 years and 78.0 weeks for those aged 25 years and over.

The long term unemployed (52 weeks and over) represented 31.9% of total unemployment. This was only slightly higher than in May 1993 when the proportion was 31.1%. Throughout the 12 months the proportion has fluctuated but has remained below these figures.

Among males the long term unemployed were 41.1% of the total, while for females the estimate was 20.9%. The figure for males was higher than the estimate in May 1993, but for females it was lower.

AVERAGE DURATION OF UNEMPLOYMENT, ACT



### Industry and occupation

The industry groups *Public administration and defence* and *Community services* are the largest employers in the ACT, accounting for nearly half of all employed people. In the 12 months between May 1993 and May 1994 there was very little change in the number of people employed in either group. However, the next largest group, *Wholesale and retail trade*, which accounted for 17.3% of employment in May 1994, increase by nearly 2,000 people (7.7%).

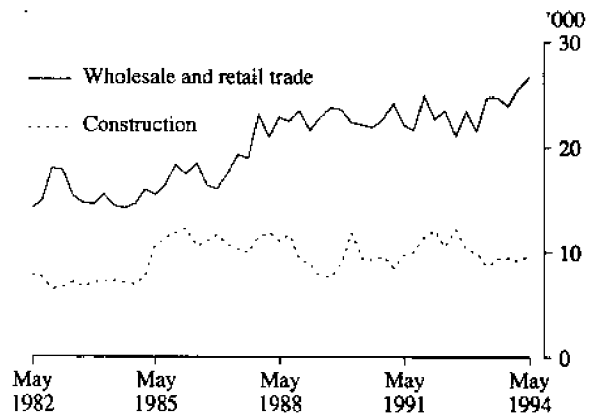
In percentage terms the largest increase was recorded by *Construction* with a rise of 14.0% since May 1993.

The largest occupation group is *Clerks* with 24.5% of employed people. This was an increase of 4,300 since May 1993 when they represented 21.9%.

Para-professionals recorded an increase of just over 30%.

Two occupation groups recorded a decline in the numbers employed between May 1993 and May 1994. *Professionals* decreased by 5,200 (14.9%) and *Managers and administrators* by 1,800 (9.2%). This latter group recorded an increase in the number of females, but a decline in the number of males.

EMPLOYMENT IN SELECTED INDUSTRIES, ACT



**NOTE**

This publication contains estimates of the civilian labour force in NSW and the ACT derived from the Labour Force Survey component of the Monthly Population Survey, which is conducted on a sample basis throughout Australia.

Explanatory notes for the data contained within this publication can be found on page 42.

Care should be taken in the interpretation of month-to-month movements in estimates. During the period September to December 1992 a new sample for the Labour Force Survey was introduced, which has increased the variability of estimates of month-to-month movements. See paragraphs 4-6 of the Explanatory Notes or *Information Paper: Labour Force Survey Sample Design* (6269.0), available from any ABS office.

**GREG BRAY**  
Deputy Commonwealth Statistician

TABLE 1. LABOUR FORCE STATUS: ORIGINAL SERIES, NSW

Month	Employed		Unemployed			Labour force ('000)	Not in labour force ('000)	Civilian population aged 15 and over ('000)	Unemployment rate (per cent)	Participation rate (per cent)	
	Full-time workers ('000)	Part-time workers ('000)	Total ('000)	Looking for full-time work ('000)	Looking for part-time work ('000)						
MALES											
May—											
1990	1,435.4	125.0	1,560.5	87.4	9.2	96.6	1,657.0	576.8	2,233.8	5.8	74.2
1991	1,411.0	130.9	1,541.8	131.3	15.4	146.7	1,688.5	571.8	2,260.3	8.7	74.7
1992	1,358.5	147.2	1,505.7	162.8	11.6	174.5	1,680.2	605.1	2,285.3	10.4	73.5
1993—											
March	1,322.0	140.2	1,462.2	180.4	17.2	197.5	1,659.7	642.5	2,302.2	11.9	72.1
April	1,311.1	144.2	1,455.3	172.4	18.6	191.0	1,646.3	657.4	2,303.7	11.6	71.5
May	1,323.1	147.7	1,470.8	173.1	13.6	186.8	1,657.6	647.6	2,305.2	11.3	71.9
1994—											
February	1,344.2	148.4	1,492.6	179.8	16.9	196.7	1,689.4	631.8	2,321.1	11.6	72.8
March	1,340.8	160.0	1,500.9	170.7	17.9	188.6	1,689.4	633.4	2,322.9	11.2	72.7
April	1,348.4	158.3	1,506.8	164.9	10.6	175.5	1,682.3	642.6	2,324.9	10.4	72.4
May	1,352.4	152.4	1,504.8	160.0	12.8	172.8	1,677.6	649.4	2,326.9	10.3	72.1
MARRIED FEMALES											
May—											
1990	352.5	295.4	647.9	20.7	12.4	33.1	681.0	650.9	1,331.8	4.9	51.1
1991	364.7	293.0	657.6	30.3	14.1	44.4	702.0	650.9	1,353.0	6.3	51.9
1992	358.3	302.1	660.5	30.7	14.5	45.3	705.7	642.6	1,348.3	6.4	52.3
1993—											
March	364.1	282.8	646.9	38.2	17.4	55.6	702.5	645.3	1,347.7	7.9	52.1
April	359.9	271.0	631.0	33.8	16.0	49.8	680.7	654.2	1,334.9	7.3	51.0
May	362.2	288.6	650.8	31.6	12.1	43.7	694.5	643.4	1,337.9	6.3	51.9
1994—											
February	391.7	283.9	675.7	38.8	16.1	55.0	730.6	650.4	1,381.0	7.5	52.9
March	397.2	290.3	687.5	32.5	12.8	45.3	732.8	653.3	1,386.1	6.2	52.9
April	397.0	283.8	680.7	30.7	14.7	45.3	726.1	657.6	1,383.7	6.2	52.5
May	398.4	299.9	698.3	30.5	11.7	42.2	740.5	651.2	1,391.7	5.7	53.2
ALL FEMALES											
May—											
1990	673.7	415.5	1,089.2	53.2	25.9	79.1	1,168.3	1,138.8	2,307.1	6.8	50.6
1991	676.8	422.6	1,099.5	68.1	27.1	95.1	1,194.6	1,142.6	2,337.2	8.0	51.1
1992	665.1	434.3	1,099.3	78.0	31.2	109.2	1,208.5	1,156.5	2,365.0	9.0	51.1
1993—											
March	658.7	414.1	1,072.8	93.8	38.6	132.3	1,205.1	1,178.2	2,383.3	11.0	50.6
April	664.1	401.6	1,065.7	79.9	31.3	111.3	1,177.0	1,208.2	2,385.2	9.5	49.3
May	661.7	427.0	1,088.7	78.5	30.7	109.2	1,197.9	1,189.1	2,387.0	9.1	50.2
1994—											
February	687.5	420.4	1,107.9	95.3	34.4	129.8	1,237.7	1,166.8	2,404.5	10.5	51.5
March	691.6	440.5	1,132.1	88.5	33.1	121.6	1,253.7	1,152.7	2,406.4	9.7	52.1
April	683.7	440.0	1,123.7	83.1	31.9	115.0	1,238.7	1,170.0	2,408.7	9.3	51.4
May	682.3	458.3	1,140.6	74.3	29.1	103.5	1,244.0	1,167.1	2,411.1	8.3	51.6
PERSONS											
May—											
1990	2,109.1	540.5	2,649.6	140.6	35.1	175.7	2,825.3	1,715.6	4,540.9	6.2	62.2
1991	2,087.8	553.5	2,641.3	199.3	42.5	241.8	2,883.1	1,714.4	4,597.5	8.4	62.7
1992	2,023.6	581.4	2,605.1	240.9	42.8	283.7	2,888.7	1,761.6	4,650.3	9.8	62.1
1993—											
March	1,980.7	554.3	2,535.0	274.2	55.7	329.9	2,864.9	1,820.7	4,685.5	11.5	61.1
April	1,975.2	545.9	2,521.0	252.4	49.9	302.3	2,823.3	1,865.5	4,688.8	10.7	60.2
May	1,984.8	574.7	2,559.6	251.7	44.3	296.0	2,855.5	1,836.6	4,692.2	10.4	60.9
1994—											
February	2,031.7	568.8	2,600.5	275.1	51.4	326.5	2,927.0	1,798.6	4,725.6	11.2	61.9
March	2,032.4	600.6	2,633.0	259.2	50.9	310.1	2,943.1	1,786.1	4,729.2	10.5	62.2
April	2,032.1	598.4	2,630.5	248.1	42.5	290.5	2,921.0	1,812.6	4,733.6	9.9	61.7
May	2,034.7	610.7	2,645.4	234.3	41.9	276.2	2,921.6	1,816.4	4,738.0	9.5	61.7

TABLE 2. LABOUR FORCE STATUS: SEASONALLY ADJUSTED AND TREND SERIES, NSW

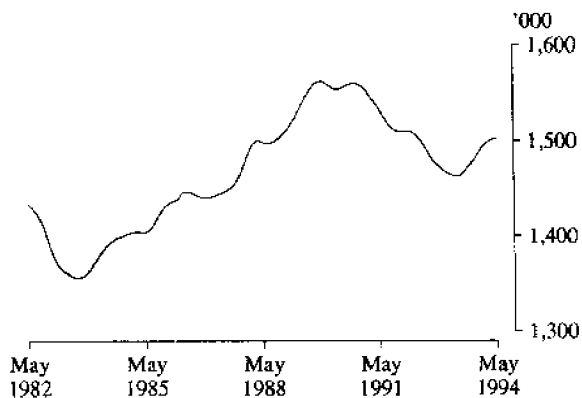
Month	Seasonally adjusted series					Trend series (a)				
	Employed ('000)	Unemp- loyed ('000)	Labour force ('000)	Unemp- loyment rate (per cent)	Partici- pation rate (per cent)	Employed ('000)	Unemp- loyed ('000)	Labour force ('000)	Unemp- loyment rate (per cent)	Partici- pation rate (per cent)
MALES										
May—										
1990	1,557.0	97.4	1,654.4	5.9	74.1	1,555.0	100.0	1,655.1	6.0	74.1
1991	1,537.3	149.3	1,686.6	8.9	74.6	1,532.1	147.5	1,679.6	8.8	74.3
1992	1,500.5	178.9	1,679.4	10.7	73.5	1,503.7	178.2	1,682.0	10.6	73.6
1993—										
March	1,462.5	192.0	1,654.5	11.6	71.9	1,464.4	195.8	1,660.2	11.8	72.1
April	1,451.7	193.1	1,644.9	11.7	71.4	1,463.1	195.0	1,658.1	11.8	72.0
May	1,465.5	192.2	1,657.7	11.6	71.9	1,462.7	194.7	1,657.4	11.7	71.9
June	1,473.8	201.6	1,675.5	12.0	72.6	1,463.8	194.5	1,658.3	11.7	71.9
July	1,465.1	192.4	1,657.5	11.6	71.8	1,467.0	194.2	1,661.2	11.7	72.0
August	1,464.7	191.9	1,656.7	11.6	71.7	1,471.0	193.9	1,664.9	11.6	72.1
September	1,474.7	192.2	1,666.9	11.5	72.1	1,475.2	193.3	1,668.5	11.6	72.2
October	1,483.2	194.6	1,677.8	11.6	72.5	1,480.1	192.1	1,672.2	11.5	72.3
November	1,485.3	188.4	1,673.6	11.3	72.3	1,485.6	190.5	1,676.1	11.4	72.4
December	1,491.8	192.2	1,684.0	11.4	72.7	1,491.1	188.5	1,679.6	11.2	72.5
1994—										
January	1,494.1	186.8	1,680.8	11.1	72.5	1,495.4	186.0	1,681.4	11.1	72.5
February	1,501.8	178.3	1,680.1	10.6	72.4	1,498.3	183.3	1,681.6	10.9	72.4
March	1,501.1	183.4	1,684.5	10.9	72.5	1,500.5	180.9	1,681.4	10.8	72.4
April	1,503.0	177.3	1,680.3	10.6	72.3	1,502.0	178.9	1,680.9	10.6	72.3
May	1,499.2	178.1	1,677.3	10.6	72.1	1,503.0	177.5	1,680.4	10.6	72.2
FEMALES										
May—										
1990	1,082.9	77.9	1,160.8	6.7	50.3	1,081.1	77.8	1,158.9	6.7	50.2
1991	1,092.5	94.6	1,187.1	8.0	50.8	1,081.7	95.2	1,176.9	8.1	50.4
1992	1,091.3	109.7	1,201.0	9.1	50.8	1,095.3	111.5	1,206.8	9.2	51.0
1993—										
March	1,067.8	120.4	1,188.2	10.1	49.9	1,072.2	116.1	1,188.3	9.8	49.9
April	1,063.4	110.0	1,173.4	9.4	49.2	1,073.8	114.1	1,187.9	9.6	49.8
May	1,080.1	110.4	1,190.5	9.3	49.9	1,076.7	112.1	1,188.8	9.4	49.8
June	1,087.2	113.3	1,200.6	9.4	50.3	1,081.6	111.3	1,192.9	9.3	49.9
July	1,083.9	107.4	1,191.4	9.0	49.8	1,088.4	112.4	1,200.8	9.4	50.2
August	1,097.3	115.4	1,212.7	9.5	50.7	1,096.2	114.6	1,210.7	9.5	50.6
September	1,100.4	114.2	1,214.6	9.4	50.7	1,103.3	116.9	1,220.2	9.6	51.0
October	1,112.8	125.2	1,238.1	10.1	51.7	1,109.5	118.3	1,227.8	9.6	51.2
November	1,118.3	123.4	1,241.7	9.9	51.8	1,114.4	118.4	1,232.9	9.6	51.4
December	1,115.3	109.8	1,225.1	9.0	51.0	1,118.1	117.3	1,235.4	9.5	51.5
1994—										
January	1,122.7	115.6	1,238.3	9.3	51.5	1,120.4	115.4	1,235.8	9.3	51.4
February	1,119.0	114.3	1,233.4	9.3	51.3	1,122.3	113.3	1,235.6	9.2	51.4
March	1,127.4	110.5	1,237.9	8.9	51.4	1,124.1	111.5	1,235.6	9.0	51.3
April	1,121.3	113.8	1,235.1	9.2	51.3	1,125.8	109.9	1,235.6	8.9	51.3
May	1,131.2	104.9	1,236.1	8.5	51.3	1,127.3	108.7	1,236.0	8.8	51.3
PERSONS										
May—										
1990	2,640.0	175.3	2,815.3	6.2	62.0	2,636.1	177.9	2,814.0	6.3	62.0
1991	2,629.8	243.8	2,873.7	8.5	62.5	2,613.8	242.7	2,856.5	8.5	62.1
1992	2,591.9	288.6	2,880.5	10.0	61.9	2,599.0	289.7	2,888.7	10.0	62.1
1993—										
March	2,530.3	312.4	2,842.7	11.0	60.7	2,536.6	311.9	2,848.5	10.9	60.8
April	2,515.1	303.2	2,818.3	10.8	60.1	2,536.9	309.1	2,846.0	10.9	60.7
May	2,545.6	302.6	2,848.2	10.6	60.7	2,539.4	306.8	2,846.2	10.8	60.7
June	2,561.0	315.0	2,876.0	11.0	61.3	2,545.3	305.8	2,851.2	10.7	60.7
July	2,549.0	299.8	2,848.9	10.5	60.6	2,555.4	306.6	2,862.0	10.7	60.9
August	2,562.0	307.3	2,869.4	10.7	61.0	2,567.2	308.5	2,875.7	10.7	61.1
September	2,575.1	306.4	2,881.5	10.6	61.2	2,578.5	310.2	2,888.7	10.7	61.4
October	2,596.1	319.8	2,915.9	11.0	61.9	2,589.6	310.4	2,900.0	10.7	61.6
November	2,603.6	311.8	2,915.4	10.7	61.8	2,600.1	308.9	2,909.0	10.6	61.7
December	2,607.1	302.1	2,909.1	10.4	61.7	2,609.2	305.8	2,915.0	10.5	61.8
1994—										
January	2,616.8	302.3	2,919.2	10.4	61.8	2,615.8	301.4	2,917.2	10.3	61.8
February	2,620.8	292.6	2,913.4	10.0	61.7	2,620.6	296.6	2,917.2	10.2	61.7
March	2,628.4	293.9	2,922.4	10.1	61.8	2,624.6	292.4	2,917.0	10.0	61.7
April	2,624.4	291.1	2,915.5	10.0	61.6	2,627.8	288.7	2,916.6	9.9	61.6
May	2,630.4	283.0	2,913.4	9.7	61.5	2,630.3	286.2	2,916.5	9.8	61.6

(a) See Explanatory Note 28.

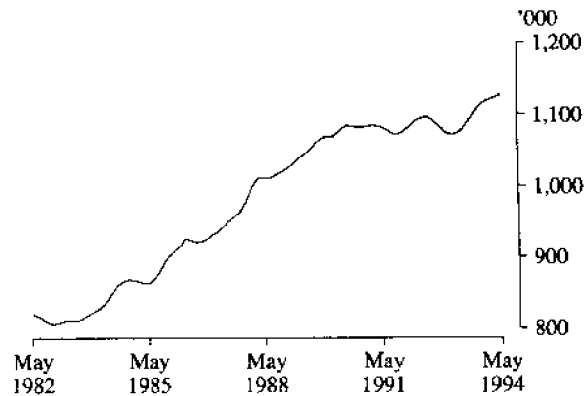


## TREND SERIES, NSW (a)

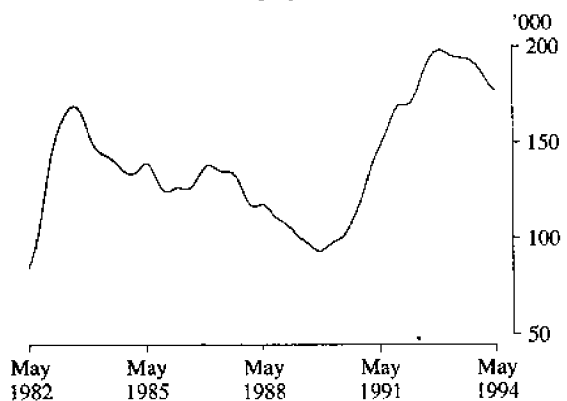
Employed males



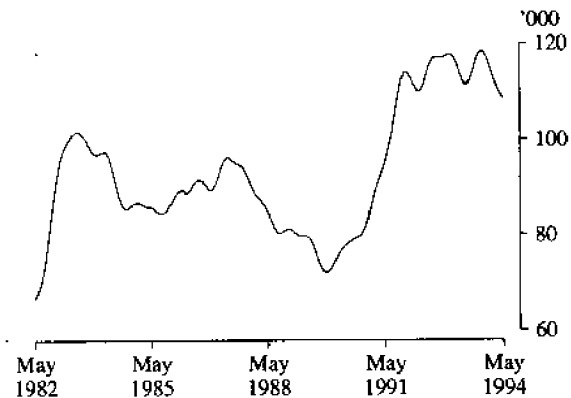
Employed females



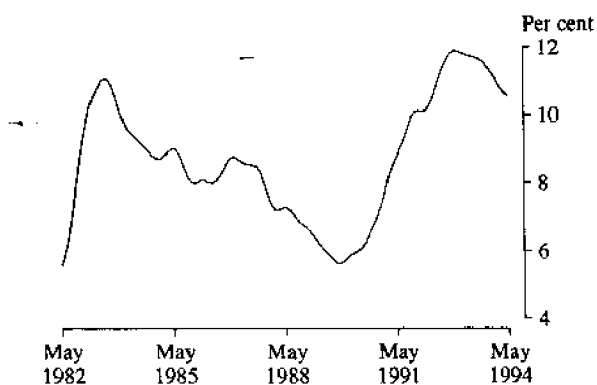
Unemployed males



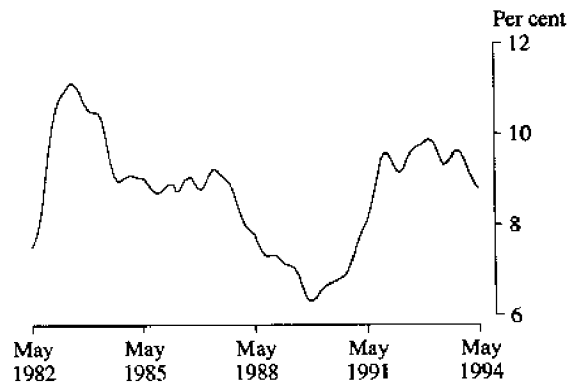
Unemployed females



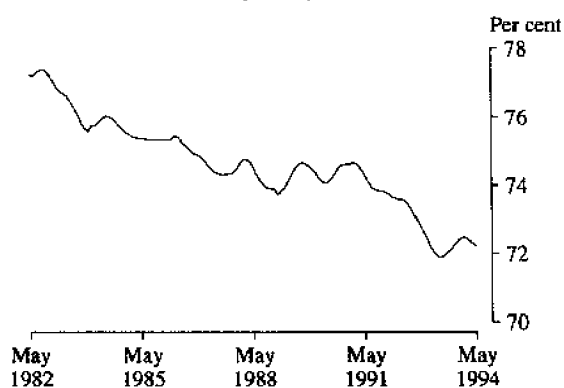
Male unemployment rate



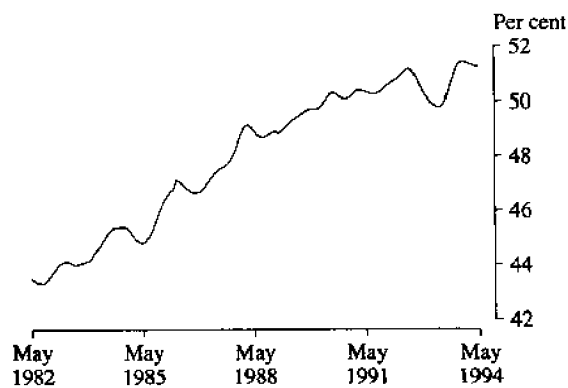
Female unemployment rate



Male participation rate



Female participation rate



(a) Comparisons between these graphs should not be made, as their vertical axes are not similarly scaled.

TABLE 3. LABOUR FORCE STATUS: AGE, NSW, MAY 1994

Age group (years)	Employed			Unemployed			Labour force ('000)	Not in labour force ('000)	Civilian population aged 15 and over ('000)	Unemployment rate (per cent)	Participation rate (per cent)
	Full-time workers ('000)	Part-time workers ('000)	Total ('000)	Looking for full-time work ('000)	Looking for part-time work ('000)	Total ('000)					
<b>MALES</b>											
15-19	48.6	43.2	91.7	20.4	6.5	27.0	118.7	96.8	215.5	22.7	55.1
20-24	150.4	22.8	173.2	29.4	* 2.5	31.9	205.1	34.3	239.4	15.6	85.7
25-34	362.8	20.1	382.9	41.0	* 1.9	42.9	425.8	44.0	469.8	10.1	90.6
35-44	357.6	18.2	375.8	32.8	* 0.3	33.1	408.9	40.8	449.7	8.1	90.9
45-54	290.8	17.0	307.8	20.1	* 0.9	21.0	328.7	42.0	370.7	6.4	88.7
55-59	86.4	8.8	95.2	9.5	* 0.3	9.8	104.9	31.9	136.9	9.3	76.7
60-64	37.0	10.3	47.3	6.2	* 0.3	6.5	53.8	69.2	123.0	12.1	43.8
65 and over	18.9	12.0	30.9	* 0.6	* 0.0	* 0.6	31.5	290.4	321.9	* 1.9	9.8
<b>Total</b>	<b>1,352.4</b>	<b>152.4</b>	<b>1,504.8</b>	<b>160.0</b>	<b>12.8</b>	<b>172.8</b>	<b>1,677.6</b>	<b>649.4</b>	<b>2,326.9</b>	<b>10.3</b>	<b>72.1</b>
<b>MARRIED FEMALES</b>											
15-19	* 1.1	* 0.4	* 1.5	* 2.6	* 0.0	* 2.6	* 4.1	* 2.6	6.7	* 63.7	* 61.1
20-24	34.7	8.9	43.7	* 4.0	* 0.6	* 4.6	48.3	19.8	68.1	* 9.5	70.9
25-34	115.4	77.9	193.3	11.1	* 4.2	15.4	208.7	122.4	331.1	7.4	63.0
35-44	113.9	110.6	224.5	* 5.1	* 4.6	9.8	234.3	115.6	349.9	4.2	67.0
45-54	102.7	74.2	176.9	6.0	* 1.3	7.3	184.2	93.5	277.7	4.0	66.3
55-59	22.1	17.7	39.7	* 1.6	* 0.6	* 2.3	42.0	57.7	99.7	* 5.4	42.1
60-64	5.4	6.4	11.8	* 0.0	* 0.0	* 0.0	11.8	74.4	86.2	* 0.0	13.7
65 and over	* 3.2	* 3.8	7.0	* 0.0	* 0.3	* 0.3	7.3	165.1	172.4	* 4.0	4.2
<b>Total</b>	<b>398.4</b>	<b>299.9</b>	<b>698.3</b>	<b>30.5</b>	<b>11.7</b>	<b>42.2</b>	<b>740.5</b>	<b>651.2</b>	<b>1,391.7</b>	<b>5.7</b>	<b>53.2</b>
<b>ALL FEMALES</b>											
15-19	22.6	67.2	89.8	14.1	8.3	22.4	112.2	94.0	206.2	19.9	54.4
20-24	120.8	40.9	161.7	16.4	* 4.0	20.4	182.1	53.3	235.3	11.2	77.4
25-34	192.5	97.9	290.5	18.0	7.6	25.5	316.0	158.8	474.8	8.1	66.6
35-44	162.1	129.7	291.8	10.0	5.9	15.8	307.6	144.4	452.0	5.1	68.1
45-54	141.4	84.8	226.2	13.0	* 1.8	14.8	241.1	115.5	356.6	6.1	67.6
55-59	29.7	22.9	52.6	* 3.0	* 1.3	* 4.3	56.9	77.9	134.7	* 7.5	42.2
60-64	7.6	8.7	16.3	* 0.0	* 0.0	* 0.0	16.3	108.4	124.7	* 0.0	13.1
65 and over	5.5	6.2	11.7	* 0.0	* 0.3	* 0.3	12.0	414.9	426.8	* 2.4	2.8
<b>Total</b>	<b>682.3</b>	<b>458.3</b>	<b>1,140.6</b>	<b>74.3</b>	<b>29.1</b>	<b>103.5</b>	<b>1,244.0</b>	<b>1,167.1</b>	<b>2,411.1</b>	<b>8.3</b>	<b>51.6</b>
<b>PERSONS</b>											
15-19	71.2	110.4	181.6	34.5	14.8	49.3	230.9	190.8	421.7	21.4	54.8
20-24	271.2	63.7	334.9	45.8	6.5	52.3	387.2	87.6	474.7	13.5	81.6
25-34	555.3	118.1	673.4	59.0	9.5	68.5	741.8	202.7	944.6	9.2	78.5
35-44	519.7	147.9	667.6	42.8	6.2	49.0	716.5	185.2	901.7	6.8	79.5
45-54	432.2	101.8	534.0	33.0	* 2.7	35.8	569.8	157.5	727.3	6.3	78.3
55-59	116.0	31.7	147.8	12.4	* 1.6	14.1	161.8	109.8	271.6	8.7	59.6
60-64	44.6	19.0	63.6	6.2	* 0.3	6.5	70.1	177.6	247.7	9.3	28.3
65 and over	24.4	18.2	42.6	* 0.6	* 0.3	* 0.9	43.5	705.2	748.7	* 2.0	5.8
<b>Total</b>	<b>2,034.7</b>	<b>610.7</b>	<b>2,645.4</b>	<b>234.3</b>	<b>41.9</b>	<b>276.2</b>	<b>2,921.6</b>	<b>1,816.4</b>	<b>4,738.0</b>	<b>9.5</b>	<b>61.7</b>

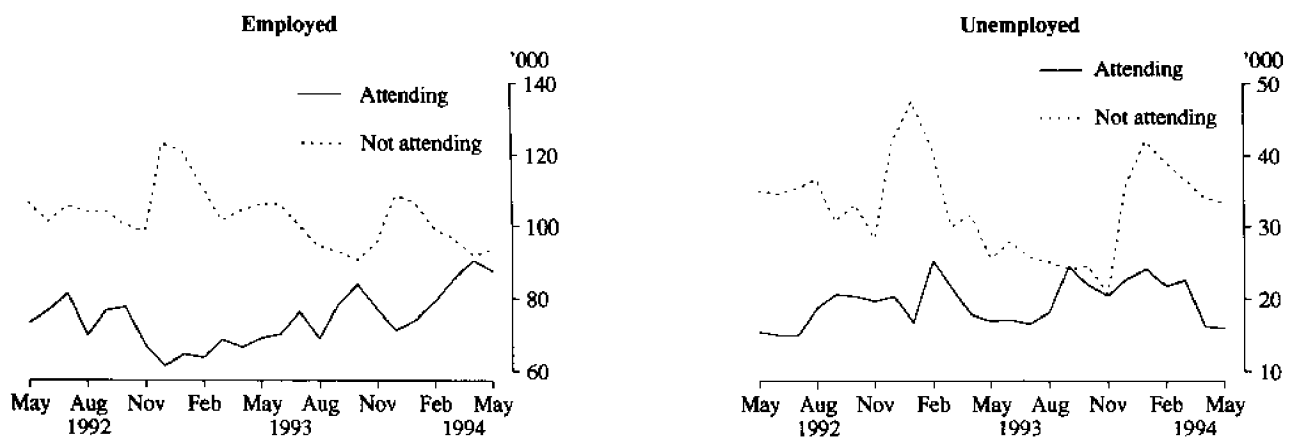
PERSONS AGED 15-19 IN THE LABOUR FORCE, NSW:  
FULL-TIME ATTENDANCE AT SCHOOL OR A TERTIARY EDUCATIONAL INSTITUTION

TABLE 4. LABOUR FORCE STATUS: PERSONS AGED 15-24 BY FULL-TIME EDUCATIONAL ATTENDANCE, NSW, MAY 1994

Age (years)	Employed			Unemployed			Labour force ('000)	Not in labour force ('000)	Civilian population aged 15 and over ('000)	Unemployment rate (per cent)	Participation rate (per cent)
	Full-time workers ('000)	Part-time workers ('000)	Total ('000)	Looking for full-time work ('000)	Looking for part-time work ('000)	Total ('000)					
<b>ATTENDING SCHOOL OR A TERTIARY EDUCATIONAL INSTITUTION FULL-TIME</b>											
15-19	* 0.3	87.5	87.8	* 2.1	13.9	16.0	103.8	174.8	278.7	15.4	37.3
15	* 0.0	20.9	20.9	* 0.0	5.4	5.4	26.3	53.2	79.5	20.6	33.0
16	* 0.0	22.2	22.2	* 0.0	* 3.3	* 3.3	25.4	44.9	70.3	* 12.9	36.2
17	* 0.0	20.5	20.5	* 1.4	* 1.3	* 2.7	23.2	40.2	63.4	* 11.8	36.6
18	* 0.0	13.6	13.6	* 0.4	* 1.9	* 2.3	15.9	19.6	35.5	* 14.4	44.8
19	* 0.3	10.4	10.7	* 0.3	* 2.0	* 2.3	13.0	16.9	29.9	* 17.6	43.5
20-24	* 2.0	28.0	30.0	* 2.1	* 4.1	6.2	36.2	35.3	71.5	17.1	50.6
20	* 0.0	9.3	9.3	* 1.1	* 0.9	* 2.0	11.3	12.9	24.2	* 17.8	46.6
21	* 0.7	9.1	9.8	* 0.7	* 1.2	* 1.9	11.7	7.4	19.1	* 16.0	61.4
22	* 1.0	* 5.2	6.2	* 0.0	* 1.0	* 1.0	7.2	* 4.1	11.3	* 13.8	63.4
23	* 0.3	* 2.9	* 3.3	* 0.0	* 1.0	* 1.0	* 4.2	6.9	11.1	* 23.1	* 38.1
24	* 0.0	* 1.5	* 1.5	* 0.3	* 0.0	* 0.3	* 1.8	* 4.0	5.8	* 19.2	* 31.1
<b>Total aged 15-24</b>	<b>* 2.4</b>	<b>115.5</b>	<b>117.8</b>	<b>* 4.2</b>	<b>18.0</b>	<b>22.2</b>	<b>140.0</b>	<b>210.1</b>	<b>350.2</b>	<b>15.9</b>	<b>40.0</b>
<b>NOT ATTENDING SCHOOL OR A TERTIARY EDUCATIONAL INSTITUTION FULL-TIME (a)</b>											
15-19	70.9	22.9	93.7	32.4	* 0.9	33.3	127.1	16.0	143.0	26.2	88.8
15	* 0.6	* 0.7	* 1.3	* 1.5	* 0.0	* 1.5	* 2.8	* 0.6	* 3.4	* 53.2	* 81.3
16	5.7	* 1.7	7.4	* 4.5	* 0.0	* 4.5	11.8	* 0.7	12.5	* 37.6	94.5
17	11.4	* 3.0	14.4	* 3.8	* 0.0	* 3.8	18.2	* 2.0	20.2	* 20.8	89.9
18	23.3	9.9	33.1	10.5	* 0.6	11.1	44.2	* 4.6	48.8	25.1	90.6
19	29.9	7.6	37.5	12.2	* 0.3	12.5	50.0	8.1	58.0	24.9	86.1
20-24	269.2	35.7	304.9	43.7	* 2.4	46.1	351.0	52.2	403.2	13.1	87.0
20	41.1	8.2	49.3	8.6	* 0.0	8.6	57.9	8.6	66.5	14.8	87.1
21	43.9	8.5	52.4	7.2	* 0.0	7.2	59.6	15.2	74.7	12.1	79.7
22	55.0	7.2	62.2	13.1	* 0.7	13.7	75.9	11.2	87.1	18.1	87.2
23	66.0	* 4.9	70.9	7.3	* 1.4	8.7	79.6	8.2	87.8	11.0	90.7
24	63.3	6.9	70.1	7.5	* 0.3	7.8	77.9	9.2	87.1	10.0	89.5
<b>Total aged 15-24</b>	<b>340.0</b>	<b>58.6</b>	<b>398.6</b>	<b>76.1</b>	<b>* 3.3</b>	<b>79.4</b>	<b>478.0</b>	<b>68.2</b>	<b>546.2</b>	<b>16.6</b>	<b>87.5</b>
<b>TOTAL</b>											
15-19	71.2	110.4	181.6	34.5	14.8	49.3	230.9	190.8	421.7	21.4	54.8
15	* 0.6	21.6	22.2	* 1.5	5.4	6.9	29.1	53.9	82.9	23.7	35.0
16	5.7	23.9	29.6	* 4.5	* 3.3	7.7	37.3	45.6	82.8	20.7	45.0
17	11.4	23.4	34.9	* 5.2	* 1.3	6.5	41.4	42.2	83.6	15.8	49.5
18	23.3	23.5	46.7	10.9	* 2.5	13.4	60.1	24.2	84.3	22.3	71.3
19	30.2	18.0	48.3	12.5	* 2.3	14.8	63.0	25.0	88.0	23.4	71.6
20-24	271.2	63.7	334.9	45.8	6.5	52.3	387.2	87.6	474.7	13.5	81.6
20	41.1	17.5	58.6	9.7	* 0.9	10.6	69.2	21.5	90.7	15.3	76.3
21	44.6	17.6	62.2	7.9	* 1.2	9.1	71.3	22.5	93.8	12.7	76.0
22	56.0	12.4	68.4	13.1	* 1.7	14.7	83.1	15.3	98.4	17.7	84.4
23	66.3	7.9	74.2	7.3	* 2.4	9.7	83.9	15.1	98.9	11.6	84.8
24	63.3	8.3	71.6	7.9	* 0.3	8.1	79.7	13.2	92.9	10.2	85.8
<b>Total aged 15-24</b>	<b>342.4</b>	<b>174.1</b>	<b>516.5</b>	<b>80.3</b>	<b>21.3</b>	<b>101.6</b>	<b>618.1</b>	<b>278.4</b>	<b>896.4</b>	<b>16.4</b>	<b>68.9</b>

(a) Includes institutionalised persons.

TABLE 5. LABOUR FORCE STATUS: FAMILY STATUS, NSW, MAY 1994

Family status	Employed			Unemployed			Labour force ('000)	Not in labour force ('000)	Civilian population aged 15 and over ('000)	Unemployment rate (per cent)	Participation rate (per cent)
	Full-time workers ('000)	Part-time workers ('000)	Total ('000)	Looking for full-time work ('000)	Looking for part-time work ('000)	Total ('000)					
<i>Member of a family</i>	1,680.2	531.9	2,212.1	190.7	36.0	226.7	2,438.8	1,339.3	3,778.1	9.3	64.6
<i>Husband</i>	902.7	58.1	960.7	78.3	* 1.3	79.6	1,040.3	323.8	1,364.0	7.6	76.3
With children aged 0-14 present	491.4	19.1	510.5	49.9	* 0.6	50.5	561.1	30.6	591.7	9.0	94.8
Without children aged 0-14 present	411.2	38.9	450.2	28.4	* 0.7	29.0	479.2	293.2	772.4	6.1	62.0
With dependants present	558.9	23.2	582.1	51.4	* 0.6	52.1	634.2	43.9	678.1	8.2	93.5
Without dependants present	343.7	34.9	378.6	26.9	* 0.7	27.5	406.1	279.8	686.0	6.8	59.2
<i>Wife</i>	384.7	291.1	675.8	29.4	11.7	41.1	716.9	628.6	1,345.5	5.7	53.3
With children aged 0-14 present	134.9	176.2	311.2	16.2	9.5	25.7	336.8	240.5	577.3	7.6	58.3
Without children aged 0-14 present	249.8	114.8	364.7	13.2	* 2.2	15.4	380.1	388.1	768.2	4.1	49.5
With dependants present	170.9	196.7	367.6	18.9	10.1	29.1	396.6	267.3	664.0	7.3	59.7
Without dependants present	213.8	94.4	308.2	10.4	* 1.6	12.0	320.2	361.3	681.5	3.7	47.0
<i>Not-married male family head</i>	26.2	* 2.5	28.8	* 2.2	* 0.6	* 2.9	31.6	12.9	44.5	* 9.1	71.1
With children aged 0-14 present	5.9	* 0.9	6.8	* 0.6	* 0.3	* 1.0	7.8	* 2.6	10.4	* 12.5	75.3
Without children aged 0-14 present	20.3	* 1.6	21.9	* 1.6	* 0.3	* 1.9	23.8	10.3	34.1	* 7.9	69.8
With dependants present	10.9	* 1.2	12.1	* 1.0	* 0.3	* 1.3	13.4	* 3.6	17.0	* 9.8	79.0
Without dependants present	15.4	* 1.3	16.7	* 1.3	* 0.3	* 1.6	18.2	9.3	27.5	* 8.5	66.2
<i>Not-married female family head</i>	46.3	28.5	74.8	9.0	* 5.2	14.2	89.0	105.3	194.3	15.9	45.8
With children aged 0-14 present	21.2	20.6	41.8	* 3.1	* 4.3	7.4	49.2	51.2	100.4	15.0	49.0
Without children aged 0-14 present	25.1	7.9	33.0	5.9	* 0.9	6.8	39.8	54.1	93.9	17.1	42.4
With dependants present	29.3	23.8	53.1	5.6	* 5.2	10.8	63.9	58.7	122.6	16.9	52.1
Without dependants present	17.0	* 4.7	21.7	* 3.4	* 0.0	* 3.4	25.1	46.6	71.7	* 13.6	35.0
<i>Full-time student aged 15-24 (a)</i>	* 1.2	100.2	101.4	* 3.5	15.1	18.6	120.0	176.6	296.6	15.5	40.5
<i>Other child of family head</i>	291.7	47.2	339.0	61.3	* 2.1	63.4	402.3	48.4	450.7	15.7	89.3
<i>Other relative of family head</i>	27.3	* 4.3	31.6	7.1	* 0.0	7.1	38.7	43.7	82.4	18.3	46.9
<i>Not a member of a family</i>	296.4	56.7	353.1	36.4	* 4.3	40.8	393.9	315.2	709.1	10.4	55.6
Living alone	137.7	25.2	163.0	17.3	* 1.3	18.5	181.5	262.4	443.9	10.2	40.9
Not living alone	158.7	31.5	190.1	19.2	* 3.1	22.3	212.4	52.8	265.2	10.5	80.1
<i>Not family coded</i>	58.1	22.1	80.2	7.1	* 1.6	8.7	88.9	162.0	250.9	9.8	35.4
<b>Total</b>	<b>2,034.7</b>	<b>610.7</b>	<b>2,645.4</b>	<b>234.3</b>	<b>41.9</b>	<b>276.2</b>	<b>2,921.6</b>	<b>1,816.4</b>	<b>4,738.0</b>	<b>9.5</b>	<b>61.7</b>

(a) Excludes persons aged 20-24 attending school.

TABLE 6. EMPLOYED PERSONS: STATUS OF WORKER, NSW ('000)

Status of worker	Males			Females			Persons		
	May 1993	February 1994	May 1994	May 1993	February 1994	May 1994	May 1993	February 1994	May 1994
<i>Wage and salary earners</i>	1,213.8	1,229.4	1,252.0	958.8	988.6	1,017.3	2,172.6	2,217.9	2,269.3
Employers	76.1	83.2	77.0	35.1	37.7	37.5	111.2	120.9	114.5
Self-employed	170.7	170.2	166.2	77.1	65.5	71.3	247.9	235.7	237.5
<b>Total employed (a)</b>	<b>1,470.8</b>	<b>1,492.6</b>	<b>1,504.8</b>	<b>1,088.7</b>	<b>1,107.9</b>	<b>1,140.6</b>	<b>2,559.6</b>	<b>2,600.5</b>	<b>2,645.4</b>

(a) Includes unpaid family helpers.

**TABLE 7. EMPLOYED PERSONS: AGE, NSW  
('000)**

Month	Age group (years)								Total employed
	15-19	20-24	25-34	35-44	45-54	55-59	60-64	65 and over	
<b>MALES</b>									
1993—									
May	88.3	172.7	382.6	381.8	292.9	82.0	48.6	21.9	1,470.8
1994—									
February	93.6	174.2	378.1	377.7	298.8	94.6	49.0	26.7	1,492.6
March	92.7	174.7	381.3	373.2	303.6	94.3	52.3	28.8	1,500.9
April	93.3	170.5	385.8	375.4	304.3	96.1	49.7	31.6	1,506.8
May	91.7	173.2	382.9	375.8	307.8	95.2	47.3	30.9	1,504.8
<b>MARRIED FEMALES</b>									
1993—									
May	* 0.9	36.8	177.8	226.3	160.8	36.0	7.2	* 5.0	650.8
1994—									
February	* 1.3	41.0	184.7	222.3	165.5	39.5	13.0	8.4	675.7
March	* 1.8	44.6	188.6	219.6	171.9	38.5	13.1	9.4	687.5
April	* 1.4	42.5	189.1	218.9	170.1	38.5	12.1	8.2	680.7
May	* 1.5	43.7	193.3	224.5	176.9	39.7	11.8	7.0	698.3
<b>ALL FEMALES</b>									
1993—									
May	87.1	155.0	279.9	290.5	207.4	46.9	12.5	9.2	1,088.7
1994—									
February	84.8	159.3	287.3	280.8	214.2	50.0	18.3	13.2	1,107.9
March	89.7	165.0	290.0	281.6	221.5	50.9	18.3	15.1	1,132.1
April	89.5	162.6	289.7	280.0	221.3	51.0	17.2	12.4	1,123.7
May	89.8	161.7	290.5	291.8	226.2	52.6	16.3	11.7	1,140.6
<b>PERSONS</b>									
1993—									
May	175.4	327.7	662.5	672.3	500.3	128.9	61.2	31.1	2,559.6
1994—									
February	178.4	333.4	665.5	658.5	513.0	144.6	67.3	39.8	2,600.5
March	182.4	339.7	671.4	654.8	525.1	145.2	70.6	43.8	2,633.0
April	182.8	333.2	675.5	655.4	525.6	147.1	66.9	44.0	2,630.5
May	181.6	334.9	673.4	667.6	534.0	147.8	63.6	42.6	2,645.4

**ANNUAL CHANGE IN EMPLOYMENT BY AGE, NSW,  
MAY 1993 TO MAY 1994**

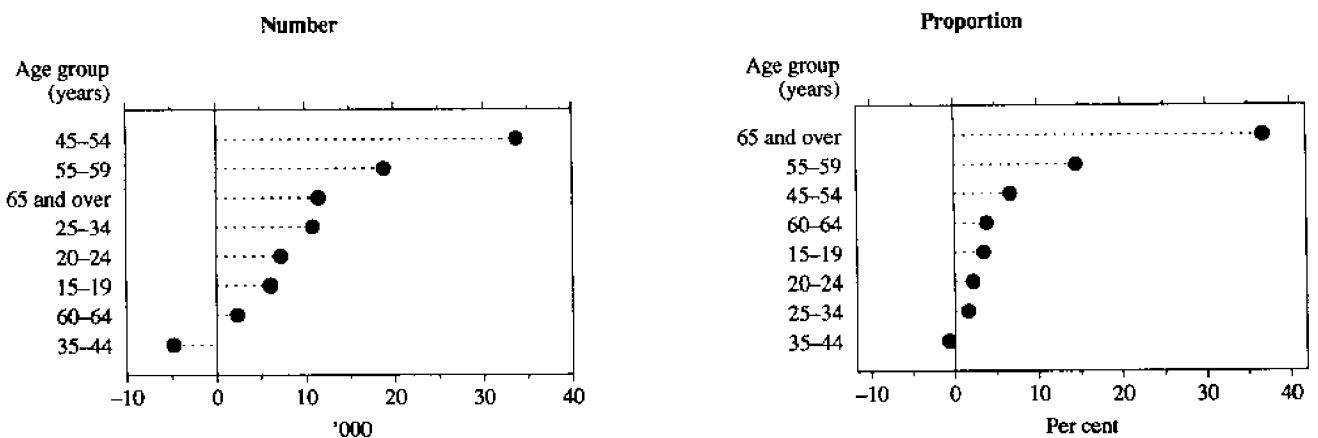


TABLE 8. EMPLOYED PERSONS: INDUSTRY, NSW  
(\*000)

Industry division and subdivision	Males			Females			Persons		
	May 1993	Feb- ruary 1994	May 1994	May 1993	Feb- ruary 1994	May 1994	May 1993	Feb- ruary 1994	May 1994
<i>Agriculture, forestry, fishing and hunting</i>	73.1	75.1	76.0	30.0	37.1	31.8	103.1	112.2	107.8
Agriculture	63.9	67.6	66.9	28.8	34.6	30.3	92.7	102.2	97.2
Services to agriculture	* 3.5	* 3.4	* 3.0	* 0.6	* 1.5	* 0.9	* 4.1	* 5.0	* 3.9
Forestry and logging	* 2.3	* 2.0	* 3.2	* 0.3	* 0.0	* 0.0	* 2.6	* 2.0	* 3.2
Fishing and hunting	* 3.4	* 2.0	* 2.9	* 0.3	* 1.0	* 0.7	* 3.7	* 3.0	* 3.5
<i>Mining</i>	28.0	24.1	21.8	* 0.9	* 1.9	* 1.5	28.9	26.0	23.3
Metallic minerals	* 1.3	* 1.0	* 1.0	* 0.3	* 0.3	* 0.0	* 1.6	* 1.3	* 1.0
Coal	21.6	18.6	16.0	* 0.3	* 1.2	* 0.3	21.9	19.8	16.4
Construction materials	* 1.0	* 2.0	* 1.6	* 0.0	* 0.0	* 0.6	* 1.0	* 2.0	* 2.2
Services to mining, n.e.c.	* 0.7	* 0.9	* 0.6	* 0.3	* 0.4	* 0.3	* 1.0	* 1.3	* 0.9
Other mining	* 3.4	* 1.6	* 2.5	* 0.0	* 0.0	* 0.3	* 3.4	* 1.6	* 2.8
<i>Manufacturing</i>	268.8	276.1	272.4	108.2	114.7	112.2	376.9	390.8	384.6
Food, beverages and tobacco	43.2	44.2	40.1	20.0	17.6	16.4	63.1	61.8	56.4
Textiles	5.6	5.8	* 5.1	* 3.0	* 3.4	* 2.9	8.6	9.2	8.0
Clothing and footwear	7.7	6.6	7.3	15.9	21.4	17.9	23.6	28.0	25.2
Wood, wood products and furniture	26.2	25.8	25.8	6.3	8.7	8.0	32.5	34.5	33.8
Paper, paper products, printing and publishing	28.2	27.5	24.9	18.5	19.4	21.3	46.7	46.9	46.2
Chemical, petroleum and coal products	19.4	16.7	17.4	10.4	8.0	7.3	29.8	24.7	24.8
Non-metallic mineral products	15.2	13.7	13.8	* 2.0	* 2.8	* 3.0	17.2	16.5	16.8
Basic metal products	26.9	25.9	26.2	* 2.3	* 2.8	* 2.9	29.2	28.7	29.0
Fabricated metal products	28.9	39.0	37.2	6.7	6.0	7.3	35.6	45.0	44.6
Transport equipment	15.6	20.4	20.2	* 3.0	* 2.7	* 3.7	18.6	23.1	23.9
Other machinery and equipment	38.8	34.8	40.3	13.5	13.5	14.5	52.3	48.3	54.8
Miscellaneous manufacturing	13.0	15.7	14.0	6.7	8.3	7.0	19.7	24.0	21.1
<i>Electricity, gas and water</i>	30.8	30.0	30.0	7.1	6.1	5.4	38.0	36.1	35.4
Electricity and gas	20.4	18.7	21.0	* 4.4	* 4.2	* 4.2	24.8	22.9	25.2
Water, sewerage and drainage	10.4	11.4	9.0	* 2.8	* 1.9	* 1.2	13.2	13.2	10.2
<i>Construction</i>	160.3	159.4	159.4	21.9	22.6	23.2	182.2	182.0	182.6
General construction	54.9	55.3	58.5	7.5	8.6	9.6	62.4	63.9	68.1
Special trade construction	105.3	104.0	101.0	14.5	14.0	13.6	119.8	118.1	114.5
<i>Wholesale and retail trade</i>	298.1	302.6	312.0	260.4	233.8	254.9	558.5	536.4	566.9
Wholesale trade	111.5	110.3	121.7	54.3	56.8	60.4	165.9	167.1	182.1
Retail trade	186.6	192.4	190.3	206.1	177.0	194.5	392.6	369.4	384.7
<i>Transport and storage</i>	102.0	94.7	100.1	32.9	33.3	30.9	135.0	128.0	131.0
Road freight transport	37.3	37.6	40.1	8.3	8.4	8.3	45.6	46.0	48.3
Road passenger transport	18.8	17.5	19.4	* 4.0	* 4.5	* 4.2	22.8	22.0	23.5
Rail transport	19.4	13.4	14.5	* 2.0	* 1.5	* 1.5	21.4	14.9	16.0
Water transport	* 1.2	* 1.3	* 1.0	* 0.9	* 0.0	* 0.0	* 2.1	* 1.3	* 1.0
Air transport	11.4	8.0	6.6	6.9	6.2	* 4.6	18.3	14.2	11.2
Other transport	* 0.0	* 0.3	* 1.0	* 0.0	* 0.0	* 0.0	* 0.0	* 0.3	* 1.0
Services to road transport	* 1.6	* 1.0	* 0.9	* 0.3	* 0.3	* 0.0	* 1.8	* 1.4	* 0.9
Services to water transport	* 5.1	* 4.2	* 4.3	* 0.3	* 0.7	* 1.2	5.4	* 4.9	5.5
Services to air transport	* 1.5	* 1.9	* 1.2	* 0.3	* 0.9	* 0.6	* 1.9	* 2.8	* 1.8
Other services to transport	* 3.2	7.3	7.8	8.5	8.8	9.2	11.7	16.2	16.9
Storage	* 2.4	* 2.2	* 3.5	* 1.5	* 1.8	* 1.3	* 4.0	* 4.0	* 4.8
<i>Communication</i>	25.9	33.7	29.4	13.8	15.7	15.5	39.7	49.4	44.9
<i>Finance, property and business services</i>	160.2	173.8	167.6	151.2	164.3	167.5	311.4	338.1	335.1
Finance and investment	37.5	42.3	36.2	45.8	47.0	52.5	83.3	89.3	88.7
Insurance and services to insurance	11.5	13.9	14.6	16.7	19.4	22.9	28.2	33.2	37.5
Property and business services	111.2	117.6	116.8	88.7	98.0	92.1	199.9	215.6	208.9
<i>Public administration and defence</i>	65.7	68.8	65.9	43.6	42.8	39.2	109.4	111.6	105.1
Public administration	59.7	61.9	57.0	38.6	42.1	38.9	98.3	104.0	95.8
Defence	6.0	6.9	8.9	* 5.0	* 0.7	* 0.3	11.0	7.5	9.3
<i>Community services</i>	148.6	158.8	168.2	310.4	316.3	345.3	459.0	475.1	513.5
Health	41.8	43.0	46.1	136.2	150.9	158.2	178.0	193.8	204.3
Education, museum and library services	59.4	56.7	68.6	120.2	105.0	122.9	179.6	161.7	191.6
Welfare and religious institutions	13.8	18.4	15.2	37.6	43.1	46.0	51.4	61.5	61.2
Other community services	33.6	40.7	38.3	16.4	17.3	18.1	50.0	58.1	56.4
<i>Recreation, personal and other services</i>	109.3	95.5	102.0	108.1	119.2	113.2	217.4	214.8	215.1
Entertainment and recreational services	23.7	26.5	30.3	21.7	22.9	24.0	45.5	49.5	54.3
Restaurants, hotels and clubs	66.0	56.2	59.9	61.9	72.0	67.7	127.9	128.2	127.6
Personal services	18.6	12.2	11.5	21.3	21.6	20.0	40.0	33.7	31.4
Private households employing staff	* 1.0	* 0.6	* 0.3	* 3.1	* 2.7	* 1.5	* 4.1	* 3.3	* 1.8
<b>Total employed</b>	<b>1,470.8</b>	<b>1,492.6</b>	<b>1,504.8</b>	<b>1,088.7</b>	<b>1,107.9</b>	<b>1,140.6</b>	<b>2,559.6</b>	<b>2,600.5</b>	<b>2,645.4</b>

ANNUAL CHANGE IN EMPLOYMENT BY INDUSTRY DIVISION, NSW,  
MAY 1993 TO MAY 1994

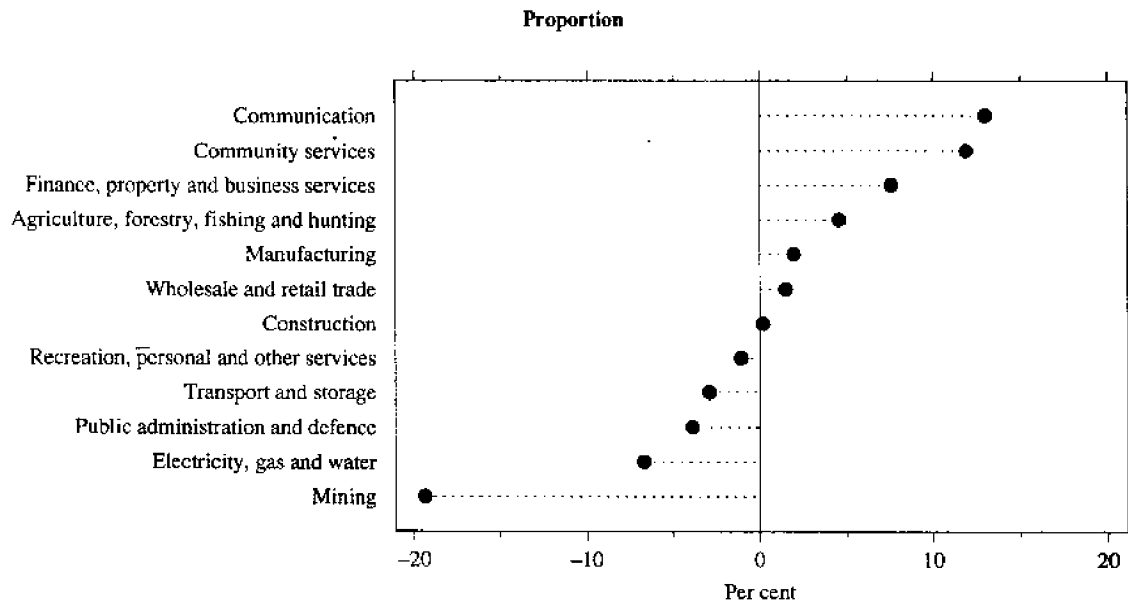
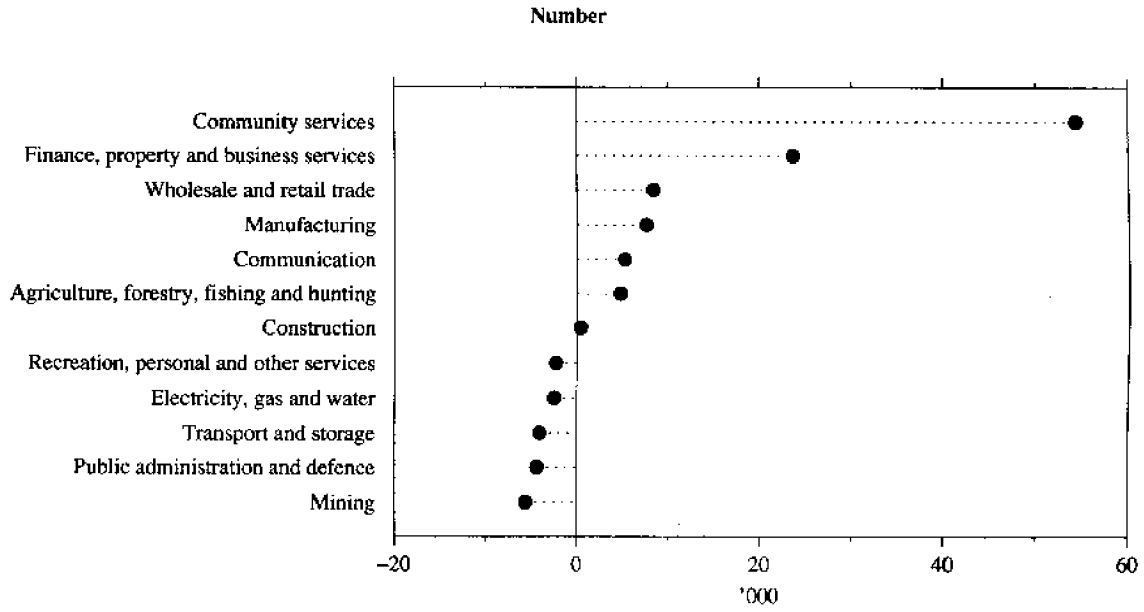


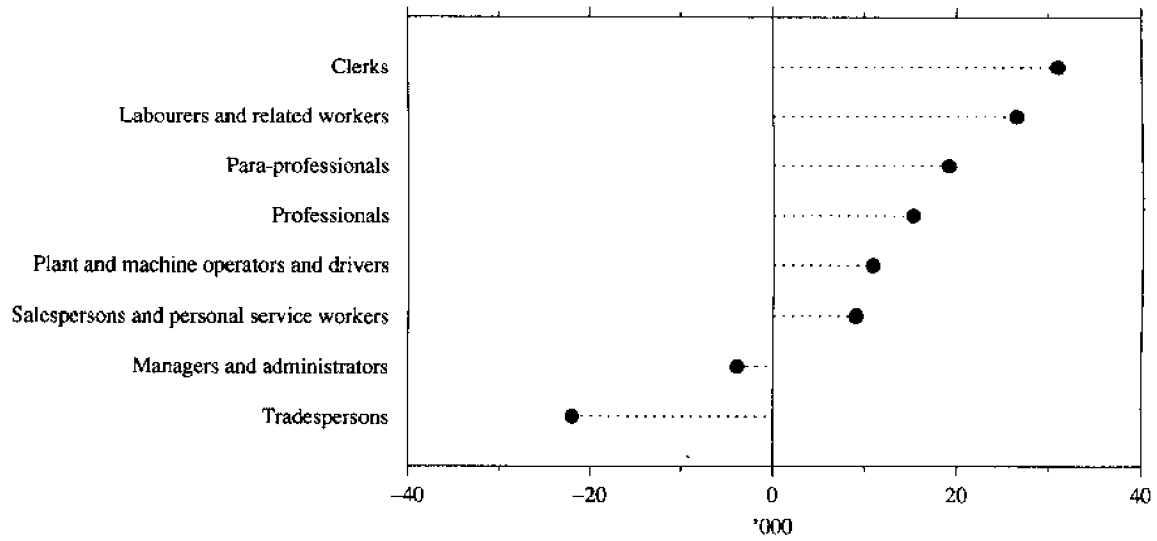
TABLE 9. EMPLOYED PERSONS: OCCUPATION, NSW  
(<sup>'000</sup>)

Major and minor occupation group	Males			Females			Persons		
	May 1993	February 1994	May 1994	May 1993	February 1994	May 1994	May 1993	February 1994	May 1994
<i>Managers and administrators</i>	220.4	227.3	221.7	77.3	80.7	72.1	297.7	308.0	293.8
Legislators and government appointed officials	* 0.4	* 0.0	* 0.0	* 0.0	* 0.3	* 0.3	* 0.4	* 0.3	* 0.3
General managers	11.2	13.5	10.8	* 2.5	* 2.5	* 2.8	13.6	16.0	13.6
Specialist managers	52.5	50.9	52.0	18.0	20.1	12.4	70.5	71.0	64.4
Farmers and farm managers	46.5	49.3	45.7	18.3	21.1	19.7	64.8	70.4	65.4
Managing supervisors (sales and service)	77.2	74.4	75.0	34.4	32.6	35.1	111.6	107.0	110.1
Managing supervisors (other business)	32.6	39.2	38.2	* 4.1	* 4.0	* 1.8	36.8	43.2	40.0
<i>Professionals</i>	199.2	215.7	213.2	161.9	149.3	163.1	361.1	365.1	376.2
Natural scientists	6.5	7.1	7.6	* 4.1	* 1.8	* 4.9	10.6	8.9	12.5
Building professionals and engineers	31.5	38.2	37.5	* 0.7	* 1.2	* 0.6	32.1	39.5	38.1
Health diagnosis and treatment practitioners	19.4	21.4	20.2	17.7	14.9	13.4	37.1	36.3	33.7
School teachers	27.8	21.0	25.0	60.0	51.0	59.7	87.8	72.0	84.7
Other teachers and instructors	15.0	18.4	17.1	20.3	17.3	21.6	35.3	35.6	38.7
Social professionals	19.3	19.2	17.6	8.5	8.8	6.2	27.9	28.0	23.8
Business professionals	59.0	65.7	66.6	30.6	33.1	32.1	89.6	98.8	98.7
Artists and related professionals	14.9	16.1	14.0	10.6	10.8	11.6	25.5	26.9	25.6
Miscellaneous professionals	5.9	8.5	7.6	9.3	10.5	12.9	15.2	19.0	20.5
<i>Para-professionals</i>	70.7	83.2	79.7	71.9	75.8	82.0	142.6	159.0	161.7
Medical and science technical officers and technicians	* 2.7	* 2.9	* 4.2	* 4.0	* 3.6	* 5.1	6.7	6.5	9.3
Engineering and building associates and technicians	26.0	28.0	24.6	* 1.8	* 2.3	* 1.7	27.8	30.3	26.3
Air and sea transport technical workers	* 3.4	5.4	* 4.0	* 0.0	* 0.3	* 0.0	* 3.4	5.7	* 4.0
Registered nurses	* 3.1	5.4	5.3	47.4	52.7	56.7	50.4	58.1	62.0
Police	9.3	12.1	12.6	* 1.0	* 1.2	* 2.4	10.2	13.4	14.9
Miscellaneous para-professionals	26.2	29.4	29.0	17.8	15.6	16.1	44.0	45.0	45.2
<i>Tradespersons</i>	339.0	327.6	318.3	35.0	40.7	33.6	374.0	368.4	352.0
Metal fitting and machining tradespersons	38.1	32.4	29.7	* 0.0	* 0.4	* 0.8	38.1	32.7	30.5
Other metal tradespersons	26.9	36.1	31.0	* 0.6	* 1.0	* 0.3	27.5	37.0	31.3
Electrical and electronics tradespersons	60.7	55.9	56.3	* 1.2	* 1.4	* 0.9	61.9	57.3	57.2
Building tradespersons	90.1	82.9	74.3	* 0.4	* 2.2	* 0.6	90.4	85.1	74.9
Printing tradespersons	8.3	8.8	9.0	* 1.8	* 1.2	* 1.5	10.1	10.0	10.5
Vehicle tradespersons	45.2	46.3	40.8	* 0.0	* 0.0	* 0.0	45.2	46.3	40.8
Food tradespersons	25.3	28.1	33.0	10.5	14.0	11.9	35.8	42.1	44.9
Amenity horticultural tradespersons	14.0	12.2	16.0	* 1.5	* 1.2	* 1.3	15.4	13.4	17.3
Miscellaneous tradespersons	30.4	25.0	28.2	19.0	19.5	16.3	49.4	44.4	44.6
<i>Clerks</i>	96.5	102.9	103.3	341.7	355.2	365.8	438.1	458.2	469.1
Stenographers and typists	* 1.3	* 0.6	* 1.6	82.9	94.2	97.4	84.2	94.8	99.0
Data processing and business machine operators	7.7	9.0	9.8	18.8	31.9	28.4	26.5	40.9	38.3
Numerical clerks	34.3	38.1	36.8	101.9	107.1	116.2	136.3	145.2	152.9
Filing, sorting and copying clerks	7.9	10.8	9.2	19.2	18.7	24.6	27.1	29.5	33.9
Material recording and despatching clerks	14.3	14.3	14.9	10.9	7.9	6.2	25.2	22.2	21.1
Receptionists, telephonists and messengers	10.9	11.3	12.0	69.9	67.4	61.8	80.8	78.7	73.7
Miscellaneous clerks	20.0	18.8	19.0	38.1	28.0	31.2	58.1	46.8	50.2
<i>Salespersons and personal service workers</i>	140.4	140.2	151.0	262.5	239.4	260.9	402.9	379.6	411.9
Investment, insurance and real estate salespersons	20.9	25.7	21.5	7.1	7.5	6.2	28.0	33.2	27.7
Sales representatives	33.5	28.6	28.3	12.2	9.5	13.0	45.7	38.1	41.2
Sales assistants	46.9	48.5	62.7	113.3	102.8	118.8	160.3	151.3	181.5
Tellers, cashiers and ticket salespersons	9.2	6.4	8.9	44.3	32.7	34.7	53.5	39.1	43.5
Miscellaneous salespersons	26.0	25.2	24.2	42.2	43.9	43.4	68.2	69.1	67.6
Personal service workers	* 3.8	5.9	5.5	43.4	42.9	44.8	47.2	48.8	50.3
<i>Plant and machine operators, and drivers</i>	141.9	149.3	150.1	25.4	30.4	28.0	167.3	179.7	178.1
Road and rail transport drivers	80.3	81.4	80.4	5.4	7.2	7.4	85.7	88.6	87.9
Mobile plant operators (except transport)	31.2	31.4	32.2	* 0.3	* 0.3	* 0.3	31.5	31.7	32.5
Stationary plant operators	10.6	16.1	17.0	* 0.6	* 0.8	* 0.6	11.2	16.8	17.6
Machine operators	19.9	20.4	20.4	19.0	22.1	19.7	38.9	42.5	40.1
<i>Labourers and related workers</i>	262.8	246.3	267.4	113.2	136.3	135.2	376.0	382.5	402.5
Trades assistants and factory hands	71.0	71.2	77.6	31.8	29.9	29.9	102.8	101.1	107.5
Agricultural labourers and related workers	25.2	28.1	30.2	8.6	10.5	8.0	33.8	38.6	38.2
Cleaners	28.4	21.5	22.7	34.7	40.4	43.9	63.1	61.9	66.6
Construction and mining labourers	40.0	38.7	48.1	* 0.0	* 0.3	* 0.3	40.0	39.0	48.4
Miscellaneous labourers and related workers	98.2	86.8	88.8	38.1	55.1	53.0	136.3	141.9	141.8
<b>Total employed</b>	<b>1,470.8</b>	<b>1,492.6</b>	<b>1,504.8</b>	<b>1,088.7</b>	<b>1,107.9</b>	<b>1,140.6</b>	<b>2,559.6</b>	<b>2,600.5</b>	<b>2,645.4</b>



ANNUAL CHANGE IN EMPLOYMENT BY OCCUPATION GROUP, NSW,  
MAY 1993 TO MAY 1994

Number



Proportion

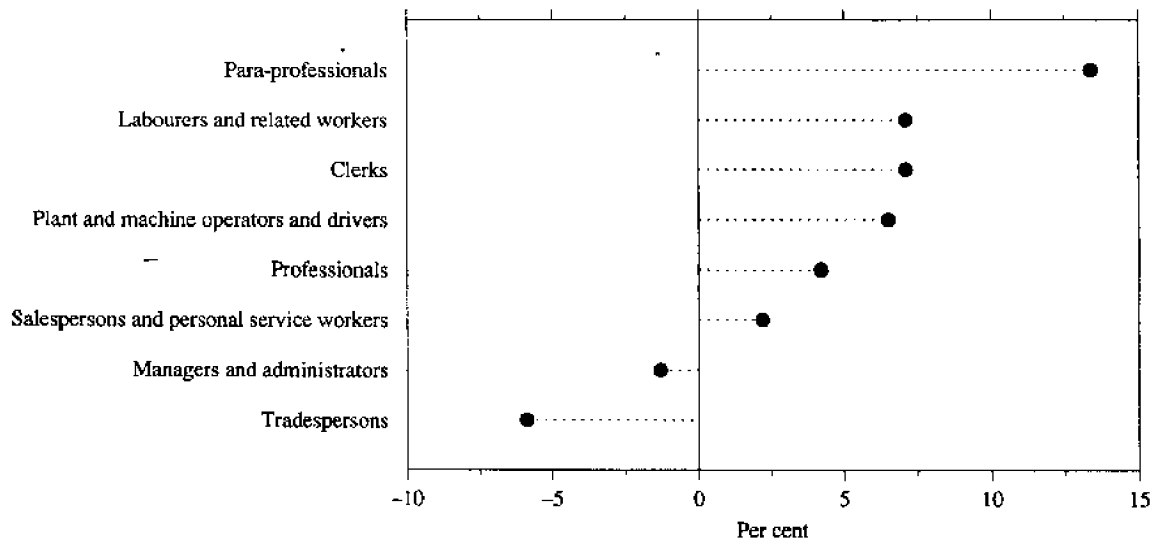


TABLE 10. UNEMPLOYED PERSONS: AGE, NSW  
(\*000)

Month	Age group (years)						Total unemployed
	15-19	20-24	25-34	35-44	45-54	55 and over	
MALES							
1993—							
May	21.5	34.8	49.2	35.9	25.1	20.3	186.8
1994—							
February	33.4	34.8	48.6	34.8	25.5	19.6	196.7
March	31.4	31.9	46.8	35.9	24.9	17.7	188.6
April	28.0	33.0	43.9	32.2	22.3	16.3	175.5
May	27.0	31.9	42.9	33.1	21.0	16.9	172.8
FEMALES							
1993—							
May	21.3	19.1	28.1	22.5	15.7	* 2.5	109.2
1994—							
February	27.5	23.5	30.9	24.0	19.7	* 4.2	129.8
March	28.0	22.7	26.6	24.3	15.2	* 4.7	121.6
April	22.3	22.0	25.2	26.1	14.9	* 4.5	115.0
May	22.4	20.4	25.5	15.8	14.8	* 4.6	103.5
PERSONS							
1993—							
May	42.8	53.8	77.4	58.4	40.8	22.8	296.0
1994—							
February	60.9	58.3	79.5	58.8	45.2	23.8	326.5
March	59.4	54.6	73.4	60.2	40.1	22.4	310.1
April	50.3	54.9	69.0	58.3	37.2	20.8	290.5
May	49.3	52.3	68.5	49.0	35.8	21.5	276.2

TABLE 11. UNEMPLOYED PERSONS: UNEMPLOYMENT RATE BY AGE, NSW  
(per cent)

Month	Age group (years)						Total unemployment rate
	15-19	20-24	25-34	35-44	45-54	55 and over	
MALES							
1993—							
May	19.5	16.8	11.4	8.6	7.9	11.7	11.3
1994—							
February	26.3	16.6	11.4	8.4	7.9	10.3	11.6
March	25.3	15.4	10.9	8.8	7.6	9.2	11.2
April	23.1	16.2	10.2	7.9	6.8	8.4	10.4
May	22.7	15.6	10.1	8.1	6.4	8.9	10.3
FEMALES							
1993—							
May	19.6	10.9	9.1	7.2	7.0	* 3.5	9.1
1994—							
February	24.5	12.9	9.7	7.9	8.4	* 4.9	10.5
March	23.8	12.1	8.4	7.9	6.4	5.3	9.7
April	20.0	11.9	8.0	8.5	6.3	5.3	9.3
May	19.9	11.2	8.1	5.1	6.1	5.4	8.3
PERSONS							
1993—							
May	19.6	14.1	10.5	8.0	7.5	9.3	10.4
1994—							
February	25.5	14.9	10.7	8.2	8.1	8.6	11.2
March	24.6	13.9	9.9	8.4	7.1	7.9	10.5
April	21.6	14.2	9.3	8.2	6.6	7.4	9.9
May	21.4	13.5	9.2	6.8	6.3	7.8	9.5

**TABLE 12. UNEMPLOYED PERSONS: INDUSTRY AND OCCUPATION OF LAST FULL-TIME JOB, NSW**  
(\*000)

	Males		Females		Persons		
	May 1993	May 1994	May 1993	May 1994	May 1993	February 1994	May 1994
<i>Had worked for two weeks or more in a full-time job in the last two years</i>	112.0	93.2	38.0	33.0	150.0	139.1	126.2
<b>Industry division—</b>							
Agriculture, forestry, fishing and hunting	* 5.1	* 4.5	* 1.3	* 1.4	6.4	7.2	5.9
Manufacturing	25.8	22.0	6.2	* 3.0	32.0	28.5	25.0
Construction	21.9	14.3	* 0.6	* 0.3	22.5	13.5	14.6
Wholesale and retail trade	21.3	23.3	10.1	11.3	31.4	34.0	34.6
Transport and storage	7.4	7.7	* 0.3	* 1.0	7.7	11.9	8.7
Finance property and business services	8.1	* 4.7	* 3.6	* 4.2	11.7	13.0	8.9
Community services	6.4	* 3.8	6.2	* 5.0	12.6	11.8	8.8
Recreation, personal and other services	7.9	5.6	7.5	5.6	15.4	10.5	11.2
Other industries (a)	8.2	7.3	* 2.1	* 1.2	10.3	8.8	8.5
<b>Major occupation group—</b>							
Managers and administrators	6.6	* 4.8	* 3.2	* 1.2	9.7	6.1	6.1
Professionals	6.5	5.7	* 3.1	* 3.8	9.6	7.5	9.4
Para-professionals	* 3.9	* 2.9	* 0.9	* 1.5	* 4.9	5.3	* 4.4
Tradespersons	31.1	24.6	* 1.6	* 1.9	32.7	25.1	26.5
Clerks	7.7	* 4.3	9.7	7.0	17.4	19.9	11.2
Salespersons and personal service workers	8.2	8.4	9.2	11.0	17.4	21.1	19.4
Plant and machine operators, and drivers	10.7	13.9	* 1.9	* 0.3	12.6	14.5	14.2
Labourers and related workers	37.3	28.7	8.4	6.3	45.7	39.6	34.9
<i>Had not worked full-time for two weeks or more in the last two years</i>	72.8	78.5	69.1	67.0	141.9	181.4	145.5
Looking for first job	11.8	18.2	14.1	20.9	25.9	50.8	39.1
Had worked at some time in the past	61.0	60.2	55.0	46.1	116.0	130.5	106.4
<i>Stood down</i>	* 2.0	* 1.1	* 2.1	* 3.5	* 4.1	6.0	* 4.6
<b>Total unemployed</b>	<b>186.8</b>	<b>172.8</b>	<b>109.2</b>	<b>103.5</b>	<b>296.0</b>	<b>326.5</b>	<b>276.2</b>

(a) Comprises Mining: Electricity, gas and water: Communication; and Public administration and defence.

**UNEMPLOYMENT RATE BY AGE, NSW**

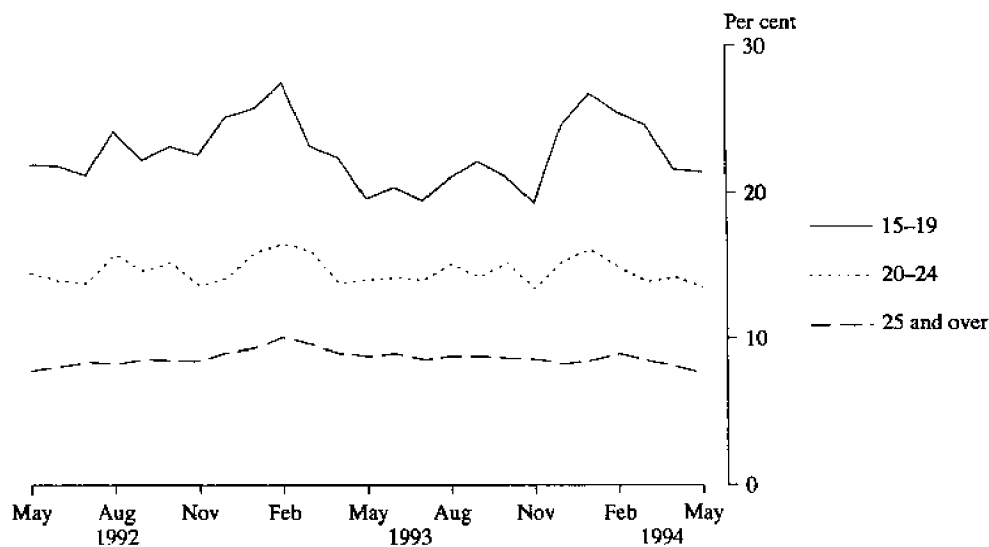


TABLE 13. UNEMPLOYED PERSONS: DURATION OF UNEMPLOYMENT, NSW

Duration of unemployment (weeks)	Males		Females		Persons				
	May 1993	May 1994	May 1993	May 1994	May 1993	February 1994	March 1994	April 1994	May 1994
	— '000 —								
Under 52	103.6	100.5	69.5	68.8	173.1	196.4	187.8	172.4	169.3
Under 2	5.8	7.3	6.1	* 4.9	11.8	17.0	16.7	17.4	12.2
2 and under 4	9.3	8.6	9.2	10.4	18.5	21.1	19.7	17.1	18.9
4 and under 8	11.9	10.7	7.7	9.8	19.5	36.3	30.9	21.4	20.5
8 and under 13	13.2	14.7	9.3	7.3	22.5	38.1	31.6	27.6	21.9
13 and under 26	32.7	36.4	21.2	22.5	53.9	41.6	49.2	54.9	58.9
26 and under 39	21.7	14.1	11.0	10.2	32.7	29.5	30.3	24.0	24.3
39 and under 52	9.2	8.8	* 4.9	* 3.8	14.1	12.9	9.4	10.0	12.6
52 and over	83.1	72.3	39.7	34.7	122.9	130.1	122.3	118.2	107.0
52 and under 104	41.6	30.3	18.9	18.0	60.6	61.4	52.2	50.0	48.3
104 and over	41.5	42.1	20.8	16.7	62.3	68.6	70.1	68.1	58.7
<b>Total unemployed</b>	<b>186.8</b>	<b>172.8</b>	<b>109.2</b>	<b>103.5</b>	<b>296.0</b>	<b>326.5</b>	<b>310.1</b>	<b>290.5</b>	<b>276.2</b>
	— Weeks —								
Average	67.3	72.1	59.2	48.9	64.3	61.2	62.5	65.2	63.4
Median	36	30	26	22	30	26	26	26	26

TABLE 14. UNEMPLOYED PERSONS: UNEMPLOYMENT RATE BY BIRTHPLACE AND PERIOD OF ARRIVAL, NSW (per cent)

	May 1993	February 1994	March 1994	April 1994	May 1994
Birthplace—					
Australia	9.7	10.7	10.0	9.1	8.5
Outside Australia	12.1	12.4	12.0	12.2	12.2
Main English speaking countries	8.4	8.3	6.3	7.3	7.3
Other countries	14.0	14.6	15.0	15.0	14.9
Period of arrival of overseas born—					
Before 1961	8.2	6.0	5.1	5.8	6.7
1961–1970	9.4	10.0	9.8	9.8	10.2
1971–1980	10.6	10.2	10.6	11.9	10.4
1981–1985	12.9	14.9	12.8	11.5	11.3
1986–1990	16.3	15.2	13.7	12.8	13.8
1991 to survey date	23.4	27.6	27.3	28.2	29.2
<b>Total unemployment rate</b>	<b>10.4</b>	<b>11.2</b>	<b>10.5</b>	<b>9.9</b>	<b>9.5</b>

UNEMPLOYMENT RATE BY PERIOD OF ARRIVAL OF OVERSEAS BORN, NSW, MAY 1994

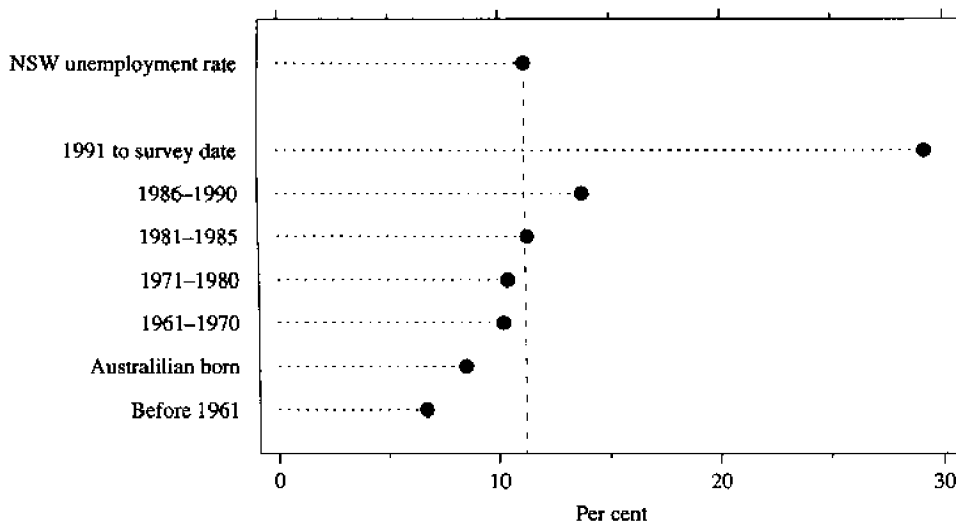


TABLE 15. UNEMPLOYED PERSONS: DURATION OF UNEMPLOYMENT BY AGE, NSW

Month	Duration of unemployment (weeks)					Total unemployed persons ('000)	Average duration (weeks)	Median duration (weeks)
	Under 13 ('000)	13 and under 26 ('000)	26 and under 39 ('000)	39 and under 104 ('000)	104 and over ('000)			
15-19								
1993—								
May	12.9	13.9	* 5.1	8.2	* 2.8	42.8	32.2	18
1994—								
March	25.9	15.7	* 4.9	8.6	* 4.4	59.4	26.9	14
April	17.0	18.8	* 2.5	8.1	* 4.0	50.3	28.7	16
May	17.8	16.7	5.8	6.9	* 2.0	49.3	26.3	18
20-24								
1993—								
May	15.5	11.1	6.1	11.6	9.4	53.8	54.2	26
1994—								
March	18.3	8.7	* 5.3	12.3	10.0	54.6	50.7	26
April	16.9	9.8	* 3.1	13.1	12.1	54.9	52.1	26
May	17.3	12.3	* 2.8	10.5	9.3	52.3	45.4	19
25-34								
1993—								
May	18.6	10.8	10.4	20.3	17.3	77.4	64.1	37
1994—								
March	25.7	8.1	8.7	12.4	18.5	73.4	63.0	26
April	21.6	14.3	6.6	11.1	15.4	69.0	63.8	22
May	17.4	12.9	7.4	16.7	14.1	68.5	62.9	31
35-44								
1993—								
May	11.2	10.2	5.7	17.4	13.9	58.4	72.2	48
1994—								
March	18.6	10.0	5.5	11.2	14.9	60.2	71.4	26
April	15.5	8.1	6.5	14.7	13.5	58.3	71.5	34
May	10.0	12.0	* 3.1	12.9	10.9	49.0	73.0	30
45 AND OVER								
1993—								
May	14.2	7.9	5.3	17.2	19.0	63.6	87.4	52
1994—								
March	10.5	6.7	5.8	17.1	22.4	62.5	97.4	56
April	12.5	* 4.0	* 5.3	13.0	23.2	57.9	104.4	56
May	11.0	* 4.9	* 5.1	13.8	22.4	57.2	104.2	52
TOTAL								
1993—								
May	72.4	53.9	32.7	74.7	62.3	296.0	64.3	30
1994—								
March	99.0	49.2	30.3	61.6	70.1	310.1	62.5	26
April	83.5	54.9	24.0	60.0	68.1	290.5	65.2	26
May	73.5	58.9	24.3	60.8	58.7	276.2	63.4	26

TABLE 16. LABOUR FORCE STATUS, SYDNEY (MSR)

Month	Employed		Unemployed			Labour force ('000)	Not in labour force ('000)	Civilian population aged 15 and over ('000)	Unemployment rate (per cent)	Participation rate (per cent)	
	Full-time workers ('000)	Part-time workers ('000)	Total ('000)	Looking for full-time work ('000)	Looking for part-time work ('000)						
MALES											
May—											
1990	927.7	81.3	1,009.0	49.1	5.5	54.5	1,063.6	341.5	1,405.0	5.1	75.7
1991	904.8	85.6	990.4	74.2	9.2	83.4	1,073.8	346.4	1,420.1	7.8	75.6
1992	879.8	89.4	969.2	90.8	7.8	98.5	1,067.7	368.8	1,436.5	9.2	74.3
1993—											
March	863.5	86.9	950.4	103.8	11.6	115.4	1,065.8	381.5	1,447.3	10.8	73.6
April	855.5	88.2	943.7	96.2	12.3	108.5	1,052.2	395.9	1,448.2	10.3	72.7
May	851.5	95.3	946.8	101.9	10.0	111.9	1,058.7	390.3	1,449.1	10.6	73.1
1994—											
February	884.7	94.6	979.3	102.1	11.8	113.9	1,093.2	365.6	1,458.8	10.4	74.9
March	877.1	107.0	984.1	93.6	12.7	106.3	1,090.4	369.4	1,459.8	9.7	74.7
April	879.8	104.6	984.4	94.5	8.6	103.0	1,087.4	373.7	1,461.1	9.5	74.4
May	876.7	101.1	977.8	92.5	9.7	102.2	1,080.0	382.4	1,462.4	9.5	73.8
MARRIED FEMALES											
May—											
1990	236.9	179.2	416.1	11.2	6.9	18.2	434.3	372.6	806.9	4.2	53.8
1991	241.4	171.4	412.8	19.2	9.7	28.8	441.6	378.0	819.7	6.5	53.9
1992	234.8	178.0	412.8	19.2	8.2	27.3	440.1	381.3	821.5	6.2	53.6
1993—											
March	239.9	167.1	407.0	24.2	13.1	37.3	444.3	385.8	830.1	8.4	53.5
April	235.5	157.1	392.6	19.7	11.9	31.5	424.2	400.2	824.4	7.4	51.4
May	241.3	169.3	410.6	20.9	8.1	29.1	439.6	389.9	829.5	6.6	53.0
1994—											
February	259.5	174.6	434.1	21.5	11.0	32.5	466.6	369.5	836.1	7.0	55.8
March	267.6	175.8	443.4	19.2	8.8	28.0	471.5	379.4	850.8	5.9	55.4
April	265.0	173.6	438.6	16.9	10.2	27.1	465.7	382.2	847.9	5.8	54.9
May	265.6	184.9	450.5	19.7	8.2	27.9	478.4	369.8	848.2	5.8	56.4
ALL FEMALES											
May—											
1990	479.3	262.2	741.5	28.2	15.4	43.6	785.1	679.4	1,464.5	5.6	53.6
1991	480.5	253.2	733.7	39.5	17.3	56.8	790.5	691.0	1,481.5	7.2	53.4
1992	467.2	258.7	719.8	47.8	20.5	68.4	788.2	710.8	1,499.0	8.7	52.6
1993—											
March	465.2	252.0	717.2	56.7	24.8	81.5	798.7	711.1	1,509.8	10.2	52.9
April	468.1	236.6	704.7	45.9	22.1	68.0	772.7	738.1	1,510.9	8.8	51.1
May	465.1	256.0	721.1	45.9	19.8	65.7	786.8	725.1	1,511.9	8.4	52.0
1994—											
February	488.8	262.4	751.2	53.6	23.1	76.8	827.9	694.0	1,522.0	9.3	54.4
March	497.1	270.8	768.0	50.9	19.8	70.6	838.6	684.4	1,523.0	8.4	55.1
April	487.6	276.7	764.3	45.7	20.4	66.1	830.4	694.0	1,524.4	8.0	54.5
May	482.5	292.5	774.9	43.6	18.1	61.7	836.6	689.2	1,525.8	7.4	54.8
PERSONS											
May—											
1990	1,407.0	343.5	1,750.5	77.3	20.9	98.1	1,848.6	1,020.9	2,869.5	5.3	64.4
1991	1,385.3	338.9	1,724.1	113.7	26.4	140.2	1,864.3	1,037.4	2,901.7	7.5	64.2
1992	1,341.0	348.0	1,689.0	138.6	28.3	166.9	1,855.9	1,079.6	2,935.5	9.0	63.2
1993—											
March	1,328.7	338.9	1,667.6	160.4	36.5	196.9	1,864.5	1,092.6	2,957.1	10.6	63.1
April	1,323.7	324.8	1,648.4	142.1	34.4	176.5	1,825.0	1,134.1	2,959.0	9.7	61.7
May	1,316.6	351.3	1,667.9	147.8	29.8	177.7	1,845.5	1,115.5	2,961.0	9.6	62.3
1994—											
February	1,373.5	357.0	1,730.5	155.7	34.9	190.7	1,921.1	1,059.6	2,980.7	9.9	64.5
March	1,374.2	377.9	1,752.1	144.4	32.5	176.9	1,929.0	1,053.8	2,982.8	9.2	64.7
April	1,367.4	381.3	1,748.7	140.2	28.9	169.1	1,917.8	1,067.7	2,985.5	8.8	64.2
May	1,359.2	393.6	1,752.8	136.0	27.8	163.8	1,916.6	1,071.6	2,988.2	8.5	64.1

TABLE 17. LABOUR FORCE STATUS, BALANCE OF NSW (MSR)

Month	Employed			Unemployed			Labour force ('000)	Not in labour force ('000)	Civilian population aged 15 and over ('000)	Unemployment rate (per cent)	Participation rate (per cent)
	Full-time workers ('000)	Part-time workers ('000)	Total ('000)	Looking for full-time work ('000)	Looking for part-time work ('000)	Total ('000)					
MALES											
May—											
1990	507.7	43.7	551.4	38.3	* 3.7	42.0	593.4	235.3	828.8	7.1	71.6
1991	506.2	45.2	551.4	57.1	6.3	63.3	614.7	225.4	840.1	10.3	73.2
1992	478.7	57.8	536.5	72.1	* 3.9	75.9	612.4	236.3	848.7	12.4	72.2
1993—											
March	458.5	53.3	511.8	76.6	5.5	82.1	594.0	261.0	854.9	13.8	69.5
April	455.5	56.0	511.6	76.2	6.2	82.5	594.1	261.4	855.5	13.9	69.4
May	471.6	52.4	524.0	71.3	* 3.6	74.8	598.9	257.2	856.1	12.5	70.0
1994—											
February	459.5	53.9	513.4	77.7	* 5.1	82.8	596.2	266.2	862.4	13.9	69.1
March	463.7	53.0	516.7	77.2	* 5.1	82.3	599.0	264.1	863.1	13.7	69.4
April	468.7	53.7	522.3	70.5	* 2.0	72.5	594.8	268.9	863.8	12.2	68.9
May	475.7	51.3	527.0	67.5	* 3.1	70.6	597.6	266.9	864.5	11.8	69.1
MARRIED FEMALES											
May—											
1990	115.6	116.2	231.8	9.4	5.4	14.9	246.6	278.3	524.9	6.0	47.0
1991	123.3	121.5	244.8	11.2	* 4.4	15.6	260.4	272.9	533.3	6.0	48.8
1992	123.6	124.1	247.7	11.6	* 4.4	17.9	265.6	261.3	526.9	6.7	50.4
1993—											
March	122.6	116.8	239.4	14.2	* 4.3	18.4	257.9	259.9	517.7	7.1	49.8
April	122.9	115.0	237.8	14.1	* 4.3	18.4	256.2	254.1	510.3	7.2	50.2
May	119.4	120.2	239.6	10.7	* 4.0	14.7	254.4	254.3	508.7	5.8	50.0
1994—											
February	132.3	109.3	241.6	17.3	* 5.1	22.4	264.0	280.9	544.9	8.5	48.5
March	129.5	114.5	244.1	13.3	* 3.9	17.2	261.3	273.9	535.2	6.6	48.8
April	132.0	110.2	242.2	13.7	* 4.5	18.2	260.4	275.5	535.8	7.0	48.6
May	132.8	115.0	247.8	10.8	* 3.5	14.4	262.1	281.4	543.6	5.5	48.2
ALL FEMALES											
May—											
1990	194.4	153.3	347.7	25.0	10.6	35.5	383.2	459.4	842.6	9.3	45.5
1991	196.3	169.4	365.8	28.5	9.8	38.3	404.1	451.6	855.6	9.5	47.2
1992	203.9	175.6	379.5	30.2	10.6	40.8	420.4	445.7	866.1	9.7	48.5
1993—											
March	193.6	162.0	355.6	37.1	13.7	50.8	406.4	467.1	873.5	12.5	46.5
April	195.9	165.1	361.0	34.0	9.3	43.3	404.3	470.0	874.3	10.7	46.2
May	196.7	171.0	367.7	32.6	10.9	43.5	411.2	463.9	875.1	10.6	47.0
1994—											
February	198.7	158.0	356.7	41.7	11.3	53.0	409.7	472.8	882.5	12.9	46.4
March	194.5	169.7	364.2	37.6	13.3	50.9	415.1	468.3	883.3	12.3	47.0
April	196.1	163.3	359.4	37.4	11.5	48.9	408.3	476.0	884.3	12.0	46.2
May	199.8	165.8	365.6	30.8	11.0	41.8	407.4	477.9	885.3	10.3	46.0
PERSONS											
May—											
1990	702.1	197.0	899.1	63.3	14.2	77.6	976.7	694.7	1,671.4	7.9	58.4
1991	702.5	214.6	917.2	85.6	16.0	101.6	1,018.8	677.0	1,695.8	10.0	60.1
1992	682.6	233.4	916.0	102.3	14.5	116.8	1,032.8	682.0	1,714.8	11.3	60.2
1993—											
March	652.1	215.4	867.4	113.7	19.3	133.0	1,000.4	728.1	1,728.5	13.3	57.9
April	651.5	221.1	872.6	110.2	15.5	125.8	998.4	731.5	1,729.8	12.6	57.7
May	668.3	223.4	891.7	103.9	14.5	118.3	1,010.0	721.2	1,731.2	11.7	58.3
1994—											
February	658.2	211.8	870.1	119.4	16.5	135.9	1,005.9	738.9	1,744.9	13.5	57.6
March	658.2	222.7	880.9	114.8	18.4	133.2	1,014.1	732.3	1,746.4	13.1	58.1
April	664.7	217.0	881.7	107.9	13.5	121.4	1,003.2	744.9	1,748.1	12.1	57.4
May	675.5	217.1	892.6	98.3	14.1	112.4	1,005.0	744.8	1,749.8	11.2	57.4

TABLE 18. LABOUR FORCE STATUS, REGIONS OF NSW

Month	Employed		Unemployed			Labour force ('000)	Not in labour force ('000)	Unemployment rate (per cent)	Participation rate (per cent)	
	Full-time workers ('000)	Part-time workers ('000)	Total ('000)	Looking for full-time work ('000)	Total ('000)					
INNER SYDNEY AND INNER WESTERN SYDNEY (SRs)										
MALES	1993— May	85.9	13.0	98.9	13.8	15.1	113.9	49.4	13.2	69.8
	1994— March	93.1	12.3	105.4	8.8	9.7	115.1	46.4	8.4	71.2
	April	94.2	11.8	105.9	10.3	11.2	117.2	45.3	9.6	72.1
	May	94.4	11.5	105.9	10.3	12.2	118.0	47.8	10.3	71.2
FEMALES	1993— May	62.1	17.7	79.8	4.9	6.1	85.9	77.0	7.1	52.7
	1994— March	68.5	23.9	92.4	7.1	9.0	101.4	70.4	8.9	59.0
	April	66.1	21.6	87.7	7.4	9.3	97.1	68.9	9.6	58.5
	May	62.3	24.9	87.3	7.3	8.5	95.8	72.9	8.9	56.8
PERSONS	1993— May	148.0	30.6	178.6	18.8	21.1	199.8	126.4	10.6	61.3
	1994— March	161.5	36.2	197.7	15.9	18.7	216.4	116.8	8.6	65.0
	April	160.3	33.4	193.7	17.7	20.6	214.3	114.2	9.6	65.2
	May	156.7	36.4	193.1	17.6	20.7	213.8	120.7	9.7	63.9
INNER SYDNEY (SR)										
MALES	1993— May	55.5	6.9	62.4	7.7	8.7	71.1	33.0	12.2	68.3
	1994— March	60.7	8.2	68.9	5.1	5.4	74.3	28.3	7.3	72.4
	April	60.3	9.3	69.5	5.2	5.8	75.4	28.5	7.7	72.6
	May	59.9	7.5	67.4	6.8	7.8	75.2	28.1	10.4	72.8
FEMALES	1993— May	41.1	11.0	52.1	* 2.5	* 3.0	55.1	49.1	* 5.5	52.9
	1994— March	44.5	13.8	58.3	5.3	6.5	64.9	39.0	10.1	62.4
	April	40.5	11.0	51.4	4.9	6.5	58.0	37.1	11.3	61.0
	May	37.1	14.7	51.8	5.8	6.7	58.4	38.5	11.4	60.3
PERSONS	1993— May	96.7	17.8	114.5	10.2	11.7	126.2	82.1	9.3	60.6
	1994— March	105.2	22.0	127.2	10.3	11.9	139.1	67.4	8.6	67.4
	April	100.7	20.2	121.0	10.2	12.4	133.3	65.6	9.3	67.0
	May	97.0	22.2	119.2	12.6	14.5	133.6	66.6	10.8	66.7
EASTERN SUBURBS (SR)										
MALES	1993— May	51.2	8.6	59.8	4.4	5.7	65.4	30.3	8.7	68.4
	1994— March	50.0	8.1	58.0	6.9	8.4	66.4	26.1	12.6	71.8
	April	54.7	8.4	63.1	7.2	8.2	71.3	26.6	11.5	72.8
	May	55.2	8.3	63.5	5.4	6.0	69.5	30.1	8.6	69.8
FEMALES	1993— May	38.5	16.8	55.2	* 3.1	3.8	59.0	51.1	6.4	53.6
	1994— March	39.5	17.6	57.1	3.8	3.8	60.9	41.4	6.2	59.5
	April	42.3	17.5	59.9	* 2.5	* 2.8	62.6	40.8	* 4.5	60.6
	May	37.9	14.4	52.2	* 1.2	* 2.1	54.4	43.8	* 3.9	55.4
PERSONS	1993— May	89.7	25.3	115.0	7.6	9.5	124.5	81.3	7.6	60.5
	1994— March	89.5	25.7	115.2	10.6	12.1	127.3	67.5	9.5	65.3
	April	97.0	26.0	123.0	9.7	11.0	134.0	67.4	8.2	66.5
	May	93.1	22.7	115.7	6.6	8.1	123.8	74.0	6.5	62.6



TABLE 18. LABOUR FORCE STATUS, REGIONS OF NSW—continued

Month	Employed		Unemployed			Labour force ('000)	Not in labour force ('000)	Unemployment rate (per cent)	Participation rate (per cent)	
	Full-time workers ('000)	Part-time workers ('000)	Total ('000)	Looking for full-time work ('000)	Total ('000)					
ST GEORGE—SUTHERLAND (SR)										
MALES	1993—									
	May	103.5	12.2	115.7	10.1	11.7	127.4	36.8	9.2	77.6
	1994—									
	March	108.6	11.4	120.0	8.1	9.1	129.1	39.4	7.1	76.6
	April	108.9	10.3	119.2	6.3	7.1	126.3	41.7	5.6	75.2
	May	107.2	11.3	118.4	5.1	5.1	123.5	43.0	4.1	74.2
FEMALES	1993—									
	May	53.8	33.7	87.5	* 2.6	6.1	93.6	77.3	6.5	54.8
	1994—									
	March	60.2	35.5	95.7	4.2	7.8	103.5	66.3	7.5	61.0
	April	58.7	37.2	95.9	3.5	7.0	102.9	74.7	6.8	57.9
	May	57.8	40.7	98.5	3.5	5.5	103.9	77.2	5.2	57.4
PERSONS	1993—									
	May	157.3	45.9	203.2	12.6	17.8	221.0	114.1	8.1	66.0
	1994—									
	March	168.8	46.9	215.7	12.3	16.9	232.7	105.7	7.3	68.8
	April	167.6	47.5	215.1	9.8	14.0	229.1	116.3	6.1	66.3
	May	164.9	52.0	216.9	8.5	10.5	227.4	120.3	4.6	65.4
CANTERBURY—BANKSTOWN (SR)										
MALES	1993—									
	May	68.3	5.8	74.1	12.1	12.5	86.6	33.8	14.4	71.9
	1994—									
	March	70.9	7.2	78.1	12.6	13.2	91.3	29.6	14.5	75.5
	April	70.2	8.9	79.1	13.0	13.9	93.1	25.8	15.0	78.3
	May	69.5	6.3	75.9	13.2	13.8	89.7	27.6	15.4	76.4
FEMALES	1993—									
	May	34.2	13.8	48.0	5.0	5.6	53.6	62.8	10.4	46.0
	1994—									
	March	37.7	18.6	56.3	5.2	6.8	63.1	56.0	10.8	53.0
	April	39.3	20.4	59.7	4.6	7.7	67.4	50.5	11.5	57.2
	May	37.4	20.7	58.1	3.8	6.1	64.2	54.0	9.5	54.3
PERSONS	1993—									
	May	102.5	19.5	122.1	17.1	18.1	140.1	96.5	12.9	59.2
	1994—									
	March	108.6	25.8	134.4	17.8	20.1	154.5	85.6	13.0	64.3
	April	109.5	29.3	138.8	17.6	21.7	160.5	76.3	13.5	67.8
	May	106.9	27.0	134.0	17.0	19.9	153.9	81.6	12.9	65.3
FAIRFIELD—LIVERPOOL AND OUTER SOUTH WESTERN SYDNEY (SRs)										
MALES	1993—									
	May	123.6	10.7	134.3	19.1	20.9	155.2	37.5	13.5	80.5
	1994—									
	March	120.7	11.8	132.5	17.0	18.3	150.7	45.1	12.1	77.0
	April	123.5	10.9	134.4	17.1	18.9	153.4	44.2	12.4	77.6
	May	121.1	10.4	131.5	19.1	21.3	152.8	40.7	13.9	79.0
FEMALES	1993—									
	May	50.6	36.9	87.4	11.1	14.6	102.1	79.9	14.3	56.1
	1994—									
	March	54.4	33.6	88.0	11.9	14.6	102.6	89.8	14.3	53.3
	April	56.6	32.2	88.8	11.6	14.3	103.1	91.1	13.9	53.1
	May	55.5	35.5	90.9	11.3	13.1	104.0	88.6	12.6	54.0
PERSONS	1993—									
	May	174.2	47.5	221.7	30.2	35.6	257.2	117.5	13.8	68.6
	1994—									
	March	175.1	45.4	220.5	29.0	32.9	253.4	135.0	13.0	65.2
	April	180.1	43.1	223.2	28.7	33.3	256.5	135.3	13.0	65.5
	May	176.6	45.9	222.4	30.3	34.3	256.8	129.3	13.4	66.5

TABLE 18. LABOUR FORCE STATUS, REGIONS OF NSW—continued

Month	Employed		Unemployed			Labour force ('000)	Not in labour force ('000)	Unemployment rate (per cent)	Participation rate (per cent)	
	Full-time workers ('000)	Part-time workers ('000)	Total ('000)	Looking for full-time work ('000)	Total ('000)					
FAIRFIELD-LIVERPOOL (SR)										
MALES	1993— May	76.6	7.5	84.1	15.3	16.5	100.6	22.1	16.4	82.0
	1994— March	69.4	5.3	74.7	13.3	14.2	89.0	31.1	16.0	74.1
	April	69.9	5.7	75.6	13.2	14.4	90.0	32.2	16.0	73.6
	May	67.1	4.7	71.8	16.2	17.5	89.4	28.6	19.6	75.8
FEMALES	1993— May	30.1	18.5	48.6	8.4	11.1	59.7	51.3	18.7	53.8
	1994— March	34.1	18.0	52.1	8.5	10.0	62.1	56.5	16.1	52.4
	April	34.6	17.5	52.1	8.1	10.3	62.4	58.4	16.4	51.6
	May	34.2	16.2	50.3	9.4	10.9	61.2	55.6	17.8	52.4
PERSONS	1993— May	106.6	26.0	132.7	23.7	27.6	160.3	73.4	17.2	68.6
	1994— March	103.5	23.3	126.8	21.8	24.2	151.1	87.5	16.0	63.3
	April	104.5	23.2	127.8	21.3	24.7	152.4	90.6	16.2	62.7
	May	101.3	20.9	122.2	25.6	28.4	150.6	84.2	18.9	64.1
CENTRAL WESTERN SYDNEY (SR)										
MALES	1993— May	46.7	6.4	53.1	6.9	6.9	60.0	37.7	11.5	61.4
	1994— March	43.8	7.5	51.3	9.3	9.9	61.3	29.2	16.2	67.7
	April	47.6	6.1	53.7	10.2	10.5	64.2	31.9	16.3	66.8
	May	46.5	8.9	55.5	9.5	9.5	64.9	33.6	14.6	65.9
FEMALES	1993— May	25.5	11.2	36.7	4.3	5.9	42.6	58.9	13.9	42.0
	1994— March	27.0	11.2	38.2	4.6	6.2	44.4	55.9	14.0	44.3
	April	27.4	10.9	38.3	* 3.1	6.1	44.4	55.9	13.8	44.3
	May	27.3	13.0	40.3	5.8	7.4	47.7	58.0	15.5	45.1
PERSONS	1993— May	72.2	17.6	89.8	11.2	12.8	102.6	96.5	12.5	51.5
	1994— March	70.8	18.7	89.5	13.9	16.2	105.7	85.1	15.3	55.4
	April	75.0	17.0	92.0	13.3	16.6	108.6	87.9	15.3	55.3
	May	73.9	21.9	95.8	15.3	16.8	112.6	91.5	15.0	55.2
OUTER WESTERN SYDNEY (SR)										
MALES	1993— May	69.5	4.4	73.9	6.3	7.2	81.1	24.4	8.9	76.9
	1994— March	66.7	6.7	73.4	6.7	7.6	81.1	23.8	9.4	77.3
	April	64.1	6.6	70.8	6.8	6.8	77.5	27.3	8.8	73.9
	May	65.0	4.9	70.0	7.3	7.3	77.3	26.5	9.5	74.5
FEMALES	1993— May	27.4	21.6	49.0	* 2.5	* 3.1	52.1	55.9	* 5.9	48.2
	1994— March	35.9	19.0	54.8	4.2	5.7	60.6	50.8	9.5	54.4
	April	33.9	19.2	53.1	* 3.5	5.3	58.4	53.8	9.1	52.1
	May	33.6	25.9	59.5	* 3.4	5.1	64.6	50.8	7.8	56.0
PERSONS	1993— May	96.9	25.9	122.9	8.8	10.3	133.2	80.3	7.7	62.4
	1994— March	102.6	25.7	128.3	10.9	13.4	141.7	74.5	9.4	65.5
	April	98.0	25.9	123.8	10.3	12.1	135.9	81.1	8.9	62.6
	May	98.6	30.8	129.4	10.7	12.4	141.8	77.3	8.7	64.7

TABLE 18. LABOUR FORCE STATUS, REGIONS OF NSW—continued

Month	Employed		Unemployed			Labour force ('000)	Not in labour force ('000)	Unemployment rate (per cent)	Participation rate (per cent)	
	Full-time workers ('000)	Part-time workers ('000)	Total ('000)	Looking for full-time work ('000)	Total ('000)					
BLACKTOWN–BAULKHAM HILLS (SR)										
MALES	1993—									
	May	83.9	5.1	89.0	9.5	10.1	99.2	30.3	10.2	76.6
	1994—									
	March	85.6	6.3	91.8	6.5	8.1	99.9	32.0	8.1	75.8
	April	80.0	7.8	87.8	6.4	6.7	94.5	31.1	7.1	75.2
	May	83.1	6.7	89.8	6.1	7.3	97.1	31.5	7.5	75.5
FEMALES	1993—									
	May	40.7	21.7	62.4	5.7	7.1	69.5	67.8	10.3	50.6
	1994—									
	March	44.4	25.5	69.8	3.5	5.4	75.2	61.8	7.1	54.9
	April	42.9	26.3	69.2	3.9	4.2	73.3	60.7	5.7	54.7
	May	46.6	28.9	75.5	2.9	3.5	79.1	56.9	4.5	58.1
PERSONS	1993—									
	May	124.6	26.8	151.4	15.2	17.3	168.7	98.1	10.2	63.2
	1994—									
	March	129.9	31.7	161.7	10.0	13.4	175.1	93.7	7.7	65.1
	April	122.9	34.1	156.9	10.3	10.9	167.8	91.9	6.5	64.6
	May	129.7	35.6	165.3	9.1	10.8	176.2	88.4	6.1	66.6
LOWER NORTHERN SYDNEY (SR)										
MALES	1993—									
	May	60.5	8.0	68.5	4.9	5.3	73.8	27.9	7.2	72.6
	1994—									
	March	67.9	8.7	76.6	* 3.8	4.9	81.5	28.1	6.0	74.4
	April	65.8	8.4	74.2	* 2.9	* 3.5	77.7	30.1	* 4.5	72.1
	May	67.4	6.9	74.3	* 3.8	* 4.2	78.5	30.1	* 5.4	72.3
FEMALES	1993—									
	May	43.1	21.2	64.2	* 1.8	* 4.5	68.7	51.5	* 6.5	57.1
	1994—									
	March	47.3	21.7	68.9	* 1.2	* 2.7	71.7	47.2	* 3.8	60.3
	April	42.1	23.3	65.3	* 2.0	* 2.6	67.9	50.9	* 3.8	57.1
	May	40.1	24.3	64.4	* 2.0	* 3.0	67.3	49.3	* 4.4	57.7
PERSONS	1993—									
	May	103.5	29.2	132.7	6.8	9.8	142.5	79.4	6.8	64.2
	1994—									
	March	115.2	30.3	145.5	5.0	7.6	153.2	75.3	5.0	67.0
	April	107.9	31.6	139.5	4.9	6.1	145.6	81.1	4.2	64.2
	May	107.5	31.1	138.6	5.8	7.2	145.8	79.4	4.9	64.7
HORNSBY–KU-RING-GAI (SR)										
MALES	1993—									
	May	53.3	9.2	62.4	4.1	4.8	67.2	26.4	7.1	71.8
	1994—									
	March	57.9	10.6	68.5	* 3.3	4.2	72.7	25.1	5.7	74.3
	April	58.1	9.0	67.0	* 3.2	4.2	71.2	23.0	5.9	75.6
	May	58.6	8.5	67.1	* 2.9	5.5	72.6	23.3	7.6	75.7
FEMALES	1993—									
	May	33.3	18.9	52.3	* 0.8	* 2.8	55.1	50.9	* 5.1	52.0
	1994—									
	March	31.7	22.3	53.9	* 0.9	* 1.6	55.5	55.1	* 2.9	50.2
	April	28.2	26.2	54.4	* 0.3	* 0.6	55.0	52.1	* 1.1	51.4
	May	30.2	25.3	55.5	* 0.3	* 1.5	57.0	48.4	* 2.6	54.1
PERSONS	1993—									
	May	86.6	28.1	114.7	4.9	7.6	122.3	77.4	6.2	61.3
	1994—									
	March	89.6	32.8	122.5	4.2	5.8	128.2	80.2	4.5	61.5
	April	86.2	35.2	121.4	* 3.5	4.8	126.2	75.0	3.8	62.7
	May	88.9	33.8	122.6	* 3.2	7.0	129.7	71.7	5.4	64.4

TABLE 18. LABOUR FORCE STATUS, REGIONS OF NSW—continued

Month	Employed		Unemployed			Labour force ('000)	Not in labour force ('000)	Unemployment rate (per cent)	Participation rate (per cent)	
	Full-time workers ('000)	Part-time workers ('000)	Total ('000)	Looking for full-time work ('000)	Total ('000)					
NORTHERN BEACHES (SR) (a)										
MALES	1993— May	57.3	6.0	63.3	* 0.7	* 1.0	64.2	20.0	* 1.5	76.3
	1994— March	59.5	7.9	67.4	4.8	5.7	73.2	17.6	7.8	80.6
	April	58.7	7.6	66.3	4.7	5.3	71.6	17.9	7.4	80.0
	May	57.8	8.7	66.5	3.2	3.2	69.7	18.3	4.6	79.2
FEMALES	1993— May	36.3	19.7	56.0	* 0.6	* 1.5	57.5	36.7	* 2.7	61.1
	1994— March	32.0	22.5	54.5	2.3	2.9	57.3	39.6	5.0	59.1
	April	31.2	21.3	52.5	* 0.9	* 1.8	54.3	41.4	* 3.4	56.8
	May	33.9	18.6	52.5	* 0.9	* 1.9	54.4	39.1	* 3.5	58.2
PERSONS	1993— May	93.5	25.7	119.3	* 1.3	2.5	121.8	56.6	2.1	68.3
	1994— March	91.4	30.4	121.9	7.0	8.6	130.5	57.3	6.6	69.5
	April	89.9	28.9	118.8	5.6	7.1	125.9	59.3	5.7	68.0
	May	91.7	27.3	119.0	4.2	5.1	124.1	57.4	4.1	68.4
GOSFORD-WYONG (SR)										
MALES	1993— May	47.9	6.1	53.9	9.9	10.8	64.8	35.9	16.7	64.3
	1994— March	52.4	8.6	61.0	5.8	7.1	68.1	26.9	10.4	71.7
	April	54.0	8.8	62.8	6.4	6.7	69.5	28.6	9.6	70.9
	May	50.8	8.7	59.5	6.5	6.8	66.3	29.9	10.3	68.9
FEMALES	1993— May	19.6	23.0	42.6	* 3.4	4.5	47.0	55.3	9.5	46.0
	1994— March	18.6	19.7	38.3	* 1.9	4.1	42.4	50.1	9.7	45.8
	April	19.1	20.6	39.7	* 2.4	4.2	43.9	53.3	9.6	45.2
	May	20.0	20.3	40.3	* 1.2	4.0	44.3	50.1	9.1	46.9
PERSONS	1993— May	67.5	29.0	96.5	13.3	15.3	111.8	91.2	13.7	55.1
	1994— March	71.1	28.2	99.3	7.6	11.2	110.5	77.0	10.1	58.9
	April	73.1	29.4	102.5	8.8	10.9	113.4	81.9	9.6	58.1
	May	70.8	29.0	99.8	7.7	10.9	110.6	80.1	9.8	58.0
HUNTER (SR)										
MALES	1993— May	99.2	11.4	110.6	21.5	22.8	133.5	66.3	17.1	66.8
	1994— March	109.5	14.0	123.5	24.9	27.3	150.8	65.4	18.1	69.7
	April	104.4	12.9	117.3	18.6	18.9	136.2	67.6	13.8	66.8
	May	108.5	11.2	119.8	17.3	17.6	137.4	67.2	12.8	67.2
FEMALES	1993— May	45.6	35.4	81.0	8.5	10.6	91.6	124.2	11.6	42.4
	1994— March	45.3	48.8	94.1	10.6	13.9	108.0	115.5	12.9	48.3
	April	46.5	41.2	87.7	8.8	13.1	100.8	119.6	13.0	45.7
	May	44.4	43.8	88.3	8.0	11.3	99.6	118.5	11.4	45.7
PERSONS	1993— May	144.8	46.8	191.6	30.1	33.4	225.0	190.5	14.9	54.2
	1994— March	154.8	62.8	217.6	35.5	41.2	258.8	180.9	15.9	58.9
	April	151.0	54.1	205.1	27.4	32.0	237.0	187.2	13.5	55.9
	May	152.9	55.1	208.0	25.3	29.0	237.0	185.7	12.2	56.1

TABLE 18. LABOUR FORCE STATUS, REGIONS OF NSW—continued

Month	Employed		Unemployed			Labour force ('000)	Not in labour force ('000)	Unemployment rate (per cent)	Participation rate (per cent)	
	Full-time workers ('000)	Part-time workers ('000)	Total ('000)	Looking for full-time work ('000)	Total ('000)					
NEWCASTLE (SRS)										
MALES	1993— May	83.0	11.0	94.0	20.8	22.1	116.1	58.4	19.0	66.5
	1994— March	93.6	13.4	107.0	21.5	23.9	130.9	57.2	18.3	69.6
	April	87.0	12.6	99.7	16.6	16.9	116.5	59.5	14.5	66.2
	May	90.3	10.9	101.2	16.2	16.5	117.7	59.7	14.0	66.3
FEMALES	1993— May	39.1	31.1	70.2	7.3	9.1	79.2	108.2	11.5	42.3
	1994— March	38.5	44.3	82.7	9.7	13.0	95.8	100.4	13.6	48.8
	April	39.5	35.9	75.4	8.2	12.5	87.9	104.8	14.2	45.6
	May	37.8	38.0	75.8	7.0	10.1	85.9	103.4	11.7	45.4
PERSONS	1993— May	122.1	42.1	164.2	28.1	31.2	195.4	166.6	16.0	54.0
	1994— March	132.0	57.7	189.7	31.2	36.9	226.6	157.6	16.3	59.0
	April	126.5	48.6	175.1	24.8	29.4	204.4	164.3	14.4	55.4
	May	128.1	48.9	177.0	23.2	26.6	203.6	163.2	13.1	55.5
ILLAWARRA AND SOUTH EASTERN (SRs)										
MALES	1993— May	127.1	15.3	142.4	14.9	16.2	158.6	58.7	10.2	73.0
	1994— March	123.3	10.0	133.2	15.4	16.9	150.1	65.7	11.2	69.6
	April	126.0	9.5	135.5	16.5	17.2	152.8	70.8	11.3	68.3
	May	127.9	12.2	140.1	16.7	18.2	158.3	65.9	11.5	70.6
FEMALES	1993— May	51.6	46.4	98.0	8.3	11.4	109.4	109.3	10.4	50.0
	1994— March	49.2	41.3	90.5	11.8	15.3	105.9	112.5	14.5	48.5
	April	53.8	38.6	92.4	12.1	14.0	106.4	116.5	13.1	47.7
	May	56.8	40.1	97.0	8.8	11.9	108.9	117.1	10.9	48.2
PERSONS	1993— May	178.7	61.7	240.4	23.2	27.6	268.0	168.0	10.3	61.5
	1994— March	172.5	51.3	223.8	27.2	32.2	256.0	178.2	12.6	59.0
	April	179.9	48.1	228.0	28.6	31.2	259.1	187.3	12.0	58.0
	May	184.8	52.3	237.1	25.5	30.1	267.2	183.0	11.3	59.3
ILLAWARRA (SR)										
MALES	1993— May	91.5	9.2	100.7	12.0	12.6	113.3	42.2	11.1	72.9
	1994— March	81.9	5.0	86.9	13.4	14.6	101.6	43.1	14.4	70.2
	April	84.5	6.6	91.2	14.1	14.8	105.9	45.9	13.9	69.8
	May	85.5	7.9	93.4	12.2	13.7	107.1	42.7	12.8	71.5
FEMALES	1993— May	34.3	29.1	63.4	6.1	8.9	72.2	79.5	12.3	47.6
	1994— March	31.5	25.6	57.1	9.2	11.7	68.8	81.5	17.0	45.8
	April	35.3	22.4	57.6	10.7	11.6	69.3	85.0	16.8	44.9
	May	37.1	24.6	61.7	6.3	9.2	70.9	86.4	12.9	45.0
PERSONS	1993— May	125.8	38.3	164.1	18.1	21.5	185.6	121.7	11.6	60.4
	1994— March	113.4	30.6	144.0	22.7	26.4	170.4	124.6	15.5	57.8
	April	119.8	29.0	148.8	24.8	26.4	175.2	130.9	15.1	57.2
	May	122.7	32.5	155.2	18.6	22.8	178.0	129.2	12.8	57.9

TABLE 18. LABOUR FORCE STATUS, REGIONS OF NSW—continued

Month	Employed		Unemployed			Labour force ('000)	Not in labour force ('000)	Unemployment rate (per cent)	Participation rate (per cent)	
	Full-time workers ('000)	Part-time workers ('000)	Total	Looking for full-time work ('000)	Total ('000)					
WOLLONGONG (SRS)										
MALES	1993—									
	May	70.4	5.8	76.3	10.3	10.9	87.2	29.2	12.5	74.9
	1994—									
	March	60.9	2.8	63.8	10.8	11.3	75.1	29.7	15.1	71.7
	April	63.8	4.4	68.2	11.5	12.2	80.4	31.0	15.1	72.2
	May	64.5	5.1	69.6	10.7	11.5	81.1	28.4	14.1	74.1
FEMALES	1993—									
	May	25.5	20.0	45.5	5.0	7.7	53.2	55.2	14.5	49.1
	1994—									
	March	21.1	21.0	42.0	7.4	9.0	51.0	57.1	17.7	47.2
	April	24.5	16.4	40.9	8.8	9.8	50.6	61.0	19.3	45.4
	May	26.0	18.9	44.9	4.6	7.1	52.0	61.0	13.6	46.0
PERSONS	1993—									
	May	96.0	25.8	121.8	15.2	18.7	140.5	84.4	13.3	62.5
	1994—									
	March	82.0	23.8	105.8	18.2	20.4	126.2	86.8	16.1	59.2
	April	88.3	20.8	109.1	20.3	21.9	131.1	92.0	16.7	58.8
	May	90.5	24.0	114.5	15.3	18.5	133.1	89.4	13.9	59.8
RICHMOND-TWEED AND MID-NORTH COAST (SRs)										
MALES	1993—									
	May	74.7	12.4	87.1	16.6	17.2	104.3	57.9	16.5	64.3
	1994—									
	March	68.9	12.0	80.9	18.6	19.3	100.2	54.7	19.2	64.7
	April	70.8	12.4	83.2	18.9	19.6	102.8	53.7	19.0	65.7
	May	71.9	12.6	84.5	17.7	19.1	103.6	54.6	18.4	65.5
FEMALES	1993—									
	May	31.4	30.6	62.0	5.7	7.6	69.6	93.3	11.0	42.7
	1994—									
	March	32.0	30.4	62.4	7.7	9.6	72.0	93.8	13.4	43.4
	April	32.7	30.3	63.0	8.0	10.8	73.8	90.0	14.6	45.0
	May	31.5	29.0	60.5	7.5	9.4	69.9	93.6	13.4	42.7
PERSONS	1993—									
	May	106.1	43.0	149.1	22.3	24.9	174.0	151.2	14.3	53.5
	1994—									
	March	100.9	42.4	143.3	26.3	28.9	172.3	148.4	16.8	53.7
	April	103.5	42.7	146.2	26.9	30.4	176.6	143.7	17.2	55.1
	May	103.4	41.6	145.0	25.2	28.5	173.5	148.2	16.4	53.9
NORTHERN, FAR WEST-NORTH WESTERN AND CENTRAL WEST (SRs) (b)										
MALES	1993—									
	May	113.9	8.1	121.9	12.8	13.2	135.1	52.1	9.7	72.2
	1994—									
	March	103.6	11.3	114.9	11.1	11.6	126.5	51.1	9.2	71.2
	April	107.2	9.7	116.9	10.6	10.9	127.8	52.2	8.5	71.0
	May	106.7	9.8	116.5	9.3	9.3	125.8	51.5	7.4	71.0
FEMALES	1993—									
	May	46.4	36.7	83.0	6.9	9.8	92.9	87.6	10.6	51.5
	1994—									
	March	43.6	33.5	77.2	5.7	7.8	85.0	93.0	9.2	47.8
	April	37.2	35.4	72.7	5.8	7.4	80.0	96.8	9.2	45.2
	May	41.1	34.1	75.3	* 3.8	* 4.8	80.0	95.3	* 6.0	45.7
PERSONS	1993—									
	May	160.2	44.8	205.0	19.7	23.0	228.0	139.8	10.1	62.0
	1994—									
	March	147.2	44.8	192.0	16.8	19.5	211.5	144.1	9.2	59.5
	April	144.5	45.1	189.6	16.3	18.3	207.8	149.0	8.8	58.2
	May	147.9	43.9	191.8	13.0	14.1	205.8	146.8	6.8	58.4

TABLE 18. LABOUR FORCE STATUS, REGIONS OF NSW—*continued*

Month	Employed			Unemployed		Labour force ('000)	Not in labour force ('000)	Unemployment rate (per cent)	Participation rate (per cent)	
	Full-time workers ('000)	Part-time workers ('000)	Total ('000)	Looking for full-time work ('000)	Total ('000)					
MURRAY-MURRUMBIDGEE (SR)										
MALES	1993—									
	May	54.7	4.9	59.6	* 4.7	* 4.7	64.3	17.9	* 7.3	78.2
	1994—									
	March	55.5	5.7	61.2	6.2	6.2	67.4	24.7	9.2	73.2
	April	56.6	9.0	65.5	5.0	5.0	70.5	22.5	7.1	75.8
	May	56.6	5.1	61.7	5.5	5.5	67.2	25.8	8.1	72.2
FEMALES	1993—									
	May	20.3	19.9	40.2	* 2.2	* 3.1	43.3	45.1	* 7.2	49.0
	1994—									
	March	21.5	15.7	37.1	* 1.7	* 3.9	41.0	48.1	* 9.5	46.0
	April	24.2	17.5	41.7	* 2.3	* 3.2	45.0	47.3	* 7.1	48.7
	May	24.4	18.1	42.5	* 2.0	* 3.7	46.2	47.8	* 8.1	49.2
PERSONS	1993—									
	May	75.0	24.8	99.8	7.0	7.8	107.7	63.0	7.3	63.1
	1994—									
	March	77.0	21.4	98.3	7.9	10.1	108.4	72.8	9.3	59.8
	April	80.8	26.5	107.3	7.3	8.2	115.5	69.8	7.1	62.3
	May	81.0	23.3	104.2	7.5	9.2	113.4	73.6	8.1	60.6

(a) Previously Manly-Warringah (SR). (b) Excludes components of Far West (SD). These are published as part of Balance of NSW (MSR).

TABLE 19. EMPLOYED PERSONS: AGE, REGIONS OF NSW  
(\*000)

Region	Age group (years)							
	15-24		25-34		35-54		55 and over	
	May 1993	May 1994	May 1993	May 1994	May 1993	May 1994	May 1993	May 1994
Inner Sydney and Inner Western Sydney (SRs)	24.6	33.0	58.9	66.6	83.7	79.7	11.4	13.8
Inner Sydney (SR)	11.9	20.0	41.2	42.9	56.7	48.5	4.6	7.8
Eastern Suburbs (SR)	26.3	16.8	31.8	38.0	45.9	47.1	11.0	13.8
St George-Sutherland (SR)	45.3	50.8	43.7	48.7	95.5	94.7	18.8	22.7
Canterbury-Bankstown (SR)	27.8	30.1	37.7	30.7	46.5	61.5	10.1	11.6
Fairfield-Liverpool and Outer South Western Sydney (SRs)	46.8	43.4	59.2	55.9	102.4	101.9	13.3	21.2
Fairfield-Liverpool (SR)	28.8	23.7	37.7	33.0	57.0	52.5	9.3	13.0
Central Western Sydney (SR)	18.6	25.0	26.3	22.9	35.9	36.9	9.0	11.0
Outer Western Sydney (SR)	26.2	28.6	34.8	31.6	53.8	62.7	8.0	6.7
Blacktown-Baulkham Hills (SR)	31.9	36.2	37.9	37.6	71.1	80.0	10.5	11.7
Lower Northern Sydney (SR)	23.7	22.5	39.0	45.1	61.7	61.5	8.4	9.5
Hornsby-Ku-ring-gai (SR)	25.4	23.9	20.1	23.9	59.0	60.8	10.2	14.0
Northern Beaches (SR) (a)	24.0	22.2	32.7	33.8	55.1	50.9	7.5	12.0
Gosford-Wyong (SR)	16.8	19.1	29.2	25.0	44.1	46.5	6.4	9.2
<i>Sydney (MSR)</i>	<i>337.6</i>	<i>351.6</i>	<i>451.3</i>	<i>459.6</i>	<i>754.6</i>	<i>784.2</i>	<i>124.4</i>	<i>157.3</i>
Hunter (SR)	39.1	49.4	47.3	48.8	92.2	95.9	13.0	13.9
Newcastle (SRS)	35.6	42.0	40.3	43.6	77.6	80.6	10.8	10.8
Illawarra and South Eastern (SRs)	46.2	43.2	62.0	61.2	112.4	110.1	19.8	22.7
Illawarra (SR)	31.3	31.4	44.7	43.1	76.4	69.4	11.7	11.2
Wollongong (SRS)	23.7	21.7	36.0	35.3	53.9	49.0	8.2	8.5
Richmond-Tweed and Mid-North Coast (SRs)	23.4	21.6	32.8	33.9	63.4	68.0	29.5	21.5
Northern, Far West-North Western and Central West (SRs) (b)	36.1	32.5	41.3	40.9	101.0	94.6	26.6	23.9
Murray-Murrumbidgee (SR)	19.4	16.9	26.9	26.6	45.9	46.6	7.6	14.1
<i>Balance of NSW (MSR)</i>	<i>165.5</i>	<i>164.8</i>	<i>211.3</i>	<i>213.7</i>	<i>418.1</i>	<i>417.4</i>	<i>96.8</i>	<i>96.6</i>
<b>NSW</b>	<b>503.1</b>	<b>516.5</b>	<b>662.5</b>	<b>673.4</b>	<b>1,172.7</b>	<b>1,201.6</b>	<b>221.2</b>	<b>253.9</b>

(a) Previously Manly-Warringah (SR). (b) Excludes components of Far West (SD). These are published as part of Balance of NSW (MSR).



TABLE 20. EMPLOYED PERSONS: INDUSTRY AND OCCUPATION  
 SYDNEY (MSR) AND BALANCE OF NSW (MSR)  
 ('000)

<i>Industry division and Major occupation group</i>	<i>Males</i>		<i>Females</i>		<i>Persons</i>		
	<i>May 1993</i>	<i>May 1994</i>	<i>May 1993</i>	<i>May 1994</i>	<i>May 1993</i>	<i>February 1994</i>	<i>May 1994</i>
<b>SYDNEY (MSR)</b>							
<b>Industry—</b>							
Agriculture, forestry, fishing and hunting	6.3	5.6	*3.2	*3.6	9.4	10.1	9.3
Mining	*4.0	*4.6	*0.6	*0.9	*4.7	*5.0	5.6
Manufacturing	177.9	181.8	81.4	86.3	259.3	277.7	268.2
Electricity, gas and water	18.0	16.2	5.3	*2.8	23.2	20.2	19.0
Construction	105.5	106.8	15.7	15.5	121.2	124.1	122.3
Wholesale and retail trade	214.7	210.7	171.0	170.6	385.7	365.6	381.3
Transport and storage	64.2	66.9	26.7	23.9	90.9	89.2	90.9
Communication	18.7	20.7	10.3	11.9	28.9	35.5	32.7
Finance property and business services	131.2	139.4	117.9	130.8	249.1	270.5	270.2
Public administration and defence	39.2	41.0	30.1	25.8	69.4	75.0	66.8
Community services	97.9	115.1	198.3	235.1	296.2	319.8	350.2
Recreation, personal and other services	69.3	68.9	60.5	67.6	129.7	137.6	136.5
<b>Occupation—</b>							
Managers and administrators	127.9	130.0	40.1	40.3	168.0	184.9	170.2
Professionals	149.5	161.8	118.2	120.5	267.7	274.6	282.3
Para-professionals	45.5	53.4	47.7	52.8	93.2	100.3	106.2
Tradespersons	211.7	197.7	20.4	19.1	232.1	233.4	216.8
Clerks	75.1	78.2	247.0	272.1	322.1	341.1	350.3
Salespersons and personal service workers	99.3	110.9	161.7	173.0	261.0	258.7	283.9
Plant and machine operators, and drivers	77.3	89.1	17.6	18.9	94.9	108.0	107.9
Labourers and related workers	160.4	156.8	68.3	78.3	228.8	229.4	235.1
<b>Total employed</b>	<b>946.8</b>	<b>977.8</b>	<b>721.1</b>	<b>774.9</b>	<b>1,667.9</b>	<b>1,730.5</b>	<b>1,752.8</b>
<b>BALANCE OF NSW (MSR)</b>							
<b>Industry—</b>							
Agriculture, forestry, fishing and hunting	66.8	70.3	26.8	28.2	93.6	102.0	98.6
Mining	24.0	17.1	*0.3	*0.6	24.3	21.0	17.8
Manufacturing	90.8	90.5	26.8	25.9	117.6	113.0	116.4
Electricity, gas and water	12.9	13.8	*1.9	*2.6	14.7	15.9	16.4
Construction	54.8	52.6	6.2	7.7	60.9	57.9	60.3
Wholesale and retail trade	83.4	101.3	89.4	84.3	172.8	170.8	185.6
Transport and storage	37.8	33.2	6.2	6.9	44.0	38.8	40.1
Communication	7.3	8.7	*3.5	*3.6	10.8	13.9	12.2
Finance property and business services	29.0	28.2	33.3	36.7	62.3	67.6	64.9
Public administration and defence	26.5	24.9	13.5	13.4	40.0	36.6	38.3
Community services	50.7	53.2	112.2	110.1	162.9	155.2	163.3
Recreation, personal and other services	40.1	33.1	47.6	45.6	87.7	77.2	78.7
<b>Occupation—</b>							
Managers and administrators	92.4	91.7	37.2	31.8	129.6	123.1	123.6
Professionals	49.8	51.4	43.7	42.6	93.4	90.4	94.0
Para-professionals	25.2	26.3	24.2	29.2	49.4	58.8	55.5
Tradespersons	127.3	120.7	14.6	14.5	141.9	134.9	135.2
Clerks	21.3	25.1	94.7	93.7	116.0	117.1	118.8
Salespersons and personal service workers	41.0	40.1	100.8	87.9	141.8	120.9	128.0
Plant and machine operators, and drivers	64.6	61.0	7.8	9.1	72.4	71.7	70.2
Labourers and related workers	102.4	110.6	44.8	56.8	147.2	153.2	167.4
<b>Total employed</b>	<b>524.0</b>	<b>527.0</b>	<b>367.7</b>	<b>365.6</b>	<b>891.7</b>	<b>870.1</b>	<b>892.6</b>

TABLE 21. UNEMPLOYED PERSONS: UNEMPLOYMENT RATE BY AGE, REGIONS OF NSW

Region	Unemployed persons ('000)				Unemployment rate (per cent)			
	15-24 years		25 and over		15-24		25 and over	
	May 1993	May 1994	May 1993	May 1994	May 1993	May 1994	May 1993	May 1994
Inner Sydney and Inner Western Sydney (SRs)	5.2	8.0	15.9	12.7	17.5	19.4	9.4	7.4
Inner Sydney (SR)	* 3.2	6.4	8.5	8.0	* 21.2	24.3	7.6	7.5
Eastern Suburbs (SR)	* 3.0	* 0.9	6.5	7.2	* 10.2	* 5.1	6.8	6.8
St George-Sutherland (SR)	6.9	4.3	10.9	6.2	13.3	7.8	6.4	3.6
Canterbury-Bankstown (SR)	5.0	6.1	13.1	13.8	15.1	16.9	12.2	11.7
Fairfield-Liverpool and Outer South Western Sydney (SRs)	11.5	12.0	24.1	22.4	19.7	21.7	12.1	11.1
Fairfield-Liverpool (SR)	8.7	8.8	18.9	19.6	23.3	27.1	15.4	16.6
Central Western Sydney (SR)	* 2.7	5.0	10.2	11.9	* 12.5	16.6	12.5	14.4
Outer Western Sydney (SR)	3.8	6.4	6.6	6.0	12.5	18.3	6.4	5.6
Blacktown-Baulkham Hills (SR)	6.0	5.4	11.3	5.4	15.8	13.1	8.6	4.0
Lower Northern Sydney (SR)	* 3.3	* 2.9	6.4	* 4.3	* 12.3	* 11.3	5.6	* 3.6
Hornsby-Ku-ring-gai (SR)	* 2.5	* 3.2	5.2	3.8	* 8.9	* 11.9	5.5	3.7
Northern Beaches (SR) (a)	* 0.6	* 1.3	* 1.9	3.8	* 2.4	* 5.5	* 2.0	3.8
Gosford-Wyong (SR)	5.1	* 2.9	10.2	8.0	23.4	* 13.1	11.3	9.0
<i>Sydney (MSR)</i>	<i>55.6</i>	<i>58.4</i>	<i>122.1</i>	<i>105.4</i>	<i>14.1</i>	<i>14.2</i>	<i>8.4</i>	<i>7.0</i>
Hunter (SR)	12.5	10.1	20.9	18.9	24.2	17.0	12.1	10.6
Newcastle (SRS)	12.2	9.2	19.0	17.4	25.5	18.0	12.9	11.4
Illawarra and South Eastern (SRs)	9.0	12.7	18.6	17.4	16.3	22.7	8.8	8.2
Illawarra (SR)	7.0	8.4	14.5	14.4	18.2	21.1	9.9	10.4
Wollongong (SRS)	6.4	7.2	12.3	11.3	21.1	25.0	11.2	10.8
Richmond-Tweed and Mid-North Coast (SRs)	7.4	12.5	17.5	16.0	24.0	36.6	12.2	11.5
Northern, Far West-North Western and Central West (SRs) (b)	7.1	* 4.0	15.9	10.0	16.5	* 11.0	8.6	5.9
Murray-Murrumbidgee (SR)	* 4.0	* 3.1	* 3.8	6.1	* 17.2	* 15.6	* 4.5	6.5
<i>Balance of NSW (MSR)</i>	<i>41.0</i>	<i>43.2</i>	<i>77.3</i>	<i>69.2</i>	<i>19.8</i>	<i>20.8</i>	<i>9.6</i>	<i>8.7</i>
<b>NSW</b>	<b>96.6</b>	<b>101.6</b>	<b>199.4</b>	<b>174.7</b>	<b>16.1</b>	<b>16.4</b>	<b>8.8</b>	<b>7.6</b>

(a) Previously Manly Warringah (SR). (b) Excludes components of Far West (SD). These are published as part of Balance of NSW (MSR).

TABLE 22. LABOUR FORCE STATUS: ORIGINAL SERIES, ACT

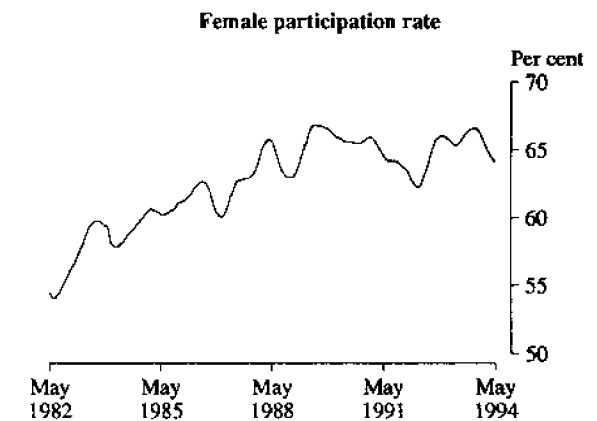
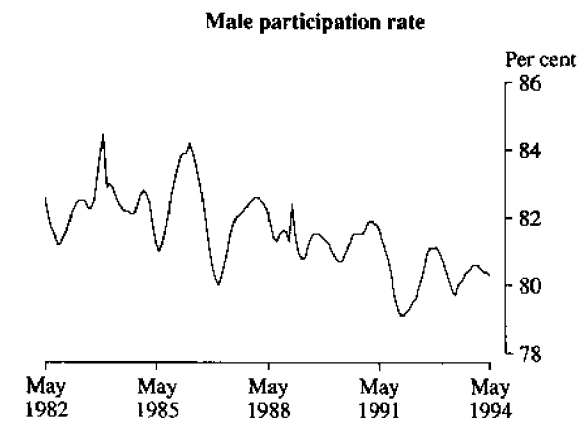
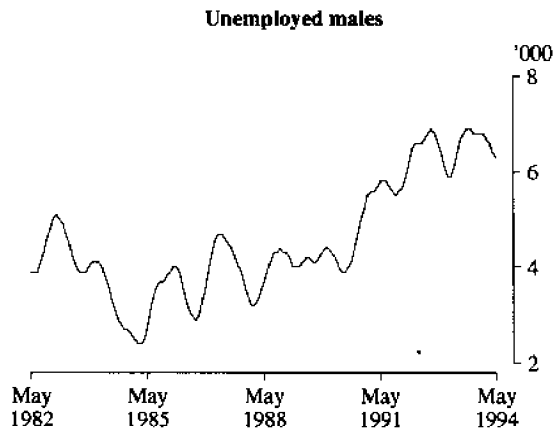
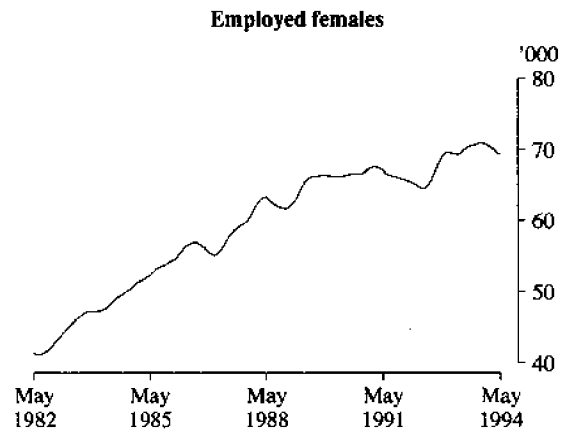
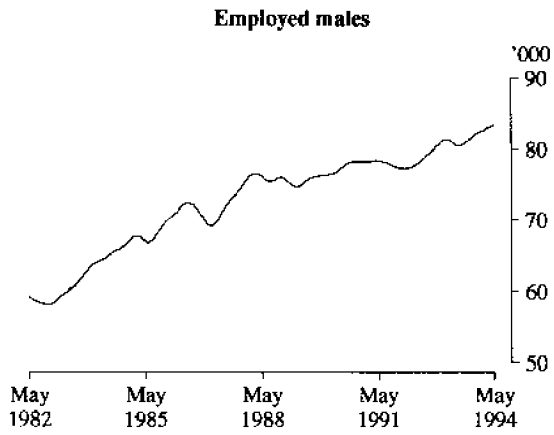
Month	Employed			Unemployed			Labour force ('000)	Not in labour force ('000)	Civilian population aged 15 and over ('000)	Unemployment rate (per cent)	Participation rate (per cent)
	Full-time workers ('000)	Part-time workers ('000)	Total ('000)	Looking for full-time work ('000)	Looking for part-time work ('000)	Total ('000)					
MALES											
May—											
1990	70.4	7.8	78.2	2.2	2.1	4.3	82.6	17.8	100.4	5.2	82.2
1991	69.3	8.3	77.6	4.3	1.7	5.9	83.5	19.5	103.0	7.1	81.1
1992	69.4	9.0	78.4	4.6	1.8	6.4	84.8	21.3	106.1	7.5	79.9
1993—											
March	72.9	9.2	82.1	4.4	2.2	6.6	88.7	19.7	108.4	7.5	81.8
April	70.7	9.8	80.5	4.6	1.6	6.3	86.8	22.0	108.7	7.3	79.8
May	71.9	9.2	81.1	4.7	1.1	5.8	86.9	22.2	109.1	6.7	79.7
1994—											
February	74.1	9.1	83.3	6.7	1.8	8.6	91.8	19.3	111.1	9.3	82.7
March	72.6	10.7	83.3	5.0	1.6	6.6	89.8	21.5	111.4	7.3	80.7
April	72.5	10.2	82.7	5.2	1.2	6.4	89.1	22.4	111.5	7.2	79.9
May	73.1	10.5	83.6	4.4	1.6	6.0	89.6	22.0	111.6	6.7	80.3
MARRIED FEMALES											
May—											
1990	24.2	14.5	38.8	* 0.5	* 1.0	1.5	40.2	21.2	61.4	3.7	65.5
1991	26.4	14.0	40.5	* 0.5	* 0.5	* 1.0	41.5	22.2	63.7	* 2.5	65.1
1992	25.4	14.7	40.1	* 0.9	* 0.8	1.7	41.8	22.1	63.9	4.0	65.4
1993—											
March	26.3	13.6	39.9	1.4	* 0.9	2.2	42.2	20.3	62.4	5.3	67.5
April	25.6	14.7	40.3	* 0.6	* 0.6	1.2	41.5	20.9	62.3	2.8	66.5
May	27.3	13.5	40.8	* 0.8	* 0.4	1.2	41.9	20.7	62.7	2.8	66.9
1994—											
February	24.6	14.7	39.4	1.2	* 0.8	2.0	41.4	22.7	64.1	4.9	64.6
March	25.3	14.3	39.6	* 0.9	* 0.8	1.7	41.3	22.9	64.2	4.2	64.3
April	25.0	15.0	40.0	1.0	* 0.9	2.0	41.9	21.8	63.7	4.7	65.8
May	25.8	15.7	41.4	* 0.8	1.0	1.8	43.3	21.0	64.2	4.2	67.4
ALL FEMALES											
May—											
1990	43.9	23.4	67.3	1.6	2.0	3.7	70.9	35.8	106.7	5.1	66.4
1991	45.7	20.6	66.3	2.3	* 1.2	3.5	69.8	40.0	109.8	5.0	63.6
1992	40.0	25.3	65.3	2.3	1.4	3.7	69.1	43.1	112.2	5.4	61.6
1993—											
March	44.1	24.8	68.9	4.2	3.2	7.4	76.3	37.7	114.1	9.7	66.9
April	44.0	25.2	69.1	2.7	2.2	4.9	74.0	40.2	114.3	6.6	64.8
May	45.1	26.4	71.4	2.6	1.7	4.3	75.8	38.7	114.5	5.7	66.2
1994—											
February	44.4	25.2	69.6	5.1	2.4	7.6	77.2	38.7	115.9	9.8	66.6
March	44.6	25.1	69.7	3.2	2.0	5.2	74.9	41.2	116.1	6.9	64.5
April	44.9	24.6	69.5	3.4	2.0	5.4	74.9	41.3	116.1	7.2	64.5
May	45.7	25.0	70.7	2.3	2.6	5.0	75.6	40.5	116.1	6.5	65.1
PERSONS											
May—											
1990	114.3	31.2	145.5	3.8	4.2	8.0	153.5	53.7	207.2	5.2	74.1
1991	115.0	28.9	143.9	6.6	2.8	9.5	153.4	59.5	212.8	6.2	72.1
1992	109.4	34.3	143.7	6.9	3.2	10.1	153.8	64.4	218.3	6.6	70.5
1993—											
March	117.0	34.0	151.0	8.6	5.5	14.0	165.0	57.4	222.5	8.5	74.2
April	114.7	34.9	149.6	7.3	3.9	11.2	160.8	62.2	223.0	7.0	72.1
May	117.0	35.6	152.6	7.2	2.9	10.1	162.7	60.9	223.5	6.2	72.8
1994—											
February	118.5	34.4	152.9	11.9	4.3	16.1	169.0	58.0	227.0	9.5	74.5
March	117.2	35.8	153.0	8.2	3.6	11.7	164.7	62.7	227.5	7.1	72.4
April	117.4	34.8	152.2	8.5	3.2	11.7	163.9	63.7	227.6	7.2	72.0
May	118.9	35.4	154.3	6.7	4.2	10.9	165.2	62.5	227.8	6.6	72.5

TABLE 23. LABOUR FORCE STATUS: TREND SERIES, ACT(a)

Month	Employed ('000)	Unemployed ('000)	Labour force ('000)	Unemployment rate (per cent)	Participation rate (per cent)
MALES					
May—					
1990	77.1	3.9	81.0	4.9	80.7
1991	78.4	5.8	84.1	6.8	81.7
1992	77.9	6.6	84.5	7.8	79.6
1993—					
March	81.3	5.9	87.2	6.8	80.4
April	81.0	6.1	87.1	7.0	80.1
May	80.7	6.4	87.1	7.3	79.8
June	80.5	6.7	87.2	7.6	79.7
July	80.6	6.8	87.4	7.8	80.0
August	80.9	6.9	87.7	7.8	80.1
September	81.2	6.9	88.1	7.8	80.3
October	81.7	6.8	88.5	7.7	80.4
November	82.0	6.8	88.8	7.6	80.5
December	82.3	6.8	89.0	7.6	80.6
1994—					
January	82.5	6.8	89.3	7.6	80.6
February	82.7	6.7	89.4	7.5	80.5
March	83.0	6.6	89.6	7.3	80.4
April	83.2	6.4	89.6	7.1	80.4
May	83.4	6.2	89.6	6.9	80.3
FEMALES					
May—					
1990	66.2	3.8	70.0	5.4	65.6
1991	67.0	3.9	70.9	5.6	64.6
1992	64.6	5.4	70.0	7.7	62.4
1993—					
March	69.5	5.3	74.8	7.1	65.6
April	69.4	5.3	74.7	7.0	65.3
May	69.6	5.2	74.8	6.9	65.4
June	70.0	5.2	75.2	6.9	65.6
July	70.3	5.3	75.6	7.0	66.0
August	70.6	5.5	76.1	7.2	66.3
September	70.7	5.7	76.5	7.5	66.5
October	70.9	5.9	76.7	7.6	66.6
November	71.0	5.8	76.8	7.6	66.6
December	70.9	5.7	76.6	7.5	66.3
1994—					
January	70.7	5.5	76.2	7.3	65.8
February	70.3	5.4	75.7	7.1	65.3
March	70.0	5.2	75.2	6.9	64.8
April	69.7	5.1	74.8	6.9	64.4
May	69.4	5.1	74.5	6.8	64.1
PERSONS					
May—					
1990	143.3	7.7	151.1	5.1	72.9
1991	145.4	9.7	155.1	6.3	72.9
1992	142.5	12.0	154.5	7.8	70.8
1993—					
March	150.7	11.3	162.0	7.0	72.8
April	150.4	11.4	161.8	7.0	72.6
May	150.3	11.6	161.9	7.2	72.4
June	150.5	11.9	162.3	7.3	72.5
July	150.9	12.2	163.1	7.5	72.8
August	151.4	12.4	163.8	7.6	73.0
September	152.0	12.6	164.6	7.7	73.2
October	152.5	12.7	165.2	7.7	73.4
November	153.0	12.6	165.6	7.6	73.4
December	153.2	12.5	165.7	7.5	73.3
1994—					
January	153.2	12.3	165.5	7.4	73.0
February	153.1	12.1	165.1	7.3	72.7
March	153.0	11.8	164.7	7.2	72.4
April	152.9	11.5	164.4	7.0	72.2
May	152.9	11.3	164.1	6.9	72.1

(a) See Explanatory Note 28.

TREND SERIES, ACT (a)



(a) Comparisons between these graphs should not be made, as their vertical axes are not similarly scaled.

TABLE 24. LABOUR FORCE STATUS: AGE, ACT, MAY 1994

	Persons						Total
	Females			Age group (years)			
	Males	Married	Total	15-19	20-24	25 and over	
	— '000 —						
<i>Employed</i>	83.6	41.4	70.7	10.7	23.3	120.4	154.3
Full-time workers	73.1	25.8	45.7	2.9	15.8	100.2	118.9
Part-time workers	10.5	15.7	25.0	7.8	7.4	20.2	35.4
<i>Unemployed</i>	6.0	1.8	5.0	3.5	2.3	5.1	10.9
Looking for full-time work	4.4	* 0.8	2.3	1.5	1.5	3.7	6.7
Looking for part-time work	1.6	1.0	2.6	2.0	* 0.8	1.4	4.2
<i>Labour force</i>	89.6	43.3	75.6	14.2	25.6	125.5	165.2
<i>Not in labour force</i>	22.0	21.0	40.5	10.2	4.9	47.4	62.5
Aged 15-19 attending school	3.7	* 0.0	3.7	7.5	..	..	7.5
<i>Civilian population</i>	111.6	64.2	116.2	24.4	30.4	172.9	227.8
	— per cent —						
Unemployment rate	6.7	4.2	6.5	24.8	9.1	4.0	6.6
Looking for full-time work	5.7	* 3.1	4.8	34.6	8.7	3.5	5.4
Participation rate	80.3	67.4	65.1	58.1	84.0	72.6	72.5
Employment/population ratio	74.9	64.5	60.9	43.7	76.4	69.6	67.8
	— number —						
Average weekly hours worked by employed persons	39.0	30.9	31.0	18.9	31.0	37.6	35.3
Average duration of unemployment (weeks)	69.0	52.9	32.9	23.9	40.6	78.0	52.6

TABLE 25. NON-INSTITUTIONALISED PERSONS(a): LABOUR FORCE STATUS, BIRTHPLACE AND YEAR OF ARRIVAL, ACT, MAY 1994 ('000)

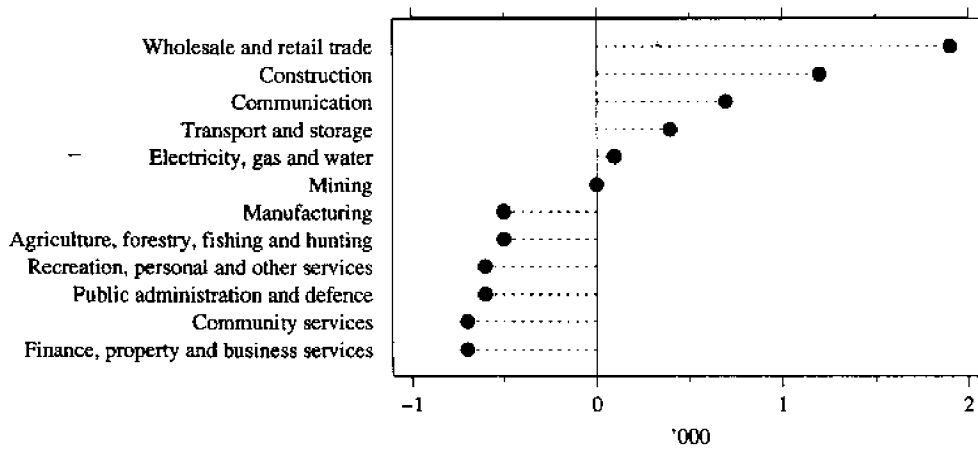
	Employed	Unemployed	Not in labour force	Labour force	Civilian population aged 15 and over
<i>Born in Australia</i>	114.0	7.6	37.5	121.6	159.1
<i>Born outside Australia</i>	40.3	3.4	23.0	43.7	66.7
Arrived before 1966	11.4	* 0.9	11.1	12.3	23.4
Arrived 1966-1970	7.2	* 0.4	2.2	7.6	9.8
Arrived 1971-1975	8.0	* 0.4	1.8	8.4	10.3
Arrived 1976-1980	3.9	* 0.3	1.6	4.2	5.8
Arrived 1981-1985	3.9	* 0.5	1.3	4.3	5.6
Arrived 1986-1990	4.4	* 0.4	2.7	4.8	7.5
Arrived 1991 to survey date	1.5	* 0.4	2.4	1.9	4.3
<i>Main English speaking countries</i>	18.1	1.1	6.7	19.1	25.8
Arrived before 1966	5.2	* 0.5	4.2	5.7	9.8
Arrived 1966-1970	3.7	* 0.2	* 0.7	3.9	4.6
Arrived 1971-1975	4.2	* 0.0	* 0.5	4.2	4.6
Arrived 1976-1980	1.2	* 0.3	* 0.5	1.5	2.0
Arrived 1981-1985	1.5	* 0.1	* 0.2	1.5	1.8
Arrived 1986-1990	1.2	* 0.0	* 0.4	1.2	1.6
Arrived 1991 to survey date	1.1	* 0.0	* 0.3	1.1	1.4
<i>Other than Main English speaking countries</i>	22.2	2.3	16.3	24.5	40.9
Arrived before 1966	6.2	* 0.4	6.9	6.6	13.6
Arrived 1966-1970	3.6	* 0.2	1.5	3.7	5.3
Arrived 1971-1975	3.9	* 0.4	1.4	4.3	5.7
Arrived 1976-1980	2.6	* 0.1	1.1	2.7	3.8
Arrived 1981-1985	2.4	* 0.4	1.1	2.8	3.9
Arrived 1986-1990	3.2	* 0.4	2.3	3.6	5.9
Arrived 1991 to survey date	* 0.4	* 0.4	2.0	* 0.8	2.9
<b>Total</b>	<b>154.3</b>	<b>10.9</b>	<b>60.5</b>	<b>165.2</b>	<b>225.8</b>

(a) Excludes boarding school pupils.

TABLE 26. EMPLOYED PERSONS: INDUSTRY AND OCCUPATION, ACT  
(<sup>'000</sup>)

Industry division and Major occupation group	Males		Females		Persons		
	May 1993	May 1994	May 1993	May 1994	May 1993	February 1994	May 1994
<b>Industry—</b>							
Agriculture, forestry, fishing and hunting	*0.8	*0.5	*0.4	*0.2	*1.2	*1.3	*0.7
Mining	*0.1	*0.1	*0.0	*0.0	*0.1	*0.1	*0.1
Manufacturing	3.3	3.5	2.0	*1.3	5.2	5.6	4.7
Electricity, gas and water	*0.8	*0.8	*0.1	*0.2	*0.9	*1.1	*1.0
Construction	7.9	8.3	*0.7	1.5	8.6	9.1	9.8
Wholesale and retail trade	12.8	16.0	12.0	10.7	24.8	25.6	26.7
Transport and storage	2.7	2.7	*0.8	*1.1	3.5	4.5	3.9
Communication	*1.1	*1.3	*0.4	*0.9	1.5	2.2	2.2
Finance property and business services	9.6	7.9	6.4	7.4	16.0	14.1	15.3
Public administration and defence	21.7	20.8	16.6	17.9	38.3	39.9	38.7
Community services	13.2	14.3	22.6	20.8	35.8	34.3	35.1
Recreation, personal and other services	7.2	7.6	9.5	8.6	16.7	15.0	16.1
<b>Occupation—</b>							
Managers and administrators	14.6	12.4	5.0	5.4	19.6	19.6	17.8
Professionals	19.4	17.3	15.5	12.4	34.9	29.6	29.7
Para-professionals	4.6	5.7	3.2	4.5	7.8	9.3	10.2
Tradespersons	13.2	14.7	1.9	1.3	15.2	15.6	15.9
Clerks	10.6	11.5	22.9	26.2	33.5	36.7	37.8
Salespersons and personal service workers	8.1	8.8	17.3	17.0	25.4	25.2	25.8
Plant and machinery operators, and drivers	3.5	4.0	*0.5	*0.3	4.0	4.8	4.3
Labourers and related workers	7.2	9.2	5.0	3.7	12.2	12.2	12.9
<b>Total employed</b>	<b>81.1</b>	<b>83.6</b>	<b>71.4</b>	<b>70.7</b>	<b>152.6</b>	<b>152.9</b>	<b>154.3</b>

ANNUAL CHANGE IN EMPLOYMENT BY INDUSTRY DIVISION, ACT,  
MAY 1993 TO MAY 1994



ANNUAL CHANGE IN EMPLOYMENT BY OCCUPATION GROUP, ACT,  
MAY 1993 TO MAY 1994

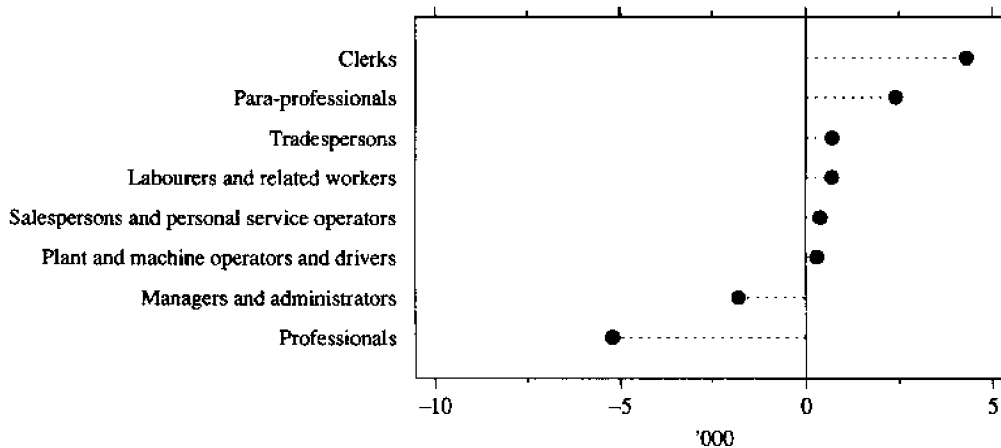
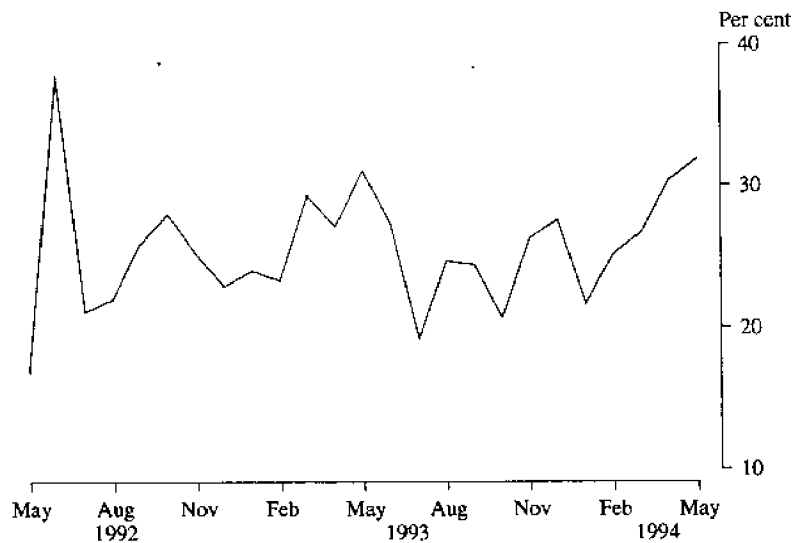


TABLE 27. LONG-TERM UNEMPLOYMENT, ACT

Month	Long-term unemployment									Long-term unemployment as a proportion of total unemployment		
	52 weeks and under 104			104 weeks and over			Total			Males (per cent)	Females (per cent)	Persons (per cent)
	Males ('000)	Females ('000)	Persons ('000)	Males ('000)	Females ('000)	Persons ('000)	Males ('000)	Females ('000)	Persons ('000)			
<i>1993—</i>												
March	* 1.5	1.0	* 2.2	* 0.9	1.0	1.9	2.4	1.7	4.1	36.2	23.0	29.3
April	* 1.2	* 0.6	* 1.7	* 0.8	* 0.6	1.4	2.0	1.0	3.0	32.2	20.5	27.1
May	* 1.4	* 0.2	* 2.1	* 0.8	* 0.2	1.0	2.1	1.0	3.1	36.7	23.7	31.1
June	* 1.2	* 0.5	* 1.8	* 0.9	* 0.5	1.3	2.1	1.1	3.2	30.8	22.4	27.3
July	* 0.6	* 0.5	* 1.0	* 0.7	* 0.5	1.2	1.3	* 0.9	2.2	20.9	17.0	19.2
August	* 0.7	* 0.7	* 1.2	* 0.9	* 0.7	1.6	1.6	1.2	2.8	23.0	27.1	24.7
September	* 0.7	* 0.7	* 1.4	* 0.9	* 0.7	1.7	1.6	1.4	3.0	25.1	23.7	24.4
October	* 0.7	* 0.3	* 1.2	* 0.8	* 0.3	1.1	1.5	* 0.8	2.3	23.8	16.8	20.7
November	* 0.6	* 0.5	* 1.1	1.2	* 0.5	1.7	1.8	1.0	2.8	33.8	18.7	26.3
December	* 0.6	* 0.6	* 1.2	1.5	* 0.6	2.1	2.1	1.2	3.3	31.7	22.5	27.6
<i>1994—</i>												
January	* 0.5	* 0.5	* 1.2	1.6	* 0.5	2.1	2.1	1.1	3.2	25.0	17.4	21.7
February	* 0.7	1.1	* 1.8	1.2	1.1	2.3	2.0	2.1	4.1	22.8	27.8	25.2
March	* 0.9	* 0.6	* 1.7	* 0.8	* 0.6	1.4	1.7	1.4	3.1	26.5	26.9	26.7
April	* 0.9	* 0.8	* 1.7	1.3	* 0.6	1.9	2.2	1.4	3.6	33.9	26.2	30.4
May	* 1.0	* 0.6	* 1.5	1.5	* 0.5	2.0	2.4	1.0	3.5	41.1	20.9	31.9

LONG TERM UNEMPLOYED AS A PROPORTION OF TOTAL UNEMPLOYED, ACT





## LABOUR FORCE SUPPLEMENTARY TOPICS

Although emphasis in the population survey is placed on the regular collection of data on demographic and labour force characteristics, supplementary and special surveys of particular aspects of the labour force are carried out from time to time. The results of these surveys on labour force and related topics are published separately as shown below.

<i>Catalogue no.</i>	<i>Title of Publication</i>	<i>Price (a) \$</i>
6206.0	Labour Force Experience, Australia, March 1993	12.70
6209.0	Labour Mobility, Australia, February 1992	12.50
6216.0	Multiple Jobholding, Australia, July 1991	12.50
6220.0	Persons Not in the Labour Force, Australia, September 1993	13.00
6222.0	Job Search Experience of Unemployed Persons, Australia, July 1993	12.70
6224.0	Labour Force Status and Other Characteristics of Families, Australia, June 1993	12.70
6227.0	Transition from Education to Work, Australia, May 1993	12.70
6235.0	Labour Force Status and Educational Attainment, Australia, February 1993	12.70
6238.0	Retirement and Retirement Intentions, Australia, October 1992	12.70
6243.0	Career Paths of Persons with Trade Qualifications, Australia, 1989	12.50
6245.0	Successful and Unsuccessful Job Search Experience, Australia, July 1992	12.50
6250.0	Labour Force Status and Other Characteristics of Migrants, Australia, September 1993	13.00
0254.0	Career Experience, Australia, February 1993	12.70
6264.0	Persons who had re-entered the Labour Force, Australia, May 1993	12.70
6265.0	Underemployed Workers, Australia, May 1991	11.50
6267.0	Persons Who Have Left the Labour Force, Australia, April 1991	11.50
6272.0	Participation in Education, Australia, September 1993	13.00
6275.0	Persons Employed at Home Australia, March 1992	12.50
6277.0	Career Paths of Qualified Nurses, Australia, March to July 1989	12.50
6278.0	How Workers Get Their Training, Australia, 1989	12.50
6310.0	Weekly Earnings of Employees (Distribution), Australia, August 1993	13.00
6317.0	Annual and Long Service Leave Taken, Australia, May 1988 to April 1989	11.50
6319.0	Superannuation, Australia, November 1993	13.00
6325.0	Trade Union Members, Australia, August 1992	12.70
6334.0	Employment Benefits, Australia, August 1992	12.50

(a) Prices quoted are subject to revision.

## EXPLANATORY NOTES

### Introduction

This publication contains estimates of the civilian labour force derived from the labour force survey component of the monthly population survey, which is conducted on a sample basis throughout Australia.

### The population survey

2. This survey consists of the labour force survey (LFS) and, in most months, one or more supplementary topics. The survey is based on a multi-stage area sample of private dwellings (houses, flats, etc.) and non-private dwellings (hotels, motels, etc.) and covers slightly less than one-half of one per cent of the population of New South Wales. The information is obtained from the occupants of selected dwellings by carefully chosen and specially trained interviewers. The interviews are generally conducted during the two weeks beginning on the Monday between the 6th and 12th of each month. The information obtained relates to the week before the interview (i.e. the reference week).

### Scope

3. The labour force survey includes all persons aged 15 years and over, except:

- (a) members of the permanent defence forces;
- (b) certain diplomatic personnel of overseas governments, customarily excluded from census and estimated populations;
- (c) overseas residents in Australia; and
- (d) members of non-Australian defence forces (and their dependants) stationed in Australia.

### Survey sample redesign

4. Following each Population Census, the ABS redesigns and reselects the LFS to take into account the new information which is obtained from the Census. The sample used in the LFS from September 1987 to August 1992, which was designed and selected using data from the 1986 Census, has been updated and reselected using information collected in the 1991 Census. The new sample was phased in over the period September 1992 to December 1992.

5. For the most part, one quarter of the new sample was introduced each month so that, by December 1992, the entire new sample was in place.

### Potential effects on labour force survey estimates

6. Implications for estimates produced from the LFS due to sample redesign and its implementation are as follows.

- (a) The sampling error overall increased initially by about seven per cent over the previous level but will decline gradually during the life of the new sample. For State estimates, the initial increase was about 8 per cent, while for the Territories,

there was a decrease of 19 per cent. There were also higher standard errors for movements produced over the period September 1992 to December 1992 compared with those for the corresponding series produced prior to this period and from January 1993 onwards. Overall, these were estimated to be up to 20 per cent higher than the normal standard errors on monthly movements.

- (b) Analysis has shown that the unemployment rate is marginally higher (less than 0.5 percentage points on average) for those persons in sample for the first time. Normally, this will not affect the overall estimates of month-to-month movements because the number of persons in the sample does not change significantly. However, during the transition period, there were twice as many people as usual in the sample for the first time. This may have caused a small upward movement (of less than 0.1 percentage points on average) in the unemployment rate from August 1992 to September 1992 and a compensating decrease from December 1992 to January 1993.

7. For further information, see *Information Paper: Labour Force Survey Sample Design* (6269.0).

### Definitions

8. The labour force category to which a person is assigned depends on the actual activity undertaken during the reference week (i.e. whether working, looking for work, etc.). The following definitions, which conform closely to the international standard definitions specified by the International Labour Office (ILO), relate only to those persons within the scope of the survey.

9. *Employed persons* comprise all civilians aged 15 years and over who, during the reference week:

- (a) worked for one hour or more for pay, profit, commission or payment in kind (including employees, employers and self-employed persons) in a job or business, or on a farm; or
- (b) worked for one hour or more without pay in a family business or on a farm (i.e. unpaid family helpers); or
- (c) were employees who had a job but were not at work and were: on paid leave; on leave without pay for less than four weeks up to the end of the reference week; stood down without pay because of bad weather or plant breakdown at their place of employment for less than four weeks up to the end of the reference week; on strike or locked out; on workers' compensation and expected to be returning to their job; or receiving wages or salary while undertaking full-time study; or

- (d) were employers, self-employed persons or unpaid family helpers who had a job, business or farm, but were not at work.
10. Prior to April 1986, unpaid family helpers who worked for 1 to 14 hours were excluded from the category of employed persons.
11. Employed persons can be classified into:
- (a) *full-time workers* (i.e. those who usually worked 35 hours or more a week (in all jobs) and others who, although usually part-time workers, worked 35 hours or more during the reference week); and
  - (b) *part-time workers* (i.e. those who usually worked less than 35 hours a week and who did so during the reference week).
12. *Unemployed persons* are all those aged 15 years and over who were not employed during the reference week, and:
- (a) had actively looked for full-time or part-time work at any time in the four weeks up to the end of the reference week, and:
    - (i) were available for work in the reference week, or would have been available except for temporary illness (i.e. lasting for less than four weeks to the end of the reference week); or
    - (ii) were waiting to start a new job within four weeks from the end of the reference week and would have started in the reference week if the job had been available then; or
  - (b) were waiting to be called back to a full-time or part-time job from which they had been stood down without pay for less than four weeks up to the end of the reference week (including the whole of the reference week) for reasons other than bad weather or plant breakdown.
13. *Actively looking for work* includes writing, telephoning or applying in person to an employer for work; answering a newspaper advertisement for a job; checking factory or Commonwealth Employment Service notice-boards; being registered with the Commonwealth Employment Service; checking or registering with any other employment agency; advertising or tendering for work; and contacting friends or relatives.
14. *The unemployment rate* for any group is the number unemployed expressed as a percentage of the labour force (i.e. employed plus unemployed) in the same group.
15. *The labour force* comprises all persons who, during the reference week, were employed or unemployed as defined above.
16. *Long term unemployed* comprises persons unemployed for a period of 52 weeks or more.
17. *Persons not in the labour force* are those who, during the reference week, were not in the categories *employed* or *unemployed* as defined above.
18. *The labour force participation rate* for any group is the labour force expressed as a percentage of the civilian population aged 15 years and over in the same group.
19. *Duration of unemployment* is the period from the time the person began looking for work or was stood down to the end of the reference week.
20. *Unemployed persons classified by industry and occupation*. Unemployed persons who had worked full-time for two weeks or more in the last two years are classified according to the industry and occupation of their most recent full-time job.
21. *Industry classification*. The classification of industry is in accordance with the Australian Standard Industrial Classification (ASIC) described in *Australian Standard Industrial Classification, Vol. 1 — The Classification* (1201.0)
22. *Occupation classification*. Occupation data are presented in accordance with the *Australian Standard Classification of Occupations (ASCO)* (1221.0 and 1222.0).
23. *Marital status*. In the labour force survey, persons are classified as *married* or *not married*. Persons are classified as *married* if they are reported as being married (including de facto) and their spouse was a usual resident of the household at the time of the survey
24. *Persons attending school or a tertiary educational institution*. Persons attending school comprise those aged 15–19 years who, during the reference week, were enrolled full-time at secondary or high schools (including boarding school pupils). Persons attending a tertiary educational institution comprise those aged 15–24 years who were enrolled full-time at universities, colleges of advanced education, technical colleges, colleges of technical and further education, and theological colleges.
25. *Employment/population ratio*. For any group, the number of employed persons expressed as a percentage of the civilian population aged 15 years and over in the same group.

#### Statistical areas

26. The regional structure for NSW used in tables 16 to 21 is based on the Statistical Region structure of the Australian Standard Geographical Classification (ASGC). For further information concerning statistical areas, please refer to pages 50–52 and the publications *Regional Statistics, New South Wales* (1304.1) and *Australian Standard Geographical Classification* (1216.0).

#### Seasonal adjustment and trend estimation

27. Seasonal adjustment is a means of removing the estimated effects of normal seasonal variation from the series so that the effects of other influences on the series

can be more clearly recognised. Seasonal adjustment does not aim to remove the irregular or non-seasonal influences which may be present in any particular month. This means that month-to-month movements of the seasonally adjusted estimates may not be reliable indicators of trend behaviour. For example, irregular factors unrelated to the trend account for more than half the seasonally adjusted movement with the following frequency:

- (a) Employment: 5 in 10 monthly movements
- (b) Unemployment: 7 in 10 monthly movements
- (c) Unemployment rate: 7 in 10 monthly movements
- (d) Participation rate: 9 in 10 monthly movements

28. Smoothing seasonally adjusted series produces a measure of the underlying trend by reducing the impact of the irregular component of the series. The trend estimates are derived by applying a 13-term Henderson-weighted moving average to the respective seasonally adjusted series. While this smoothing technique enables estimates to be produced which include the latest month, it does result in revisions to the most recent months as additional observations become available.

29. Seasonally adjusted series for NSW appear in this publication in Table 2. Trend estimates for NSW and ACT appear in Tables 2 and 22 respectively. Seasonally adjusted data is not available for ACT.

#### Reliability of the estimates

30. Estimates in this publication are subject to sampling and non-sampling errors. The Technical Note on pages 45-49 of this publication gives information on these sources of error.

#### Related publications

31. Users may also wish to refer to the following related publications which are available from the ABS Bookshop:

*Regional Statistics, New South Wales* (1304.1) issued annually

*Australian Capital Territory Business Indicators* (1303.8) issued monthly

*Australian Capital Territory Statistical Summary* (1307.8) issued annually

*Australian Capital Territory at a Glance* (1314.8) issued annually

*A Guide to Smoothing Time Series — Estimates of 'Trend'* (1316.0)

*Time Series Decomposition — An Overview* (1317.0)

*Labour Statistics, Australia* (6101.0) issued annually

*A Guide to Labour Statistics* (6102.0)

*The Labour Force, Australia, Preliminary* (6202.0) issued monthly

*The Labour Force, Australia* (6203.0) issued monthly

*Employed Wage and Salary Earners, Australia* (6248.0) issued quarterly

*Information Paper: Labour Force Survey — Sample Design* (6269.0)

*Information Paper: Labour Force Survey — Measuring Teenage Unemployment* (6270.0)

*Technical Paper: The Labour Force, Australia: Preliminary Data on Floppy Disk — Technical Details* (6271.0)

#### Additional data

32. In addition to the labour force survey, the ABS publishes a wide range of supplementary labour market information. For details see page 41 of this publication.

33. The ABS can also make available information which is not published. This information may be made available in one or more of the following forms: microfiche, photocopy, data tape, floppy disk, computer printout, clerically-extracted tabulation. In general, a charge is made for providing unpublished information.

#### Symbols and other usages

A	Area
C	City
MSR	Major Statistical Region
n.e.c.	not elsewhere classified
SD	Statistical Division
SR	Statistical Region
SRS	Statistical Region Sector
*	subject to sampling variability too high for most practical purposes. See paragraph 6 of the Technical Note on Data Reliability.
—	nil or rounded to zero (including null cells)

34. Figures have been rounded and discrepancies may occur between sums of the component items and the totals shown.

## TECHNICAL NOTE ON DATA RELIABILITY

### Sources of error

There are a number of possible sources of error in sample surveys and these can be classified into two types: *sampling error*; and *non-sampling error*.

### Non-sampling errors

2. Non-sampling errors may arise as a result of errors in the reporting, recording or processing of the data and can occur even if there is a complete enumeration of the population. Non-sampling errors can be introduced through: inadequacies in the questionnaire; non-response; inaccurate reporting by respondents; errors in the application of survey procedures; incorrect recording of answers; and errors in data entry and processing.

3. It is difficult to measure the size of the non-sampling errors and the extent of these errors could vary considerably in significance from survey to survey, and from question to question. However, every effort is made in the design of the survey and development of survey procedures to minimise the effect of these errors.

### Sampling errors

4. Sampling error is the error which occurs by chance because the data were only obtained from a sample, not the entire population.

### Standard error of estimates

5. One measure of the variability of estimates which occurs as a result of surveying only a sample of the population is the *standard error* (SE). There are about two chances in three that a survey estimate is within one standard error of the figure that would have been obtained if all persons had been included and about nineteen chances in twenty that it is within two standard errors. That is, there are 19 chances in 20 that the true estimate is in the range—

$$X - 2 \times SE(X) \text{ to } X + 2 \times SE(X)$$

(Where  $X$  is the estimate)

The standard error of an estimate can be obtained from Table A. Linear interpolation should be used to calculate the standard error of estimates falling between the sizes of estimates listed in the table (see example below Table A).

6. In the tables in this publication, only estimates with relative standard errors of 25 per cent or less, and percentages based on such estimates, are considered sufficiently reliable for most purposes. However, estimates and percentages with larger relative standard errors have been included and are preceded by an asterisk (e.g. \* 3.4) to indicate they are subject to high standard errors and should be used with caution.

### Relative standard errors

7. The standard error can also be expressed as a percentage of the estimate and this is known as the *relative standard error* (RSE). The RSE is determined by dividing the standard error of an estimate  $SE(X)$  by the estimate  $X$  and expressing it as a percentage. That is,

$$RSE(X) = \frac{SE(X) \times 100}{X}$$

(where  $X$  is the estimate)

8. The look up list on the following page provides a guide for the calculation of standard errors and relative standard errors for a range of statistics.

## METHODS FOR CALCULATING THE STANDARD ERRORS FOR SELECTED ESTIMATES

*Note: The methods described below refer to the calculation of standard errors for NSW estimates. Standard errors of ACT estimates should be calculated from Table C, using column 2 (from September 1992) instead of Table A and column 3 (Monthly movements for December 1992–January 1993 onwards) instead of Table B.*

<i>Measure of reliability to be determined</i>	<i>Method</i>
Standard errors of estimates of employed persons.	Determine the SE from Table A directly.
Standard errors of estimates of unemployed persons.	Multiply the SE from Table A by 1.06.
Standard errors of estimates of persons not in the labour force.	Multiply the SE from Table A by 1.1.
Standard errors of rates (e.g. the unemployment rate which is based on the number of unemployed persons expressed as a percentage of the number of persons in the labour force).	Determine the RSE of the numerator (X) and the denominator (Y) then apply the following formula.  $RSE(X/Y) = \sqrt{[RSE(X)]^2 - [RSE(Y)]^2}$
Standard error of average duration of unemployment.	Determine the RSE for the number of persons on which the average is based and multiply this by 1.3.
Standard error of median duration of unemployment.	Determine the RSE for the number of persons on which the average is based and multiply this by 2.0.
Standard error of monthly movements.	Using Table B, look up the SE of the larger estimate.
Standard error of quarterly movements.	Determine the standard error of the larger estimate (using Table A) and multiply this by 1.11.
Standard error of annual movements.	Determine the standard error of the larger estimate (using Table A) and multiply this by 1.3.

### Linear interpolation –

Linear interpolation is used to determine the standard error of an estimate which falls between two values listed in the *size of estimate* column in Tables A or B. Linear interpolation is best described using an example. In May 1994, there were 610,700 ( $X_e$ ) employed persons working part-time in New South Wales. This estimate falls between the values 500,000 ( $X_l$ ) and 1,000,000 ( $X_u$ ) in Table A.

2. The standard error of the estimate is determined as follows.

$$\begin{aligned} \text{Firstly, calculate } F &= \frac{X_e - X_l}{X_u - X_l} \\ &= \frac{610,700 - 500,000}{1,000,000 - 500,000} \\ &= 0.22 \end{aligned}$$

3. Secondly, calculate the standard error of the estimate,  $SE(X_e)$  thus,

$$\begin{aligned} SE(X_e) &= SE(X_l) + (F \times [SE(X_u) - SE(X_l)]) \\ &= 8,800 + (0.22 \times [11,300 - 8,800]) \\ &= 9,350 \end{aligned}$$

4. Therefore the standard error of the number of employed persons in May 1994 working part-time in New South Wales (610,700) is 9,350.

TABLE A. STANDARD ERRORS OF ESTIMATES, REGIONS OF NSW FROM SEPTEMBER 1992 (a)

Size of estimate	Regions in Sydney (MSR)							
	NSW; Sydney (MSR); Balance of NSW (MSR)	Inner Sydney and Inner Western Sydney (SRs)	Inner Sydney (SR)	Eastern Suburbs (SR)	St George-Sutherland (SR)	Canterbury-Bankstown (SR)	South Western Sydney (SRs)	Fairfield-Liverpool and Outer Fairfield-Liverpool (SR)
500	420	340	330	300	300	280	330	290
1,000	590	500	480	430	430	410	470	410
3,000	1,000	890	860	770	780	740	850	750
5,000	1,300	1,150	1,150	1,000	1,050	970	1,100	980
10,000	1,750	1,700	1,650	1,500	1,500	1,400	1,650	1,450
20,000	2,400	2,450	2,450	2,200	2,200	2,100	2,350	2,100
50,000	3,550	4,050	4,050	3,650	3,700	3,500	3,850	3,500
100,000	4,750	5,900	6,000	5,400	5,500	5,200	5,600	5,200
200,000	6,200	8,600	8,900	8,000	8,100	7,700	8,200	7,700
300,000	7,300	10,700	11,300	10,100	10,200	9,700	10,200	9,800
500,000	8,800	14,200	15,200	13,600	13,800	13,000	13,500	13,100
1,000,000	11,300							
2,000,000	14,300							
5,000,000	19,300							

Size of estimate	Regions in Sydney (MSR)—continued						
	Central Western Sydney (SR)	Outer Western Sydney (SR)	Blacktown-Baulkham Hills (SR)	Lower Northern Sydney (SR)	Hornsby-Ku-ring-gai (SR)	Northern Beaches (SR)	Gosford-Wyong (SR)
500	300	310	270	360	320	250	330
1,000	440	450	390	520	460	360	470
3,000	790	820	700	940	830	650	850
5,000	1,050	1,100	920	1,250	1,100	860	1,150
10,000	1,500	1,550	1,350	1,800	1,600	1,250	1,650
20,000	2,250	2,300	1,950	2,650	2,350	1,850	2,400
50,000	3,750	3,850	3,300	4,450	3,900	3,100	4,050
100,000	5,500	5,700	4,850	6,500	5,800	4,550	6,000
200,000	8,200	8,500	7,200	9,700	8,600	6,800	8,900
300,000	10,300	10,700	9,100	12,300	10,900	8,500	11,200

Size of estimate	Regions in Balance of NSW (MSR)							
	Hunter (SR)	Newcastle (SRS)	Illawarra and South Eastern (SRs)	Illawarra (SR)	Wollongong (SRS)	Richmond-Tweed and Mid-North Coast (SRs)	Northern, Far West-North Western and Central West (SRs)	Murray-Murrumbidgee (SR)
500	350	330	330	310	270	370	360	360
1,000	500	480	480	450	390	530	520	520
3,000	900	870	870	810	710	950	940	940
5,000	1,200	1,150	1,150	1,050	940	1,250	1,250	1,250
10,000	1,700	1,650	1,650	1,550	1,350	1,850	1,800	1,800
20,000	2,500	2,450	2,400	2,250	2,000	2,700	2,650	2,650
50,000	4,100	4,100	3,950	3,700	3,350	4,500	4,450	4,400
100,000	6,000	6,000	5,700	5,400	4,950	6,600	6,600	6,500
200,000	8,700	9,000	8,400	7,800	7,300	9,900	9,800	9,700
300,000	10,900	11,300	10,400	9,800	9,300	12,400	12,300	12,300

(a) For standard errors for earlier periods, see previous issues of this publication.

TABLE B. STANDARD ERRORS OF MONTH TO MONTH MOVEMENTS, REGIONS OF NSW  
FROM DECEMBER 1992–JANUARY 1993 ONWARDS (a)

Size of estimate	Regions in Sydney (MSR)							
	NSW; Sydney (MSR); Balance of NSW (MSR)	Inner Sydney and Inner Western Sydney (SRs)	Inner Sydney (SR)	Eastern Suburbs (SR)	St George–Sutherland (SR)	Canterbury–Bankstown (SR)	Fairfield–Liverpool and Outer South Western Sydney (SRs)	Fairfield–Liverpool (SR)
500	540	330	270	260	240	240	290	220
1,000	690	440	360	350	330	330	390	300
3,000	1,050	700	600	580	540	540	630	500
5,000	1,250	870	750	730	680	680	780	630
10,000	1,600	1,150	1,050	990	930	930	1,050	860
20,000	2,050	1,550	1,400	1,350	1,250	1,250	1,400	1,150
50,000	2,900	2,300	2,150	2,050	1,950	1,900	2,050	1,750
100,000	3,700	3,100	2,900	2,800	2,650	2,650	2,800	2,400
200,000	4,750	4,200	4,000	3,850	3,600	3,600	3,750	3,300
300,000	5,500	5,000	4,800	4,600	4,350	4,300	4,400	4,400
500,000	6,700	6,200	6,000	5,800	5,400	5,400	5,500	5,000
1,000,000	8,600							
2,000,000	11,100							
5,000,000	15,500							

Size of estimate	Regions in Sydney (MSR)—continued						
	Central Western Sydney (SR)	Outer Western Sydney (SR)	Blacktown–Baulkham Hills (SR)	Lower Northern Sydney (SR)	Hornsby–Ku-ring-gai (SR)	Northern Beaches (SR)	Gosford–Wyong (SR)
500	220	240	250	290	230	210	270
1,000	300	330	340	400	310	280	380
3,000	490	540	560	660	510	470	620
5,000	610	680	700	830	640	590	780
10,000	840	940	960	1,150	870	800	1,050
20,000	1,150	1,300	1,300	1,550	1,200	1,100	1,450
50,000	1,750	1,950	2,000	2,350	1,800	1,650	2,200
100,000	2,350	2,650	2,700	3,200	2,450	2,250	3,000
200,000	3,250	3,600	3,700	4,400	3,400	3,100	4,100
300,000	3,900	4,350	4,450	5,300	4,050	3,750	4,950

Size of estimate	Regions in Balance of NSW (MSR)							
	Hunter (SR)	Newcastle (SRs)	Illawarra and South Eastern (SRs)	Illawarra (SR)	Wollongong (SRs)	Richmond–Tweed and Mid-North Coast (SRs)	Northern, Far West–North Western and Central West (SRs)	Murray–Murrumbidgee (SR)
500	320	280	340	340	260	300	340	290
1,000	430	390	460	460	350	420	470	400
3,000	690	640	740	730	580	680	760	660
5,000	860	800	910	910	730	860	960	830
10,000	1,150	1,100	1,250	1,200	990	1,200	1,300	1,150
20,000	1,550	1,500	1,650	1,650	1,350	1,600	1,800	1,550
50,000	2,300	2,250	2,450	2,400	2,050	2,450	2,750	2,350
100,000	3,100	3,100	3,250	3,250	2,800	3,350	3,750	3,200
200,000	4,150	4,250	4,400	4,350	3,850	4,550	5,100	4,350
300,000	4,900	5,100	5,200	5,200	4,600	5,500	6,100	5,200

(a) For standard errors for earlier periods, see previous issues of this publication.



TABLE C. STANDARD ERRORS OF ESTIMATES, ACT

Size of estimate	Monthly movements for	
	From September 1992 (a)	December 1992– January 1993 onwards (a)
500	180	150
1,000	240	220
3,000	390	320
5,000	490	390
10,000	640	500
20,000	840	640
50,000	1,200	900
100,000	1,550	1,150
200,000	1,950	1,500
300,000	2,250	1,750

(a) For standard errors for earlier periods, see *The Labour Force, Australia* (6203.0)

## APPENDIX. REGIONS OF NSW AND THEIR STATISTICAL LOCAL AREAS

**SYDNEY (MSR)****Inner Sydney and Inner Western Sydney (SRs)**

Ashfield (A)  
 Botany (A)  
 Burwood (A)  
 Concord (A)  
 Drummoyne (A)  
 Leichhardt (A)  
 Marrickville (A)  
 South Sydney (C)  
 Strathfield (A)  
 Sydney (C) — Inner  
 Sydney (C) — Remainder

**Inner Sydney (SR)**

Botany (A)  
 Leichhardt (A)  
 Marrickville (A)  
 South Sydney (C)  
 Sydney (C) — Inner  
 Sydney (C) — Remainder

**Eastern Suburbs (SR)**

Randwick (C)  
 Waverley (A)  
 Woollahra (A)

**St George–Sutherland (SR)**

Hurstville (C)  
 Kogarah (A)  
 Rockdale (A)  
 Sutherland Shire (A)

**Canterbury–Bankstown (SR)**

Bankstown (C)  
 Canterbury (A)

**Eairfield–Liverpool and****Outer South Western Sydney (SRs)**

Camden (A)  
 Campbelltown (C)  
 Fairfield (C)  
 Liverpool (C)  
 Wollondilly (A)

**Fairfield–Liverpool (SR)**

Fairfield (C)  
 Liverpool (C)

**Central Western Sydney (SR)**

Auburn (A)  
 Holroyd (C)  
 Parramatta (C)

**Outer Western Sydney (SR)**

Blue Mountains (C)  
 Hawkesbury (C)  
 Penrith (C)

**Blacktown–Baulkham Hills (SR)**

Baulkham Hills (A)  
 Blacktown (C)

**Lower Northern Sydney (SR)**

Hunter's Hill (A)  
 Lane Cove (A)  
 Mosman (A)  
 North Sydney (A)  
 Ryde (C)  
 Willoughby (C)

**Hornsby–Ku-ring-gai (SR)**

Hornsby (A)  
 Ku-ring-gai (A)

**Northern Beaches (SR) (a)**

Manly (A)  
 Pittwater (A)  
 Warringah (A)

**Gosford–Wyong (SR)**

Gosford (C)  
 Wyong (A)

**BALANCE OF NSW (MSR) (b)****Hunter (SR)**

Cessnock (C)  
 Dungog (A)  
 Gloucester (A)  
 Great Lakes (A)  
 Lake Macquarie (C)  
 Maitland (C)  
 Merriwa (A)  
 Murrurundi (A)  
 Muswellbrook (A)  
 Newcastle (C) — Inner  
 Newcastle (C) — Remainder  
 Port Stephens (A)  
 Scone (A)  
 Singleton (A)

**Newcastle (SRS)**

Cessnock (C)  
 Lake Macquarie (C)  
 Maitland (C)  
 Newcastle (C) — Inner  
 Newcastle (C) — Remainder  
 Port Stephens (A)

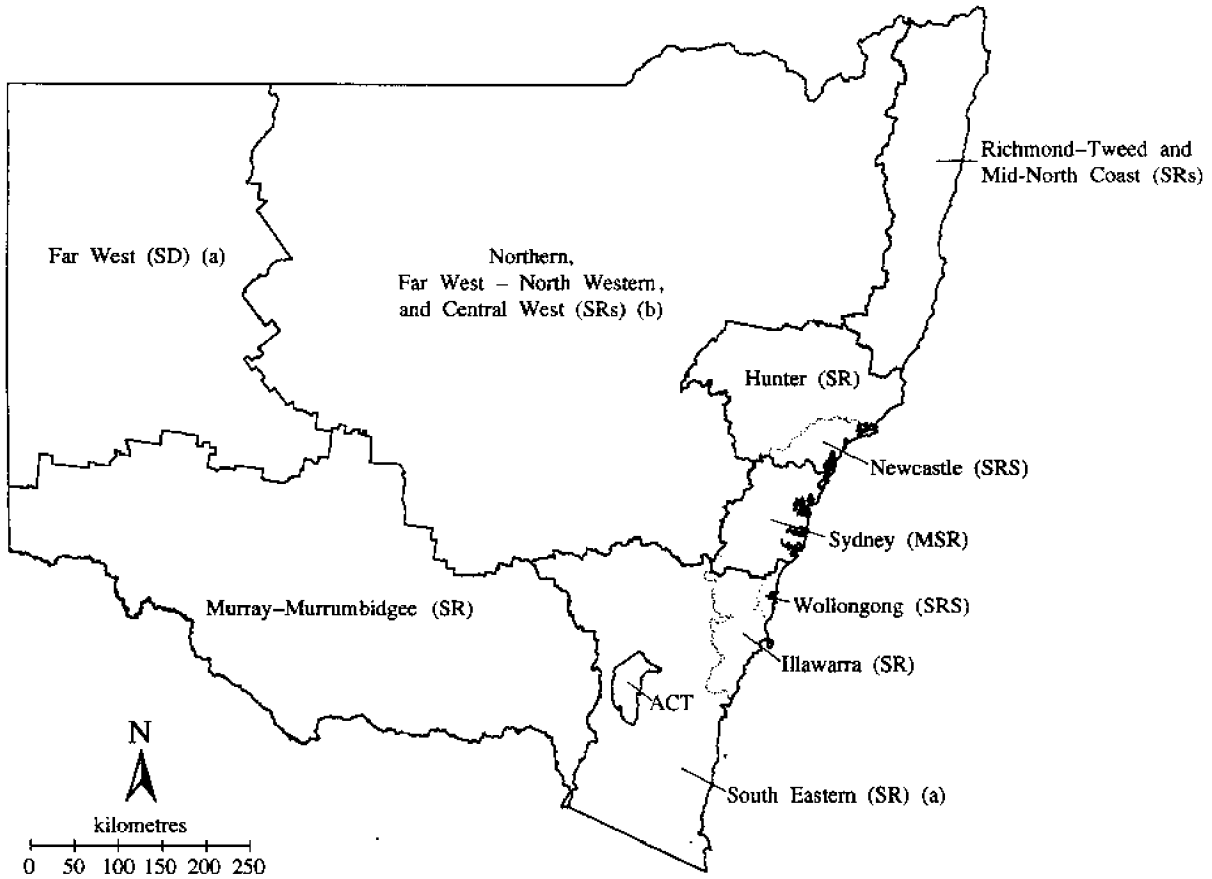
**Illawarra and South Eastern (SRs)**

Bega Valley (A)  
 Bombala (A)  
 Boorowa (A)  
 Cooma–Monaro (A)  
 Crookwell (A)  
 Eurobodalla (A)  
 Goulburn (C)  
 Gunning (A)  
 Harden (A)  
 Kiama (A)  
 Mulwaree (A)  
 Queanbeyan (C)  
 Shellharbour (A)  
 Shoalhaven (C)  
 Snowy River (A)  
 Tallaganda (A)  
 Wingecarribee (A)

- Wollongong (C)  
Yarrowlumla (A)  
Yass (A)  
Young (A)
- Illawarra (SR)**  
Kiama (A)  
Shellharbour (A)  
Shoalhaven (C)  
Wingecarribee (A)  
Wollongong (C)
- Wollongong (SRS)**  
Kiama (A)  
Shellharbour (A)  
Wollongong (C)
- Richmond-Tweed and Mid-North Coast (SRs)**  
Ballina (A)  
Bellingen (A)  
Byron (A)  
Casino (A)  
Coffs Harbour (C)  
Copmanhurst (A)  
Grafton (C)  
Greater Taree (C)  
Hastings (A)  
Kempsey (A)  
Kyogle (A)  
Lismore (C)  
Lord Howe Island  
Maclean (A)  
Nambucca (A)  
Nymboida (A)  
Richmond River (A)  
Tweed (A) — Part A  
Tweed (A) — Part B  
Ulmarra (A)
- Northern, Far West-North Western and Central West (SRs) (b)**  
Armidale (C)  
Barraba (A)  
Bathurst (C)  
Bingara (A)  
Bland (A)  
Blayney (A) — Part A  
Blayney (A) — Part B  
Bogan (A)  
Bourke (A)  
Brewarrina (A)  
Cabonne (A) — Part A  
Cabonne (A) — Part B  
Cabonne (A) — Part C  
Cobar (A)  
Coolah (A)  
Coonabarabran (A)  
Coonamble (A)  
Cowra (A)  
Dubbo (C)  
Dumaresq (A)  
Evans (A) — Part A  
Evans (A) — Part B
- Forbes (A)  
Gilgandra (A)  
Glen Innes (A)  
Greater Lithgow (C)  
Gunnedah (A)  
Guyra (A)  
Inverell (A) — Part A  
Inverell (A) — Part B  
Lachlan (A)  
Manilla (A)  
Moree Plains (A)  
Mudgee (A)  
Narrabri (A)  
Narromine (A)  
Nundle (A)  
Oberon (A)  
Orange (C)  
Parkes (A)  
Parry (A)  
Quirindi (A)  
Rylstone (A)  
Severn (A)  
Tamworth (C)  
Tenterfield (A)  
Uralla (A)  
Walcha (A)  
Walgett (A)  
Warren (A)  
Weddin (A)  
Wellington (A)  
Yallaroi (A)
- Murray-Murrumbidgee (SR)**  
Albury (C)  
Balranald (A)  
Berrigan (A)  
Carrathool (A)  
Conargo (A)  
Coolamon (A)  
Cootamundra (A)  
Corowa (A)  
Culcairn (A)  
Deniliquin (A)  
Griffith (C)  
Gundagai (A)  
Hay (A)  
Holbrook (A)  
Hume (A)  
Jerilderie (A)  
Jonee (A)  
Leeton (A)  
Lockhart (A)  
Murray (A)  
Murrumbidgee (A)  
Narrandera (A)  
Temora (A)  
Tumbarumba (A)  
Tumut (A)  
Urana (A)  
Wagga Wagga (C)  
Wakool (A)  
Wentworth (A)  
Windouran (A)

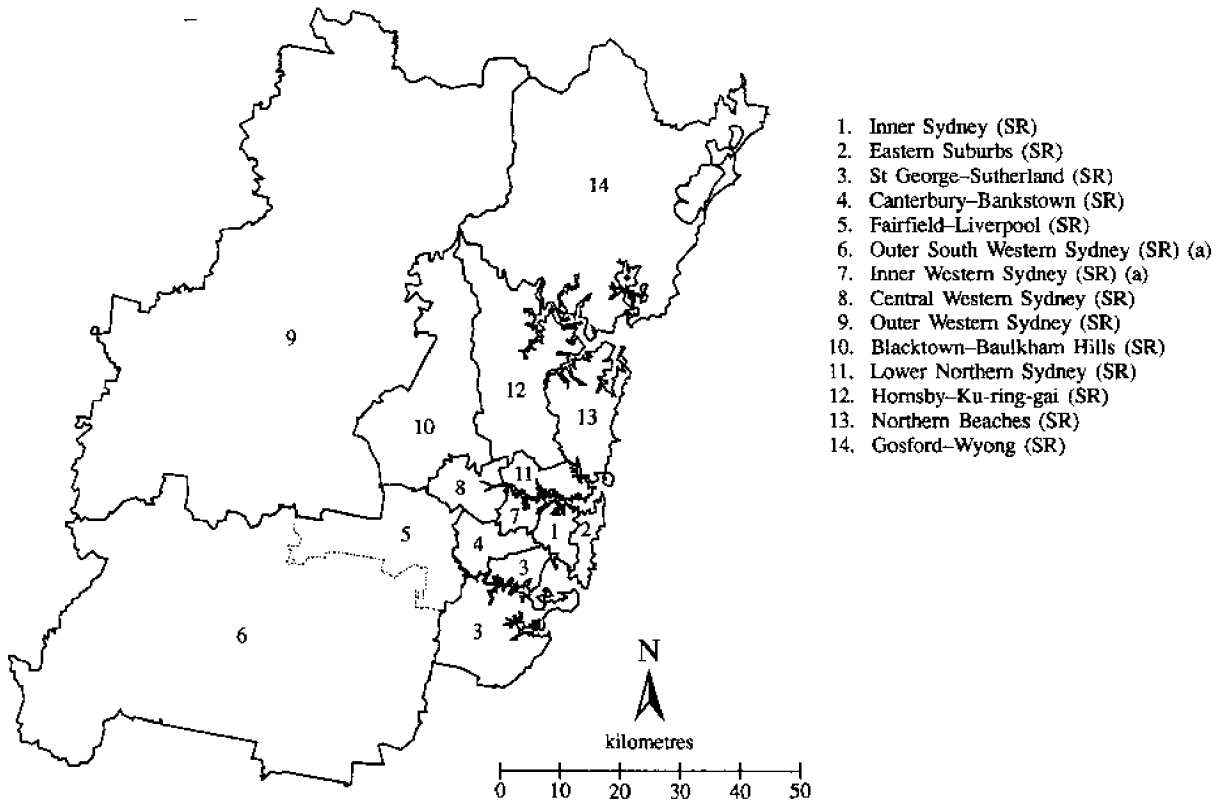
(a) Previously Manly-Warringah (SR). (b) The statistical local areas which comprise Far West (SD)—Broken Hill (C), Central Darling (A), and Unincorporated Far West—are included in Balance of NSW (MSR), but excluded from Northern, Far West-North Western and Central West (SRs).

REGIONS OF NSW



(a) Not published separately. (b) Excludes Far West (SD).

REGIONS OF SYDNEY (MSR)



(a) Not published separately.





## For more information ...

The ABS publishes a wide range of statistics and other information on Australia's economic and social conditions. Details of what is available in various publications and other products can be found in the *ABS Catalogue of Publications and Products* available at all ABS Offices (see below for contact details).

### Information Consultancy Service

Information tailored to special needs of clients can be obtained from the Information Consultancy Service available at ABS Offices (see Information Inquiries below for contact details).

### National Dial-a-Statistic Line

0055 86 400

This number gives you 24 hour access, 365 days a year for a range of statistics.

### Electronic Data Services

A wide range of ABS data are available on electronic media. The ABS PC TELESTATS service delivers major economic indicator main features ready to download into personal computers on the day of release. The PC AUSSTATS service enables on-line access to a data base of thousands of up-to-date time series. Selected datasets are also available on diskette or CD-ROM. For more details on electronic data services available, contact Information Services in any of the ABS Offices (see Information Inquiries below for contact details).

### Bookshops and Subscriptions

There are over 500 titles of various publications available from ABS bookshops in all ABS Offices (see below Bookshop Sales for contact details). The ABS also provides a subscription service through which nominated publications are provided by mail on a regular basis at no additional cost (telephone Publications Subscription Service toll free on 008 02 0608 Australia wide).

## Sales and Inquiries

Regional Offices	Information Inquiries	Bookshop Sales
SYDNEY	(02) 268 4611	(02) 268 4620
MELBOURNE	(03) 615 7000	(03) 615 7829
BRISBANE	(07) 222 6351	(07) 222 6350
PERTH	(09) 360 5140	(09) 360 5307
ADELAIDE	(08) 237 7100	(08) 237 7582
HOBART	(002) 205 800	(002) 205 800
CANBERRA	(06) 207 0326	(06) 207 0326
DARWIN	(089) 432 111	(089) 432 111
<b>National Office</b>		
ACT	(06) 252 6007	(06) 008 020 608



Information Services, ABS, GPO Box 796, Sydney NSW 2001  
or any ABS office



2620110005948  
ISSN 1322-0179